

# Anti-Squalene Epoxidase Rabbit Polyclonal Antibody



**Catalog #: 52623**

## Aliases

SQLE; Squalene Epoxidase; Squalene Monooxygenase; SE; EC 1.14.14.17; ERG1

## Background

Gene Name: SQLE

NCBI Gene Entry: [6713](#)

UniProt Entry: [Q14534](#)

## Application Information

Molecular Weight: Predicted, 64 kDa; observed, 64 kDa

Clonality: Rabbit polyclonal antibody

Species Reactivity: Human, rat

Applications Tested: Western blotting (WB), immunohistochemistry (IHC), immunocytochemistry (IC)

## Immunogen

A synthesized peptide derived from human Squalene Epoxidase

## Isotype

Rabbit IgG

## Storage Buffer

Supplied in TBS (pH 7.4) containing 50% glycerol, 1% BSA and 0.02% Proclin 300.

## Storage

Store at -20 °C for one year.

## Recommended Dilutions

Western Blotting (WB): 1:500-1:2,000

Immunohistochemistry(IHC): 1:100-1:500

Immunocytochemistry (IC): 1:100-1:500

**Note:** This product is for research use only.

## Validation Data

---

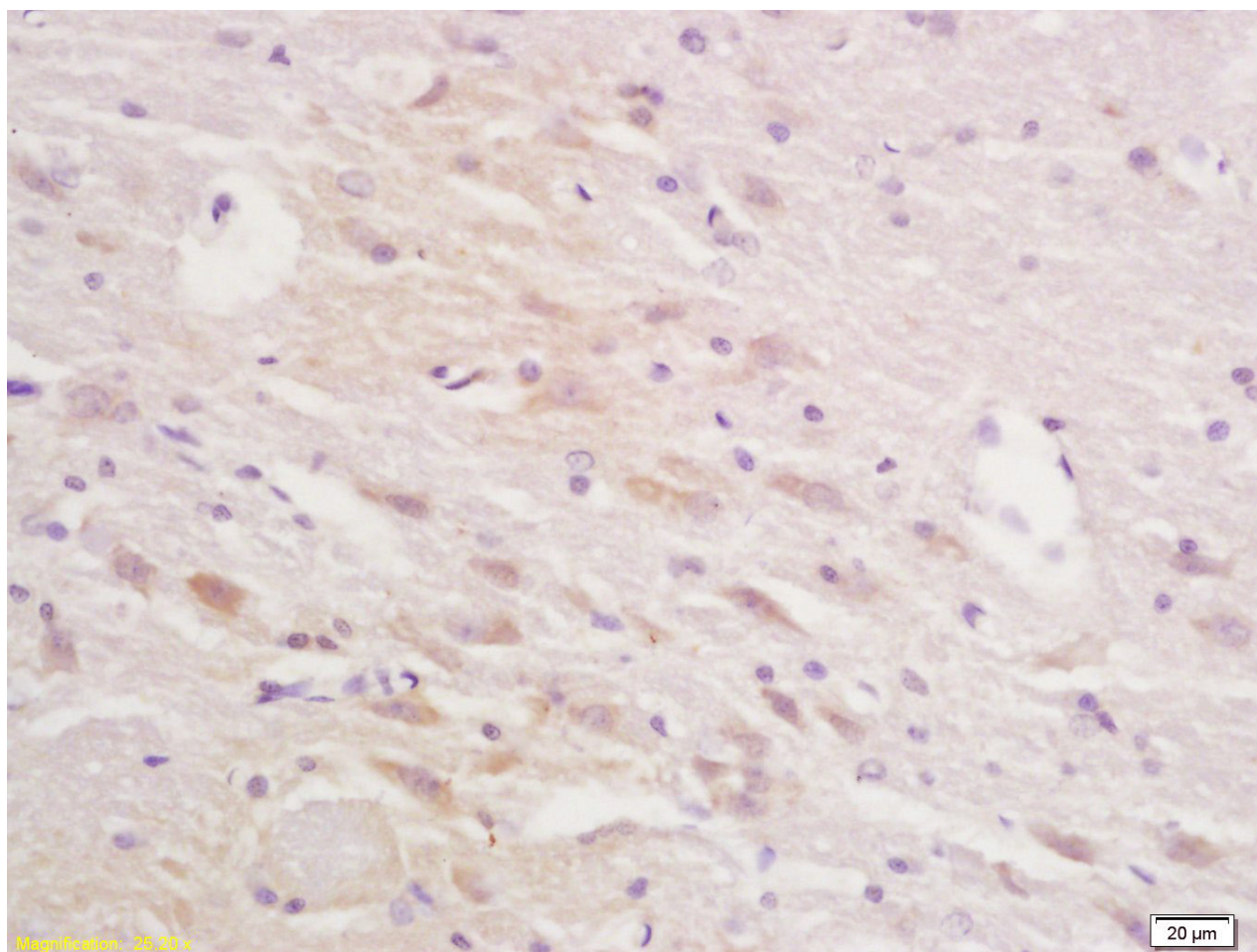
### SUPPORT

SUPPORT@GENUINBIOTECH.COM  
TEL: +1-540-855-7041

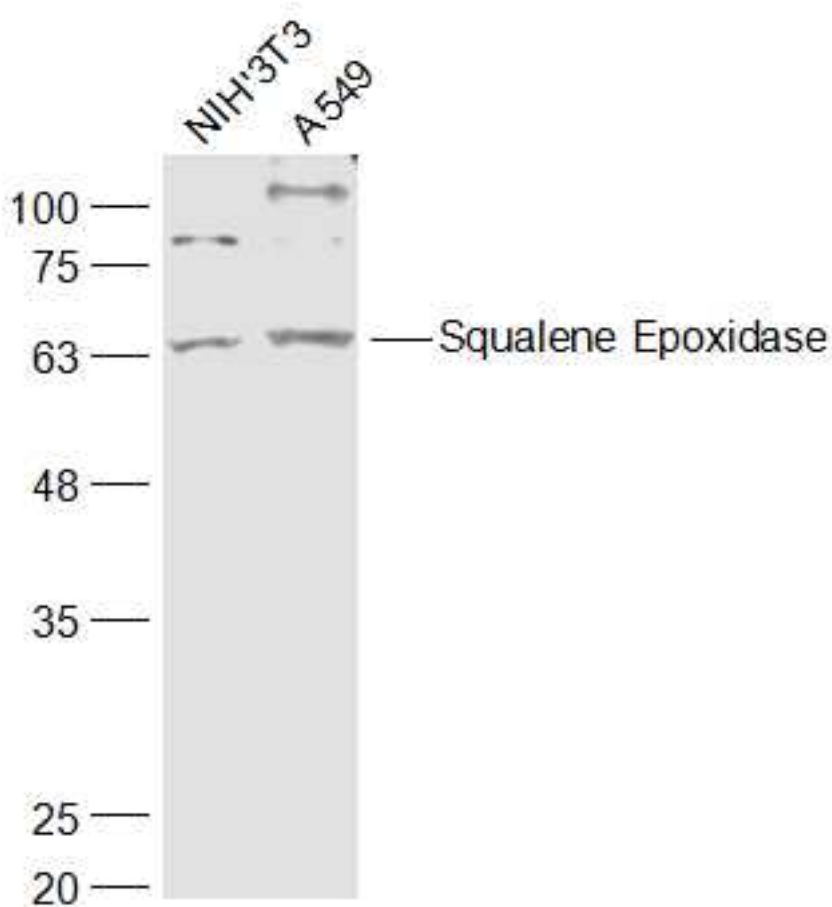
### ORDERS

SALES@GENUINBIOTECH.COM  
FAX: +1-540-855-7041

[WWW.GENUINBIOTECH.COM](http://WWW.GENUINBIOTECH.COM)



Immunohistochemical analysis of paraffin-embedded rat brain tissue. Antibody was diluted at 1:200 (4°C overnight). Citrate buffer, pH6.0 was used for antigen retrieval. Secondary antibody was diluted at 1:200 and DAB staining.



Western blotting analysis using anti-Squalene Epoxidase antibody (Cat#52623). Total cell lysates (30  $\mu$ g) from various cell lines were loaded and separated by SDS-PAGE. The blot was incubated with anti-Squalene Epoxidase antibody (Cat#52623, 1:1,000) and IRDye800CW-conjugated goat anti-rabbit secondary antibody (1:20,000) respectively.