

Catalog #: 52626

Aliases

MAP2K6; Mitogen-Activated Protein Kinase Kinase 6; SAPKK3; MEK6; MKK6; MAPKK6; PRKMK6; Protein Kinase, Mitogen-Activated, Kinase 6 (MAP Kinase Kinase 6); Dual Specificity Mitogen-Activated Protein Kinase Kinase 6; Stress-Activated Protein Kinase Kinase 3; MAPK/ERK Kinase 6; SAPK Kinase 3; EC 2.7.12.2; SAPKK-3; MAPKK 6; MEK 6; MAP Kinase Kinase 6; SKK3

Background

Gene Name: MAP2K6

NCBI Gene Entry: [5608](#)

UniProt Entry: [P52564](#)

Application Information

Molecular Weight: Predicted, 37 kDa; observed, 37 kDa

Clonality: Rabbit polyclonal antibody

Species Reactivity: Human, mouse, rat

Applications Tested: Western blotting (WB), immunohistochemistry (IHC), immunocytochemistry (IC)

Immunogen

A synthesized peptide derived from human MAP2K6

Isotype

Rabbit IgG

Storage Buffer

Supplied in PBS containing 50% glycerol, 0.5% BSA and 0.02% sodium azide.

Storage

Store at -20 °C for one year.

Recommended Dilutions

Western Blotting (WB): 1:500-1:2,000

Immunohistochemistry(IHC): 1:100-1:300

Immunocytochemistry (IC): 1:200-1:1,000

SUPPORT

SUPPORT@GENUINBIOTECH.COM
TEL: +1-540-855-7041

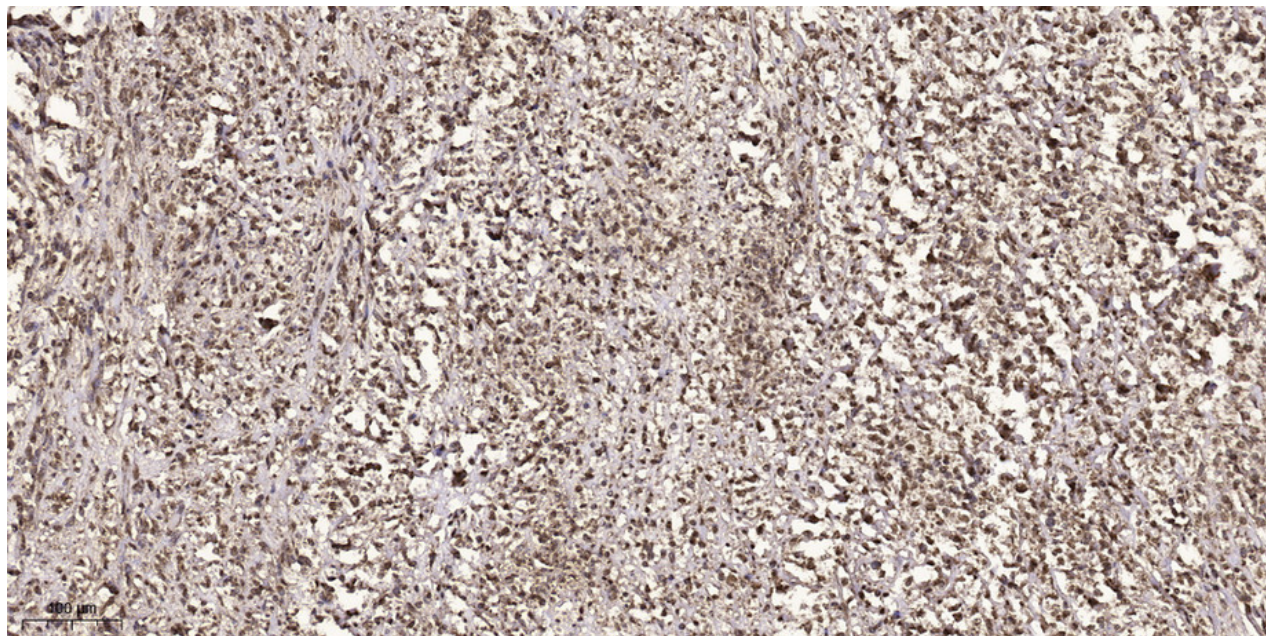
ORDERS

SALES@GENUINBIOTECH.COM
FAX: +1-540-855-7041

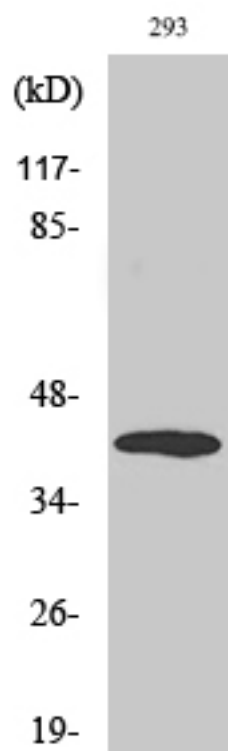
WWW.GENUINBIOTECH.COM

Note: This product is for research use only.

Validation Data



Immunohistochemical analysis of paraffin-embedded human small intestinal carcinoma tissue. Primary antibody was diluted at 1:200 (4°C overnight). Sodium citrate pH 6.0 was used for antigen retrieval (>98°C, 20min). Secondary antibody was diluted at 1:200.



SUPPORT

SUPPORT@GENUINBIOTECH.COM
TEL: +1-540-855-7041

ORDERS

SALES@GENUINBIOTECH.COM
FAX: +1-540-855-7041

WWW.GENUINBIOTECH.COM

Western blotting analysis using anti-MAP2K6 antibody (Cat#52626). Total cell lysates (30 µg) from various cell lines were loaded and separated by SDS-PAGE.