

Catalog #: 52629

Aliases

TFCP2L1; Transcription Factor CP2 Like 1; CRTR1; LBP-9; Transcription Factor CP2-Like Protein 1; CP2-Related Transcriptional Repressor 1; Transcription Factor LBP-9; CRTR-1; LBP9; Transcription Factor CP2-Like 1

Background

Gene Name: TFCP2L1

NCBI Gene Entry: [29842](#)

UniProt Entry: [Q9NZI6](#)

Application Information

Molecular Weight: Predicted, 55 kDa; observed, 55 kDa

Clonality: Rabbit polyclonal antibody

Species Reactivity: Human, mouse, rat

Applications Tested: Western blotting (WB), immunohistochemistry (IHC), immunocytochemistry (IC)

Immunogen

A synthesized peptide derived from human CRTR1

Isotype

Rabbit IgG

Storage Buffer

Supplied in TBS (pH 7.4) containing 50% glycerol, 1% BSA and 0.02% Proclin 300.

Storage

Store at -20 °C for one year.

Recommended Dilutions

Western Blotting (WB): 1:500-1:2,000

Immunohistochemistry(IHC): 1:100-1:500

Immunocytochemistry (IC): 1:100-1:500

Note: This product is for research use only.

SUPPORT

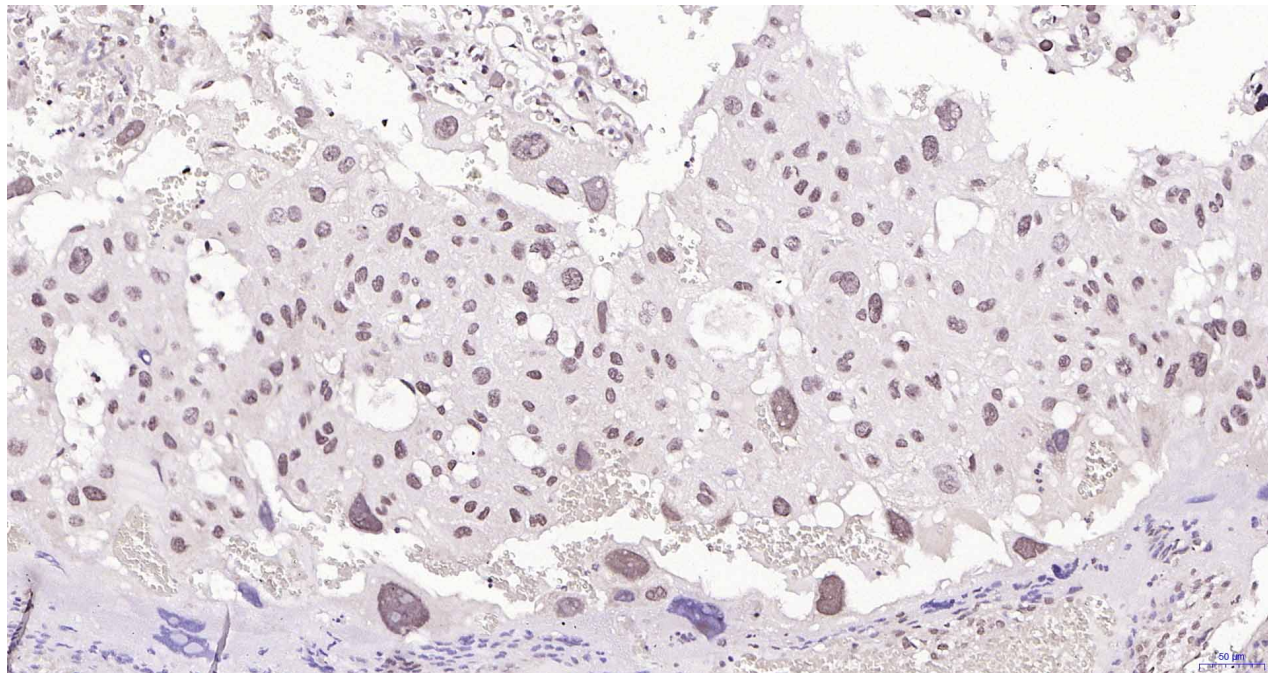
SUPPORT@GENUINBIOTECH.COM
TEL: +1-540-855-7041

ORDERS

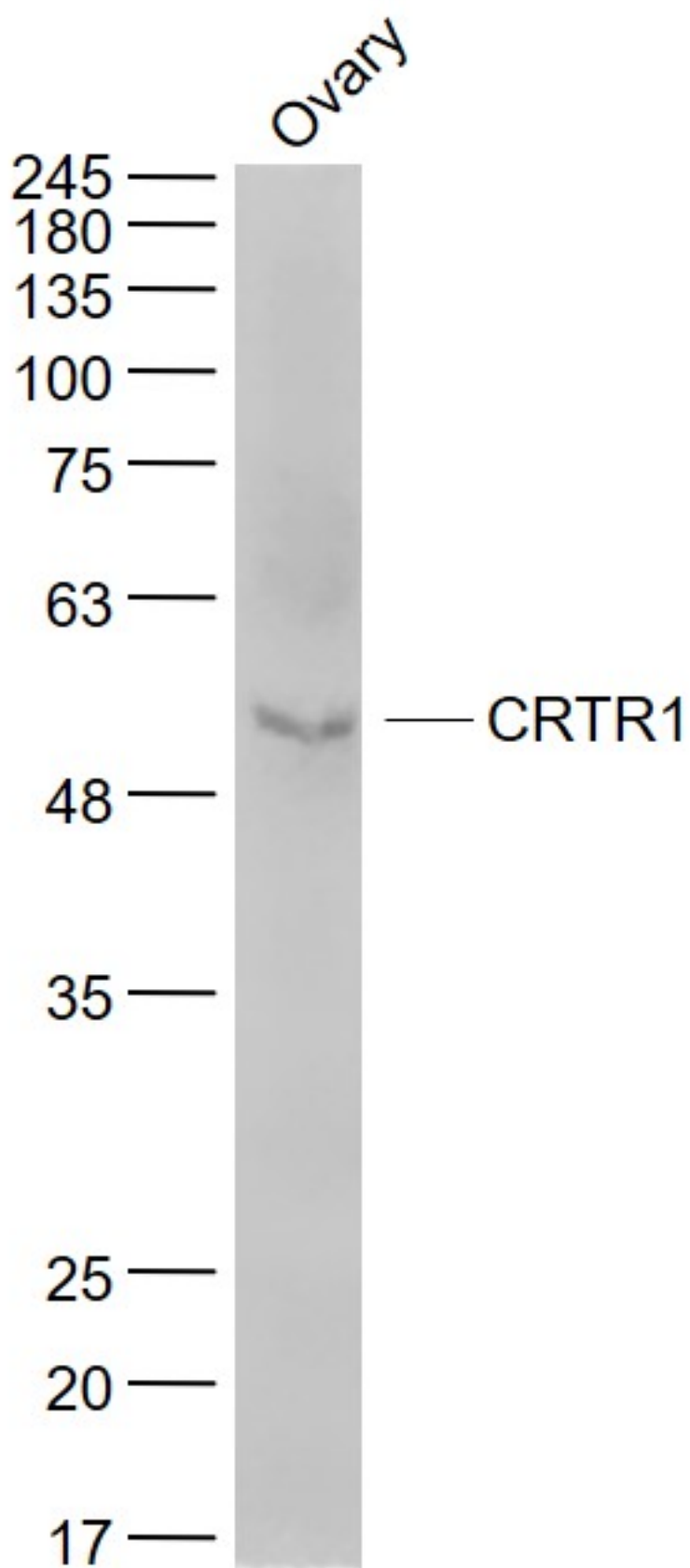
SALES@GENUINBIOTECH.COM
FAX: +1-540-855-7041

WWW.GENUINBIOTECH.COM

Validation Data



Paraformaldehyde-fixed, paraffin embedded Rat Placenta; Antigen retrieval by boiling in sodium citrate buffer (pH6.0) for 15 min; Antibody incubation with TFCP2L1 antibody (Cat#52629, 1:200) overnight at 4°C, followed by conjugation to the SP Kit and DAB staining.



Western blotting analysis using anti-TFCP2L1 antibody (Cat#52629). Total lysates (40 µg) were loaded and separated by SDS-PAGE. The blot was incubated with anti-TFCP2L1 antibody (Cat#52629, 1:1,000) and IRDye800CW-conjugated goat anti-rabbit secondary antibody (1:20,000) respectively.