

## Catalog #: 52632

### Aliases

TJP1; Tight Junction Protein 1; Tight Junction Protein ZO-1; ZO-1; Zona Occludens 1; DKFZp686M05161; MGC133289; Zonula Occludens 1 Protein; Zonula Occludens Protein 1; Zona Occludens Protein 1; ZO1

### Background

Gene Name: TJP1

NCBI Gene Entry: [7082](#)

UniProt Entry: [Q07157](#)

### Application Information

Molecular Weight: Predicted, 195 kDa; observed, 250 kDa

Clonality: Rabbit polyclonal antibody

Species Reactivity: Human, mouse, rat

Applications Tested: Western blotting (WB)

### Immunogen

A synthesized peptide derived from human TJP1

### Isotype

Rabbit IgG

### Storage Buffer

Supplied in PBS containing 50% glycerol, and 0.02% sodium azide.

### Storage

Store at -20 °C for one year.

### Recommended Dilutions

Western Blotting (WB): 1:500-1:2,500

**Note:** This product is for research use only.

### Validation Data

---

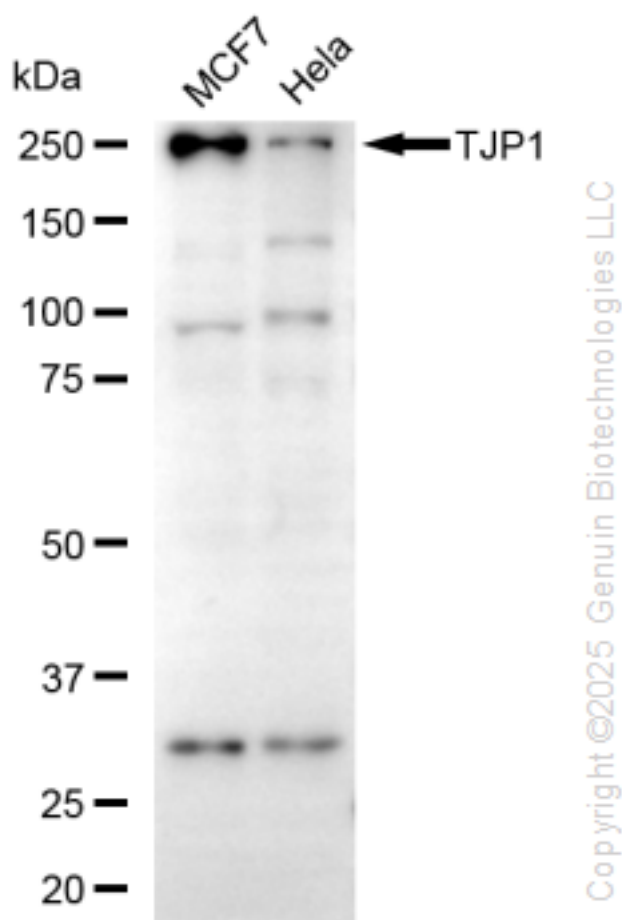
#### SUPPORT

SUPPORT@GENUINBIOTECH.COM  
TEL: +1-540-855-7041

#### ORDERS

SALES@GENUINBIOTECH.COM  
FAX: +1-540-855-7041

[WWW.GENUINBIOTECH.COM](http://WWW.GENUINBIOTECH.COM)



Western blotting analysis using anti-TJP1 antibody (Cat#52632). Total cell lysates (30 µg) from various cell lines were loaded and separated by SDS-PAGE. The blot was incubated with anti-TJP1 antibody (Cat#52632, 1:2,500) and HRP-conjugated goat anti-rabbit secondary antibody (Cat#201, 1:20,000) respectively. Image was developed using FeQ™ ECL Substrate Kit (Cat#226).

**SUPPORT**

SUPPORT@GENUINBIOTECH.COM  
TEL: +1-540-855-7041

**ORDERS**

SALES@GENUINBIOTECH.COM  
FAX: +1-540-855-7041

[WWW.GENUINBIOTECH.COM](http://WWW.GENUINBIOTECH.COM)