

Catalog #: 52645

Aliases

NEO1; Neogenin 1; IGDCC2; NGN 2; NTN1R2; Immunoglobulin Superfamily DCC Subclass Member 2; HsT17534; Neogenin; Immunoglobulin Superfamily, DCC Subclass, Member 2; Neogenin (Chicken) Homolog 1; Neogenin Homolog 1

Background

Gene Name: NEO1

NCBI Gene Entry: [4756](#)

UniProt Entry: [Q92859](#)

Application Information

Molecular Weight: Predicted, 160 kDa; observed, 160 kDa

Clonality: Rabbit polyclonal antibody

Species Reactivity: Human, mouse, rat

Applications Tested: Western blotting (WB)

Immunogen

A synthesized peptide derived from human NEO1

Isotype

Rabbit IgG

Storage Buffer

Supplied in PBS containing 50% glycerol, 0.5% BSA and 0.02% sodium azide.

Storage

Store at -20 °C for one year.

Recommended Dilutions

Western Blotting (WB): 1:500-1:2,000

Note: This product is for research use only.

Validation Data

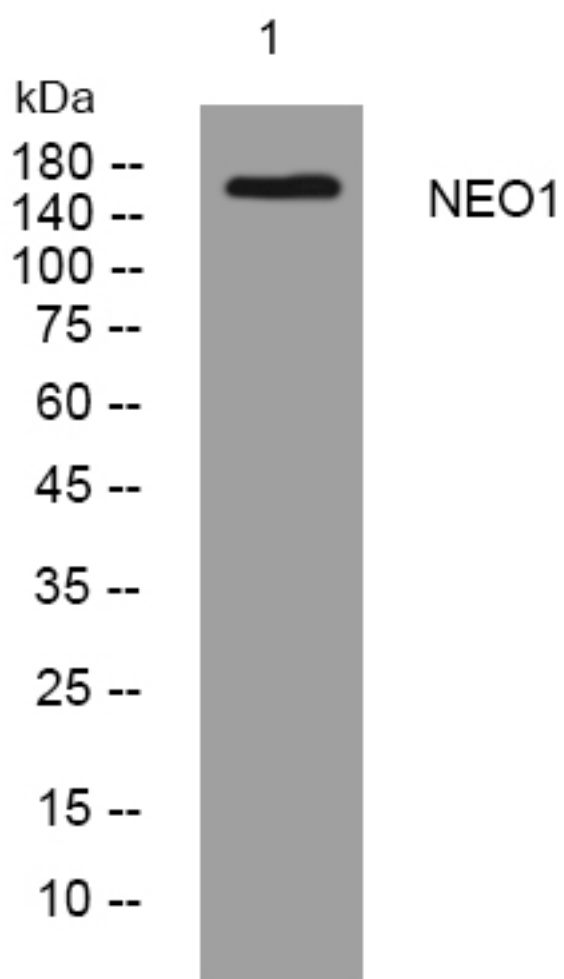
SUPPORT

SUPPORT@GENUINBIOTECH.COM
TEL: +1-540-855-7041

ORDERS

SALES@GENUINBIOTECH.COM
FAX: +1-540-855-7041

WWW.GENUINBIOTECH.COM



Western blotting analysis of lysates from HpeG2 cells, primary antibody was diluted at 1:1,000, 4°C over night.