

Catalog #: 52652

Aliases

SLC7A1; Solute Carrier Family 7 Member 1; CAT-1; REC1L; HCAT1; ATRC1; ERR; Solute Carrier Family 7 (Cationic Amino Acid Transporter, Y+ System), Member 1; High Affinity Cationic Amino Acid Transporter 1; Ecotropic Retroviral Leukemia Receptor Homolog; System Y+ Basic Amino Acid Transporter; Ecotropic Retrovirus Receptor Homolog; Amino Acid Transporter, Cationic 1; Ecotropic Retroviral Receptor; CAT1

Background

Gene Name: SLC7A1

NCBI Gene Entry: [6541](#)

UniProt Entry: [P30825](#)

Application Information

Molecular Weight: Predicted, 68 kDa; observed, 68 kDa

Clonality: Rabbit polyclonal antibody

Species Reactivity: Human, mouse, rat

Applications Tested: Western blotting (WB)

Immunogen

A synthesized peptide derived from human CTR1

Isotype

Rabbit IgG

Storage Buffer

Supplied in PBS containing 50% glycerol, 0.5% BSA and 0.02% sodium azide.

Storage

Store at -20 °C for one year.

Recommended Dilutions

Western Blotting (WB): 1:500-1:2,000

Note: This product is for research use only.

Validation Data

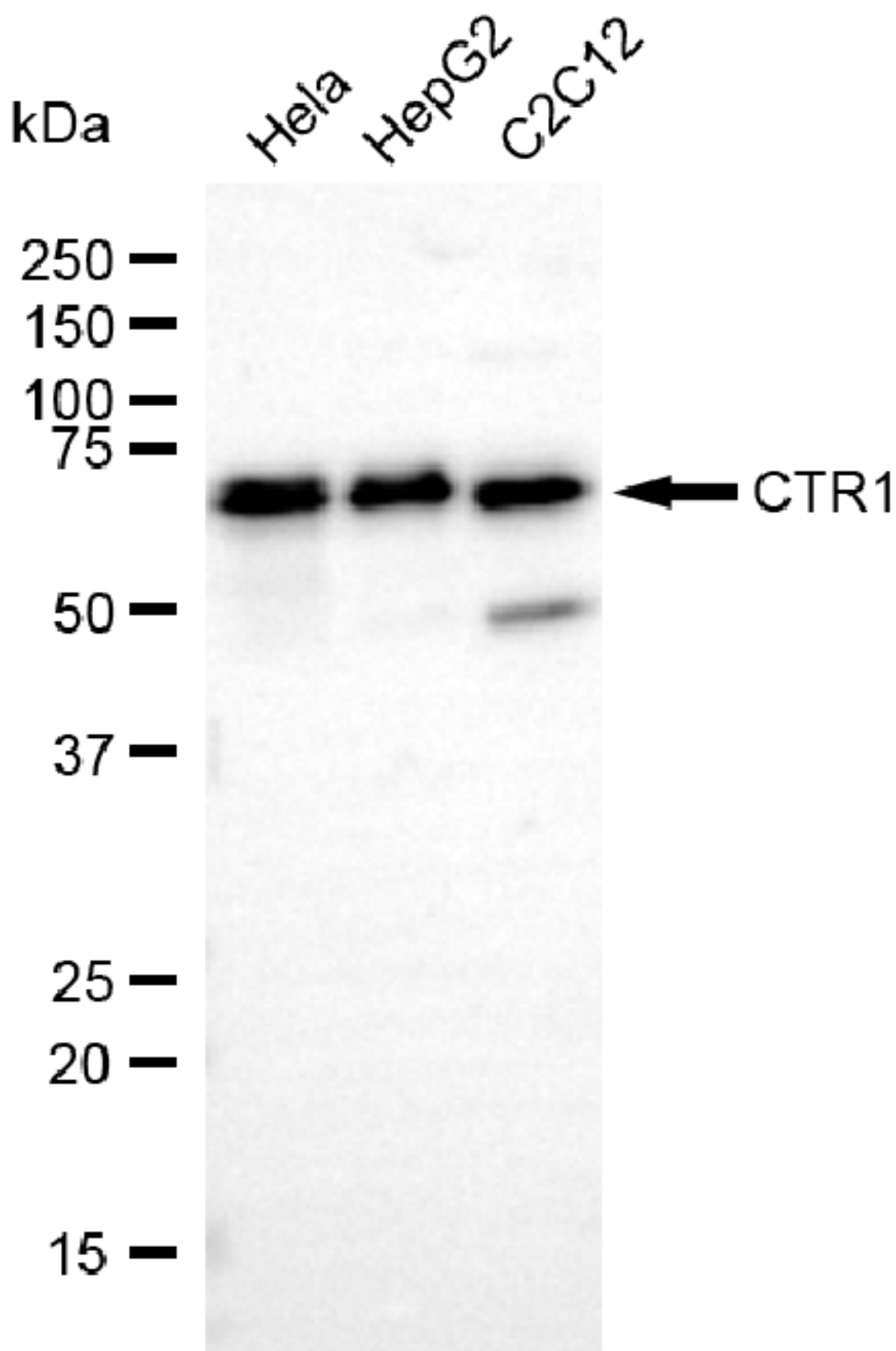
SUPPORT

SUPPORT@GENUINBIOTECH.COM
TEL: +1-540-855-7041

ORDERS

SALES@GENUINBIOTECH.COM
FAX: +1-540-855-7041

WWW.GENUINBIOTECH.COM



Copyright ©2025 Genuin Biotechnologies LLC

Western blotting analysis using anti-SLC7A1 antibody (Cat#52652). Total lysates (30 µg) were

SUPPORT

SUPPORT@GENUINBIOTECH.COM
TEL: +1-540-855-7041

ORDERS

SALES@GENUINBIOTECH.COM
FAX: +1-540-855-7041

WWW.GENUINBIOTECH.COM

loaded and separated by SDS-PAGE. The blot was incubated with anti-SLC7A1 antibody (Cat#52652, 1:2,500) and HRP-conjugated goat anti-rabbit secondary antibody (Cat#201, 1:20,000) respectively. Image was developed using FeQ™ ECL Substrate Kit (Cat#226).