

Catalog #: 52662

Aliases

TUBA1B; Tubulin Alpha 1b; K-ALPHA-1; Tubulin Alpha-Ubiquitous Chain; Tubulin, Alpha, Ubiquitous; Alpha-Tubulin Ubiquitous; Tubulin Alpha-1B Chain; Tubulin K-Alpha-1; Alpha Tubulin; EC 3.6.5.-

Background

Gene Name: TUBA1B

NCBI Gene Entry: [7277](#)

UniProt Entry: [P68363](#)

Application Information

Molecular Weight: Predicted, 50 kDa; observed, 50 kDa

Clonality: Rabbit monoclonal antibody

Clone ID: 25GB5685

Species Reactivity: Human, mouse, rat

Applications Tested: Western blotting (WB), immunohistochemistry (IHC), immunocytochemistry (IC), immunoprecipitation (IP)

Immunogen

Recombinant protein of human TUBA1B

Isotype

Rabbit IgG

Storage Buffer

Supplied in PBS containing 50% glycerol, 0.05% BSA and 0.05% Proclin 300.

Storage

Store at -20 °C for one year.

Recommended Dilutions

Western Blotting (WB): 1:1,000-1:5,000

Immunohistochemistry (IHC): 1:200-1:1,000

Immunocytochemistry (IC): 1:200-1:1,000

Immunoprecipitation (IP): 1:50-1:200

SUPPORT

SUPPORT@GENUINBIOTECH.COM
TEL: +1-540-855-7041

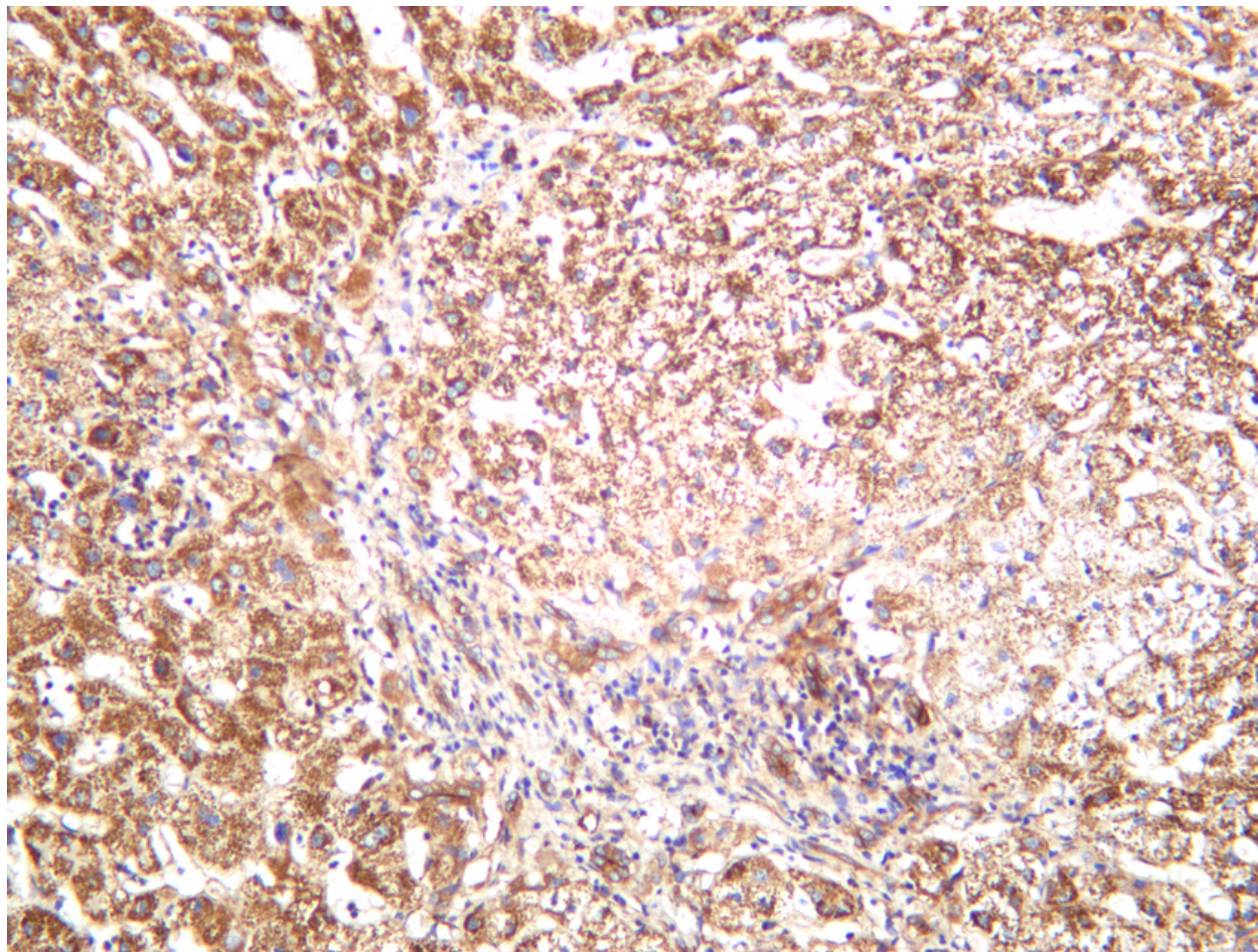
ORDERS

SALES@GENUINBIOTECH.COM
FAX: +1-540-855-7041

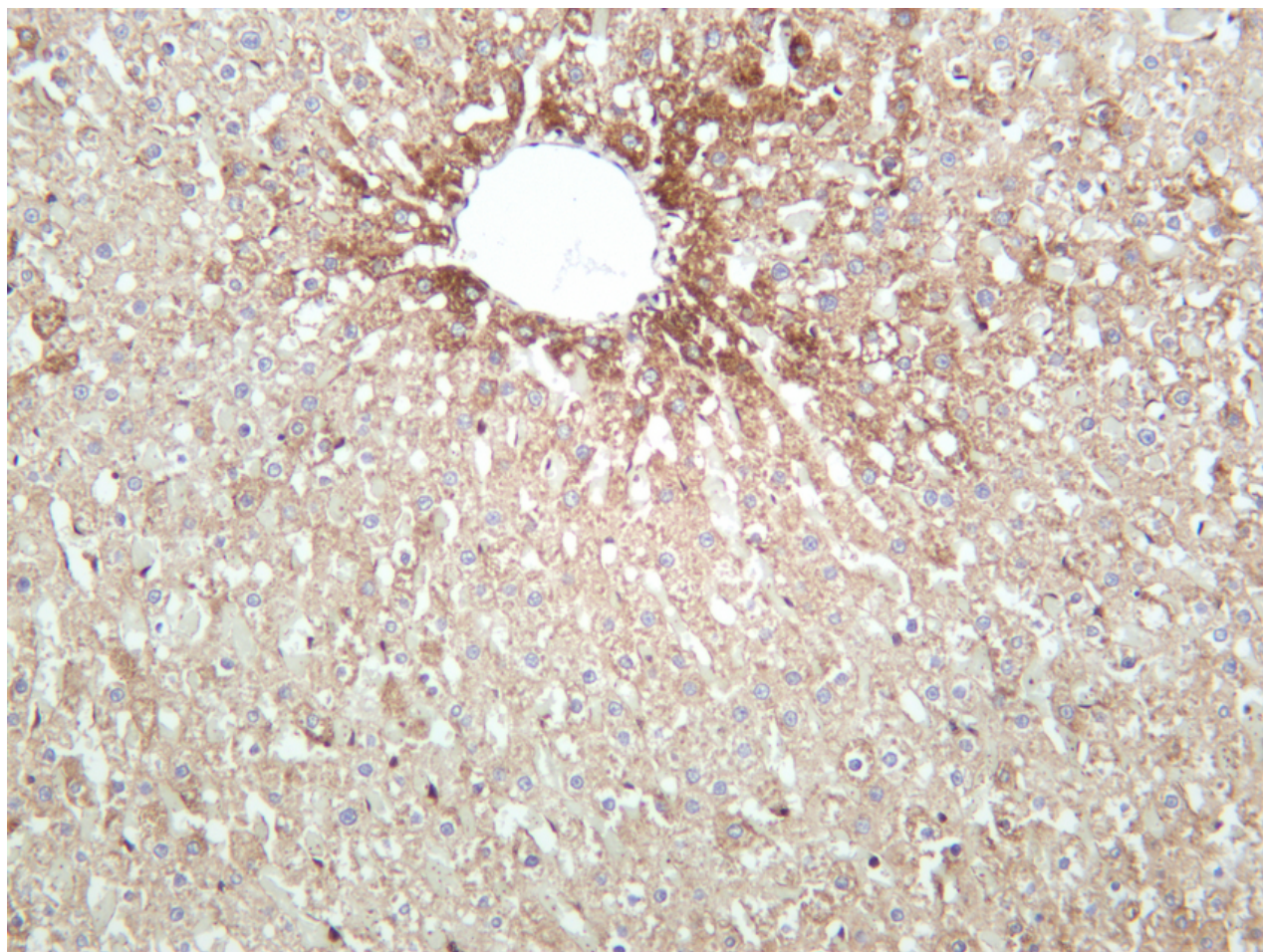
WWW.GENUINBIOTECH.COM

Note: This product is for research use only.

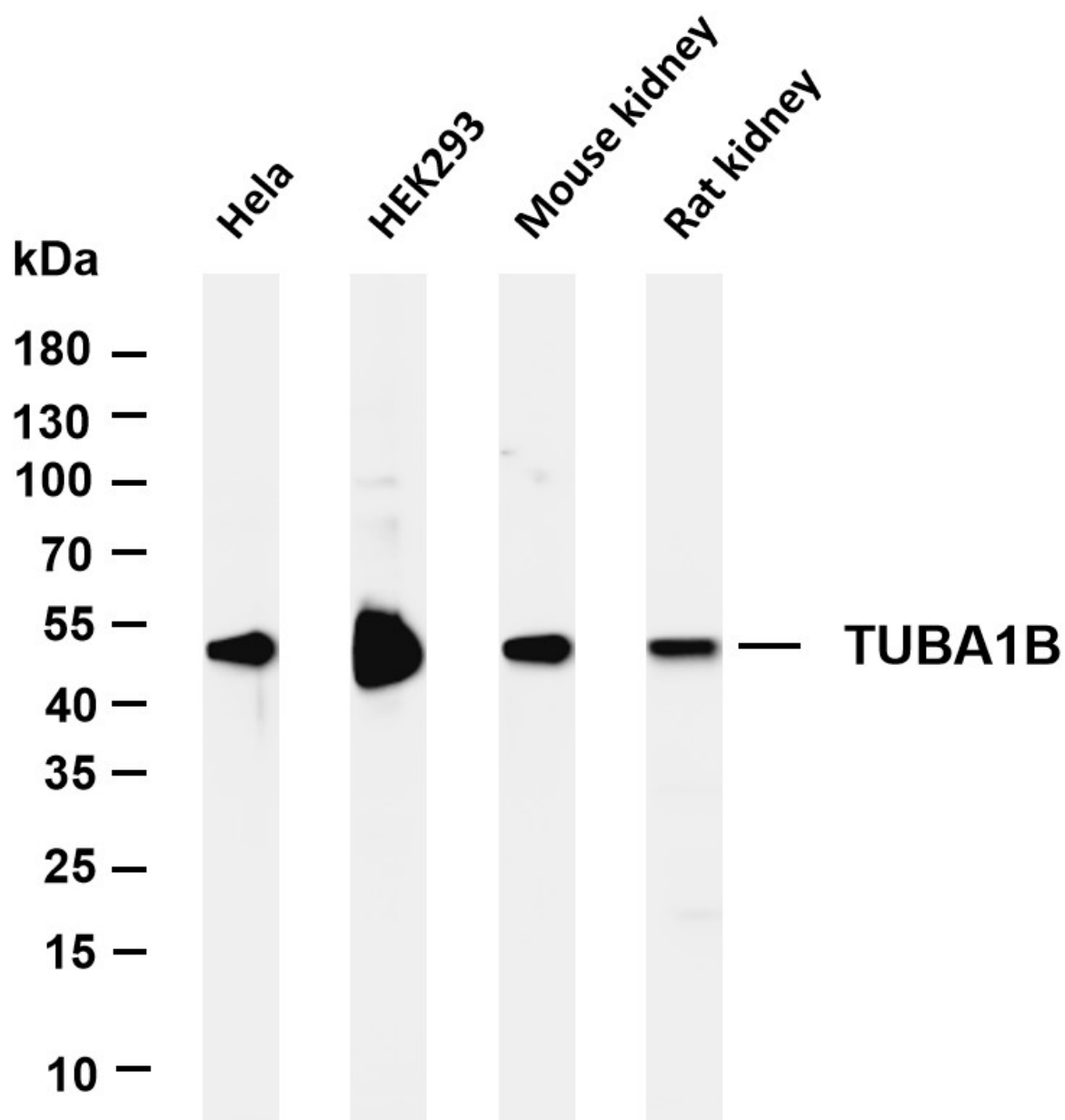
Validation Data



Human liver was stained with anti-TUBA1B antibody.



Rat liver was stained with anti-TUBA1B antibody.



Western blotting analysis using anti-TUBA1B antibody (Cat#52662). Total lysates were loaded and separated by SDS-PAGE. The blot was incubated with anti-TUBA1B antibody (Cat#52662, 1:2,000) and HRP-conjugated goat anti-rabbit secondary antibody respectively.

SUPPORT

SUPPORT@GENUINBIOTECH.COM
TEL: +1-540-855-7041

ORDERS

SALES@GENUINBIOTECH.COM
FAX: +1-540-855-7041

WWW.GENUINBIOTECH.COM