

Catalog #: 52665

Aliases

ABCB11; ATP Binding Cassette Subfamily B Member 11; Bile Salt Export Pump; PFIC-2; ABC16; SPGP; PGY4; BSEP; ATP-Binding Cassette, Sub-Family B (MDR/TAP), Member 11; Progressive Familial Intrahepatic Cholestasis 2; ATP-Binding Cassette Sub-Family B Member 11; ABC Member 16, MDR/TAP Subfamily; PFIC2; Sister P-Glycoprotein; EC 3.6.3.44; EC 7.6.2.-; EC 3.6.3; BRIC2

Background

Gene Name: ABCB11

NCBI Gene Entry: [8647](#)

UniProt Entry: [O95342](#)

Application Information

Molecular Weight: Predicted, 146 kDa; observed, 145 kDa

Clonality: Rabbit polyclonal antibody

Species Reactivity: Human, mouse, rat

Applications Tested: Western blotting (WB)

Immunogen

A synthesized peptide derived from human ABCB11

Isotype

Rabbit IgG

Storage Buffer

Supplied in PBS containing 50% glycerol, 0.5% BSA and 0.02% sodium azide.

Storage

Store at -20 °C for one year.

Recommended Dilutions

Western Blotting (WB): 1:500-1:2,500

Note: This product is for research use only.

Validation Data

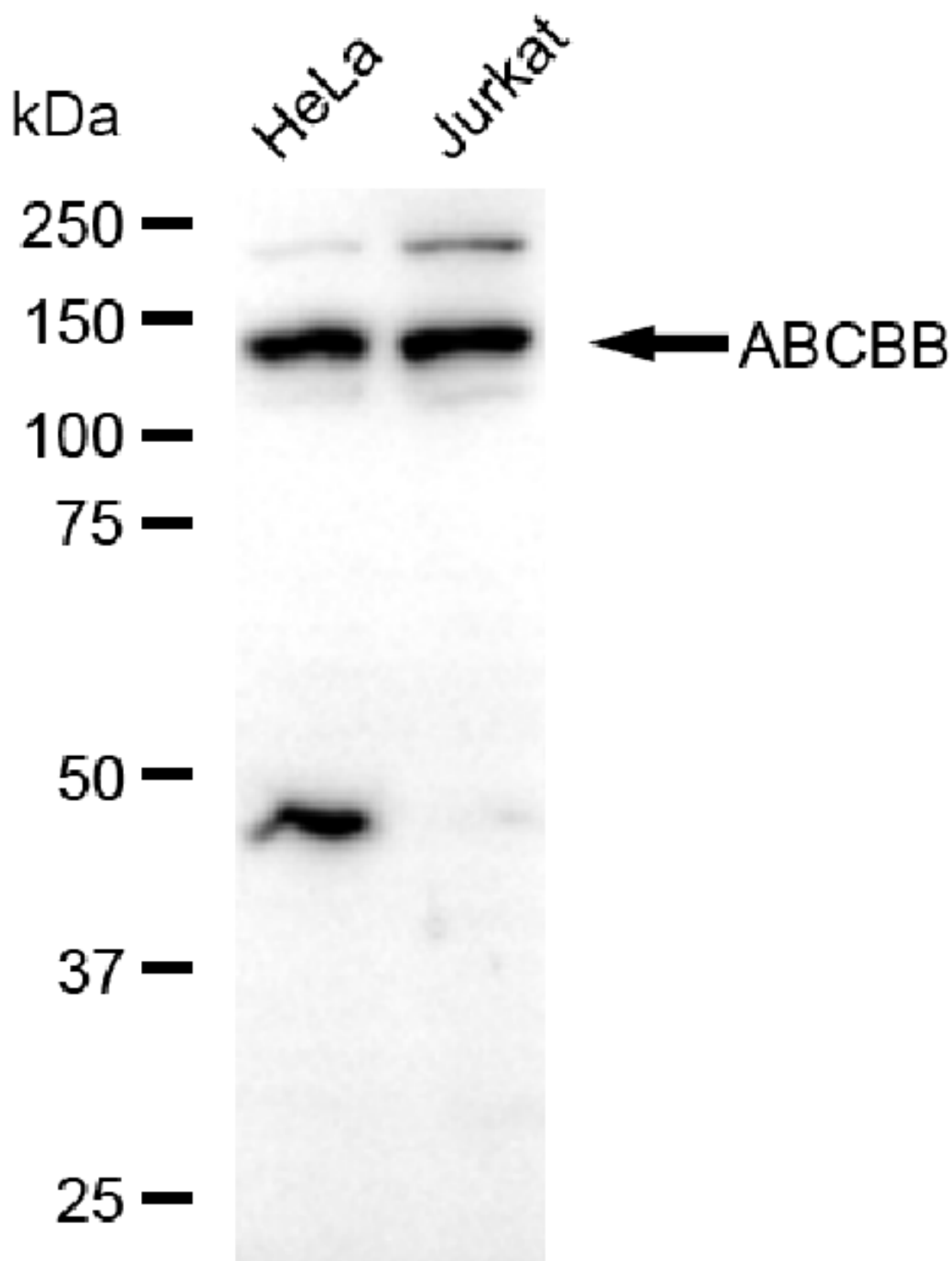
SUPPORT

SUPPORT@GENUINBIOTECH.COM
TEL: +1-540-855-7041

ORDERS

SALES@GENUINBIOTECH.COM
FAX: +1-540-855-7041

WWW.GENUINBIOTECH.COM



Copyright ©2025 Genuin Biotechnologies LLC

Western blotting analysis using anti-ABCB11 antibody (Cat#52665). Total lysates (30 µg) were loaded and separated by SDS-PAGE. The blot was incubated with anti-ABCB11 antibody (Cat#52665, 1:2,500) and HRP-conjugated goat anti-rabbit secondary antibody (Cat#201, 1:20,000) respectively. Image was developed using FeQ™ ECL Substrate Kit (Cat#226).

SUPPORT

SUPPORT@GENUINBIOTECH.COM
TEL: +1-540-855-7041

ORDERS

SALES@GENUINBIOTECH.COM
FAX: +1-540-855-7041

WWW.GENUINBIOTECH.COM