

## Catalog #: 5268

### Aliases

RNF139; Ring Finger Protein 139; TRC8; HRCA1; RCA1; Translocation In Renal Carcinoma On Chromosome 8 Protein; Translocation In Renal Carcinoma, Chromosome 8; RING-Type E3 Ubiquitin Transferase RNF139; E3 Ubiquitin-Protein Ligase RNF139; Patched Related Protein Translocated In Renal Cancer; Multiple Membrane Spanning Receptor TRC8; RING Finger Protein 139; EC 2.3.2.27

### Background

Gene Name: RNF139

NCBI Gene Entry: [11236](#)

UniProt Entry: [Q8WU17](#)

### Application Information

Molecular Weight: Predicted, 76 kDa; observed, 70 kDa

Clonality: Mouse monoclonal antibody

Clone ID: 25GB665

Species Reactivity: Human, mouse, rat

Applications Tested: Western blotting (WB)

### Immunogen

Recombinant protein of human RNF139

### Isotype

Mouse IgG2a

### Storage Buffer

Supplied in PBS (pH 7.4) containing 50% glycerol, and 0.02% sodium azide.

### Storage

Store at -20 °C for one year.

### Recommended Dilutions

Western Blotting (WB): 1:400-1:2,000

**Note:** This product is for research use only.

---

#### SUPPORT

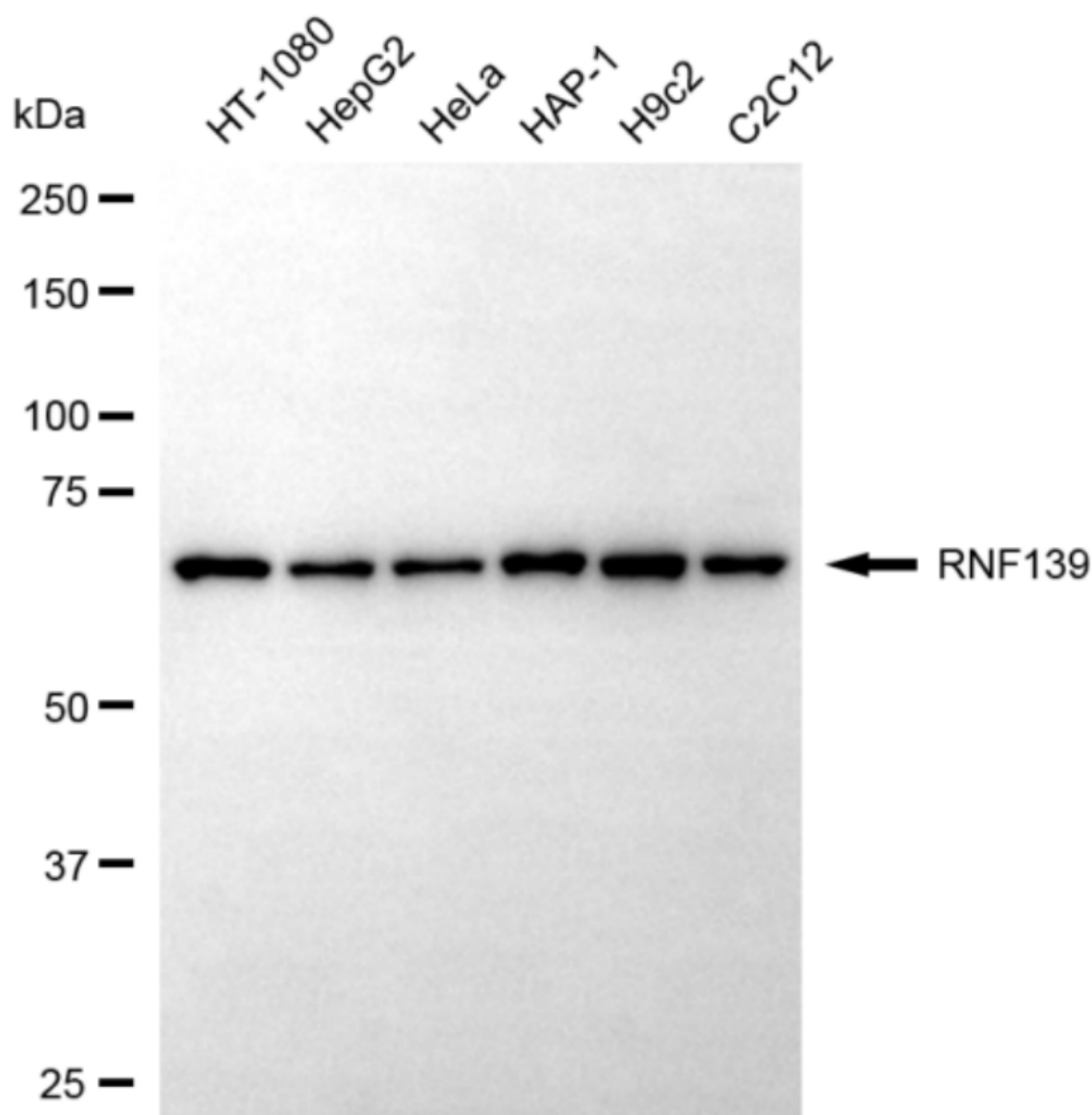
SUPPORT@GENUINBIOTECH.COM  
TEL: +1-540-855-7041

#### ORDERS

SALES@GENUINBIOTECH.COM  
FAX: +1-540-855-7041

[WWW.GENUINBIOTECH.COM](http://WWW.GENUINBIOTECH.COM)

## Validation Data



Copyright ©2025 Genuin Biotechnologies LLC

Western blotting analysis using anti-RNF139 antibody (Cat#5268). Total cell lysates (30  $\mu$ g) from various cell lines were loaded and separated by SDS-PAGE. The blot was incubated with anti-RNF139 antibody (Cat#5268, 1:2,000) and HRP-conjugated goat anti-mouse secondary antibody (Cat#101, 1:20,000) respectively. Image was developed using FeQ™ ECL Substrate Kit (Cat#226).

## SUPPORT

SUPPORT@GENUINBIOTECH.COM  
TEL: +1-540-855-7041

## ORDERS

SALES@GENUINBIOTECH.COM  
FAX: +1-540-855-7041

WWW.GENUINBIOTECH.COM