

Catalog #: 52712

Aliases

CTSA; Cathepsin A; Lysosomal Protective Protein; Carboxypeptidase C; PPGB; Carboxypeptidase Y-Like Kininase; Protective Protein Cathepsin A; Lysosomal Carboxypeptidase A; Carboxypeptidase-L; Urinary Kininase; EC 3.4.16.5; Deamidase; PPCA; GSL; Protective Protein For Beta-Galactosidase (Galactosialidosis); Protective Protein For Beta-Galactosidase; Beta-Galactosidase Protective Protein; Beta-Galactosidase; Carboxypeptidase L; EC 3.4.16; GLB2; NGBE

Background

Gene Name: CTSA

NCBI Gene Entry: [5476](#)

UniProt Entry: [P10619](#)

Application Information

Molecular Weight: Predicted, 54 kDa; observed, 54 kDa

Clonality: Rabbit polyclonal antibody

Species Reactivity: Human, mouse, rat

Applications Tested: Western blotting (WB), immunohistochemistry (IHC), immunocytochemistry (IC)

Immunogen

A synthesized peptide derived from human Protective protein

Isotype

Rabbit IgG

Storage Buffer

Supplied in TBS (pH 7.4) containing 50% glycerol, 1% BSA and 0.02% Proclin 300.

Storage

Store at -20 °C for one year.

Recommended Dilutions

Western Blotting (WB): 1:500-1:2,000

Immunohistochemistry (IHC): 1:100-1:500

Immunocytochemistry (IC): 1:100-1:500

SUPPORT

SUPPORT@GENUINBIOTECH.COM
TEL: +1-540-855-7041

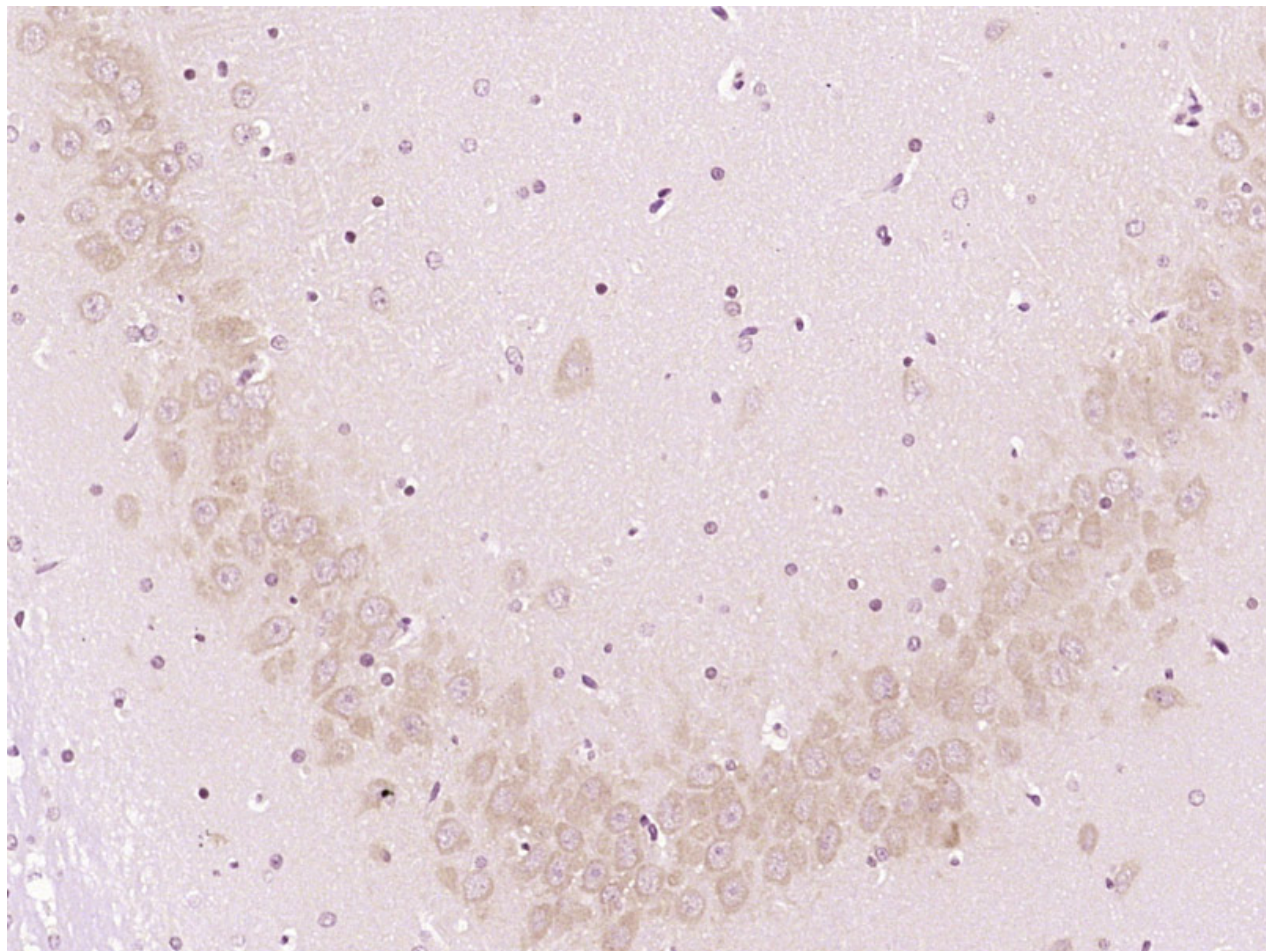
ORDERS

SALES@GENUINBIOTECH.COM
FAX: +1-540-855-7041

WWW.GENUINBIOTECH.COM

Note: This product is for research use only.

Validation Data



Immunohistochemical analysis of paraformaldehyde-fixed, paraffin embedded Rat brain; Antigen retrieval by boiling in sodium citrate buffer (pH6.0) for 15min; Block endogenous peroxidase by 3% hydrogen peroxide for 20 minutes; Blocking buffer (normal goat serum) at 37°C for 30min; Antibody incubation with Cathepsin A antibody (Cat#52712, 1:400) at 4°C, followed by operating according to SP Kit instructions and DAB staining.

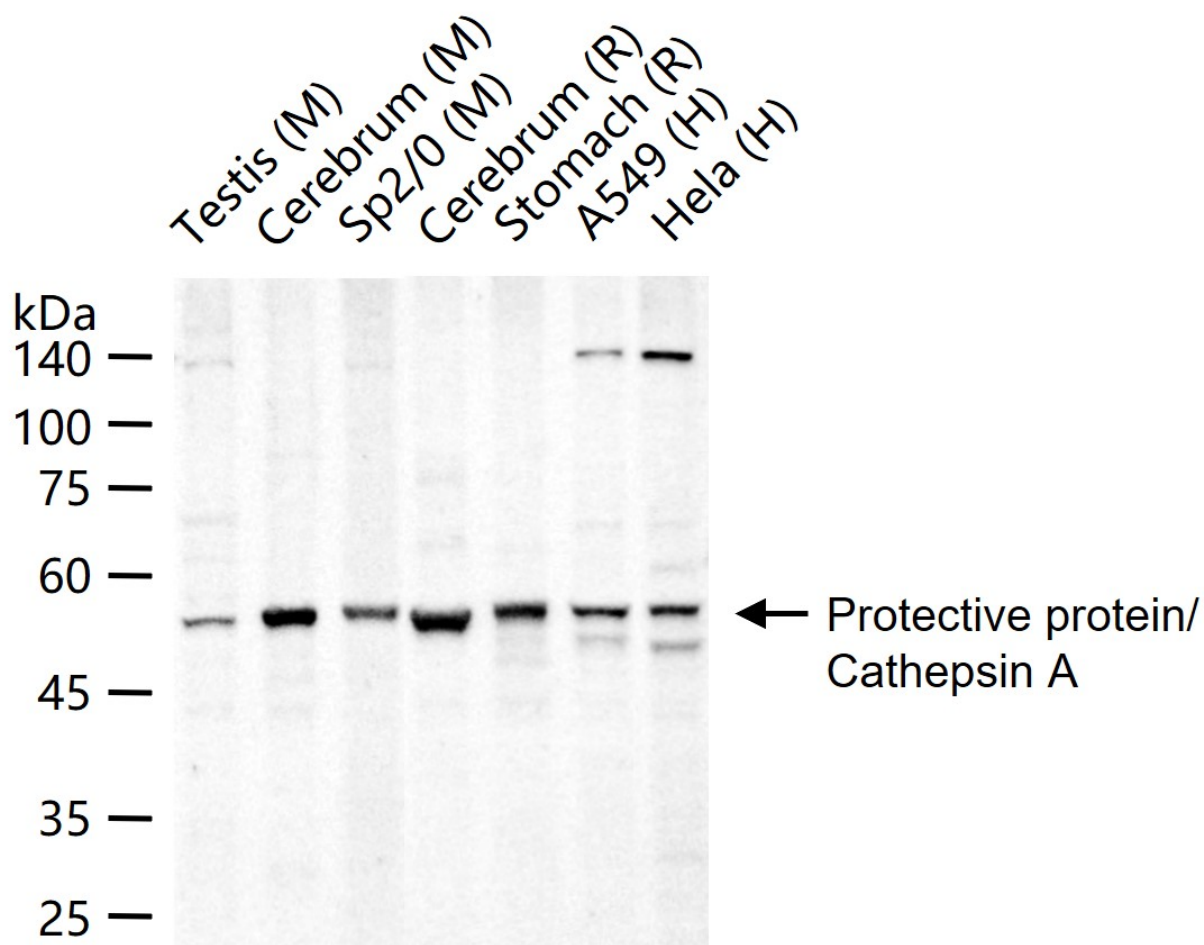
SUPPORT

SUPPORT@GENUINBIOTECH.COM
TEL: +1-540-855-7041

ORDERS

SALES@GENUINBIOTECH.COM
FAX: +1-540-855-7041

WWW.GENUINBIOTECH.COM



Western blotting analysis using anti-Cathepsin A antibody (Cat#52712). Total lysates (25 μ g) were loaded and separated by SDS-PAGE. The blot was incubated with anti-Cathepsin A antibody (Cat#52712, 1:500) and conjugated goat anti-rabbit secondary antibody respectively.