

Catalog #: 52713

Aliases

ABCF1; ATP Binding Cassette Subfamily F Member 1; ABC50; ATP-Binding Cassette, Sub-Family F (GCN20), Member 1; ATP-Binding Cassette Sub-Family F Member 1; TNF-Alpha-Stimulated ABC Protein ; EST123147; ATP-Binding Cassette 50 (TNF-Alpha Stimulated); TNFalpha-Inducible ATP-Binding Protein; ATP-Binding Cassette 50; EC 3.6.3.17; EC 2.7.7.6; ABC27

Background

Gene Name: ABCF1
NCBI Gene Entry: [23](#)
UniProt Entry: [Q8NE71](#)

Application Information

Molecular Weight: Predicted, 96 kDa; observed, 96 kDa
Clonality: Rabbit monoclonal antibody
Clone ID: 25GB5695
Species Reactivity: Human, rat
Applications Tested: Western blotting (WB), immunohistochemistry (IHC), immunocytochemistry (IC)

Immunogen

A synthesized peptide derived from human ABCF1

Isotype

Rabbit IgG

Storage Buffer

Supplied in TBS (pH 7.4) containing 50% glycerol, 1% BSA and 0.02% Proclin 300.

Storage

Store at -20 °C for one year.

Recommended Dilutions

Western Blotting (WB): 1:1,000-1:2,000
Immunohistochemistry (IHC): 1:100-1:200
Immunocytochemistry (IC): 1:50-1:200

SUPPORT

SUPPORT@GENUINBIOTECH.COM
TEL: +1-540-855-7041

ORDERS

SALES@GENUINBIOTECH.COM
FAX: +1-540-855-7041

WWW.GENUINBIOTECH.COM

Note: This product is for research use only.

Validation Data

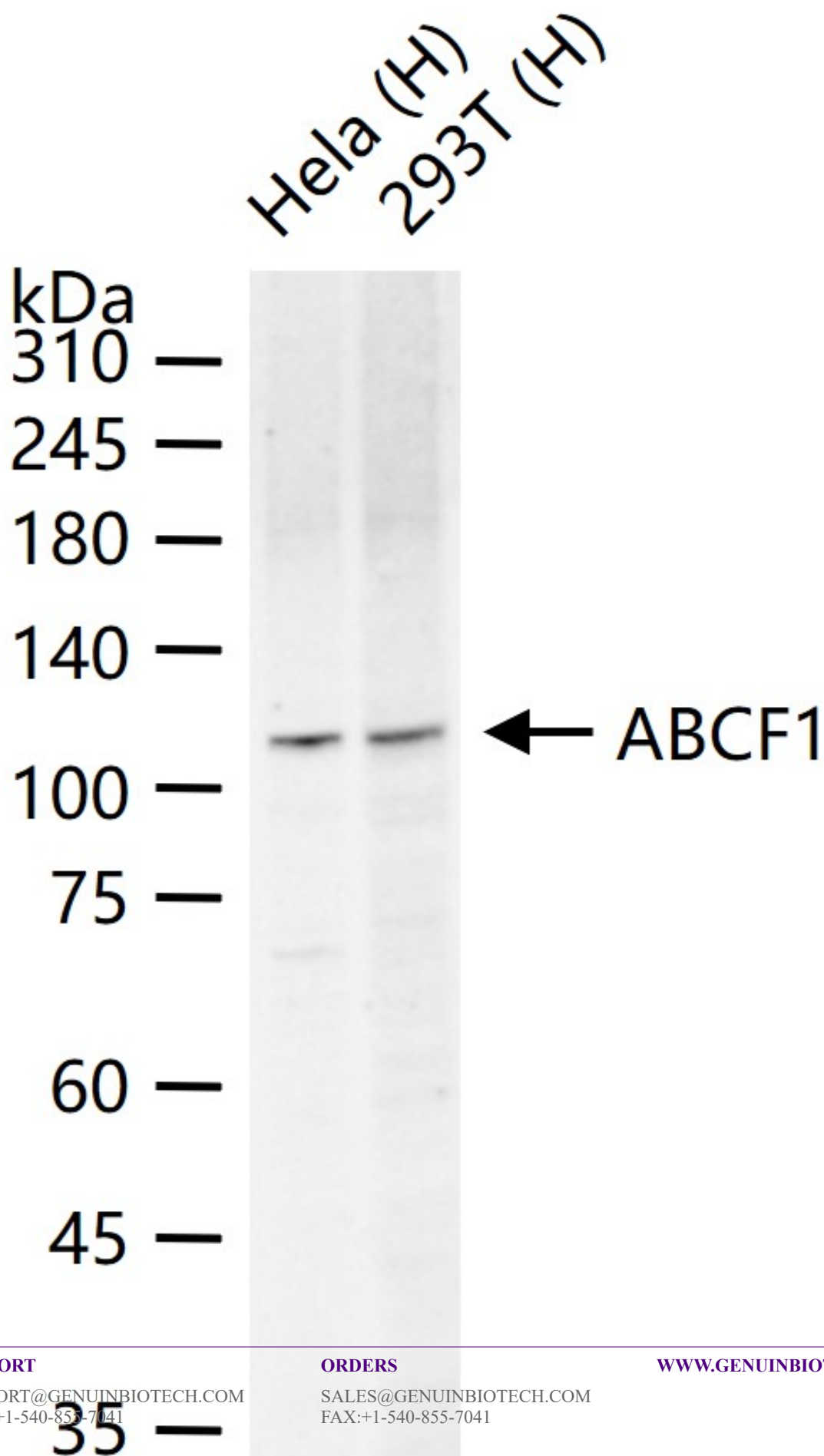
SUPPORT

SUPPORT@GENUINBIOTECH.COM
TEL: +1-540-855-7041

ORDERS

SALES@GENUINBIOTECH.COM
FAX:+1-540-855-7041

WWW.GENUINBIOTECH.COM



Western blotting analysis using anti-ABCF1 antibody (Cat#52713). Total lysates (25 µg) were loaded and separated by SDS-PAGE. The blot was incubated with anti-ABCF1 antibody (Cat#52713, 1:1,000) and conjugated goat anti-rabbit secondary antibody respectively.