

Catalog #: 52718

Aliases

FPR1; Formyl Peptide Receptor 1; FPR; FMet-Leu-Phe Receptor; FMLP; N-Formylpeptide Chemoattractant Receptor; FMLP Receptor; N-Formyl Peptide Receptor; N-Formylpeptide Receptor

Background

Gene Name: FPR1

NCBI Gene Entry: [2357](#)

UniProt Entry: [P21462](#)

Application Information

Molecular Weight: Predicted, 38 kDa; observed, 60 kDa

Clonality: Rabbit polyclonal antibody

Species Reactivity: Human

Applications Tested: Western blotting (WB)

Immunogen

A synthesized peptide derived from human FPR1

Isotype

Rabbit IgG

Storage Buffer

Supplied in TBS (pH 7.4) containing 50% glycerol, 1% BSA and 0.02% Proclin 300.

Storage

Store at -20 °C for one year.

Recommended Dilutions

Western Blotting (WB): 1:500-1:2,000

Note: This product is for research use only.

Validation Data

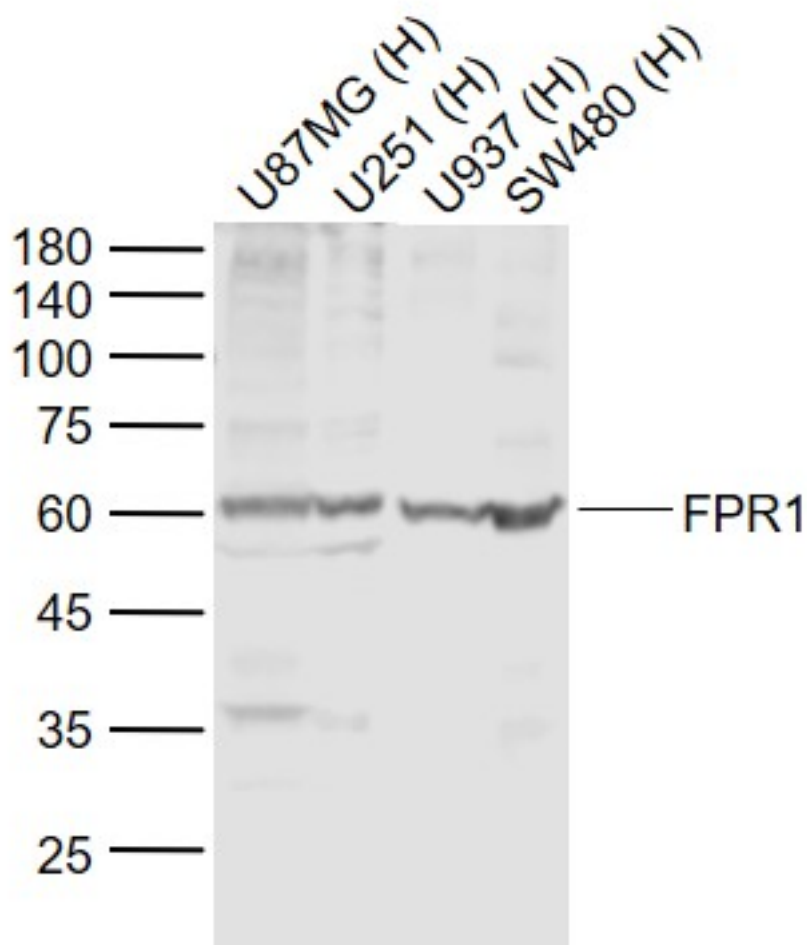
SUPPORT

SUPPORT@GENUINBIOTECH.COM
TEL: +1-540-855-7041

ORDERS

SALES@GENUINBIOTECH.COM
FAX: +1-540-855-7041

WWW.GENUINBIOTECH.COM



Western blotting analysis using anti-FPR1 antibody (Cat#52718). Total lysates (30 μ g) were loaded and separated by SDS-PAGE. The blot was incubated with anti-FPR1 antibody (Cat#52718, 1:1,000) and IRDye800CW-conjugated goat anti-rabbit secondary antibody (1:20,000) respectively.

SUPPORT

SUPPORT@GENUINBIOTECH.COM
TEL: +1-540-855-7041

ORDERS

SALES@GENUINBIOTECH.COM
FAX: +1-540-855-7041

WWW.GENUINBIOTECH.COM