

## Catalog #: 5272

### Aliases

MS4A1; Membrane Spanning 4-Domains A1; Bp35; FMC7; CD20; B1; Membrane-Spanning 4-Domains, Subfamily A, Member 1; Leukocyte Surface Antigen Leu-16; B-Lymphocyte Antigen CD20; CD20 Antigen; Membrane-Spanning 4-Domains Subfamily A Member 1; B-Lymphocyte Cell-Surface Antigen B1; B-Lymphocyte Surface Antigen B1; CD20 Receptor; LEU-16; CVID5; S7

### Background

Gene Name: MS4A1

NCBI Gene Entry: [931](#)

UniProt Entry: [P11836](#)

### Application Information

Molecular Weight: Predicted, 33 kDa; observed, 33 kDa

Clonality: Mouse monoclonal antibody

Clone ID: 25GB685

Species Reactivity: Human

Applications Tested: Western blotting (WB)

### Immunogen

Purified protein of human MS4A1

### Isotype

Mouse IgG2a

### Storage Buffer

Supplied in PBS (pH 7.4) containing 50% glycerol, and 0.02% sodium azide.

### Storage

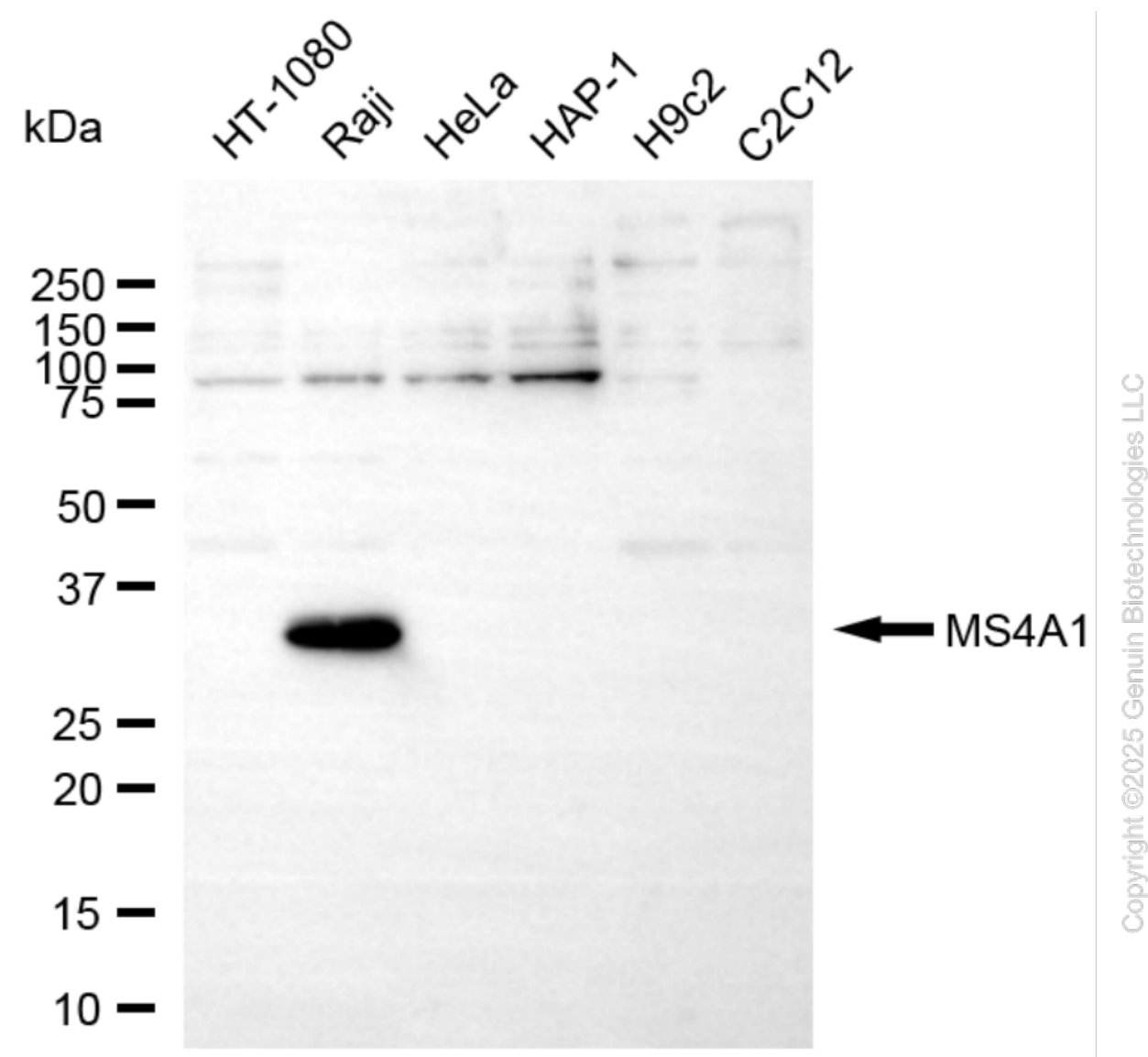
Store at -20 °C for one year.

### Recommended Dilutions

Western Blotting (WB): 1:400-1:2,000

**Note:** This product is for research use only.

## Validation Data



Western blotting analysis using anti-MS4A1 antibody (Cat#5272). Total cell lysates (30 µg) from various cell lines were loaded and separated by SDS-PAGE. The blot was incubated with anti-MS4A1 antibody (Cat#5272, 1:2,000) and HRP-conjugated goat anti-mouse secondary antibody (Cat#101, 1:20,000) respectively. Image was developed using NaQ™ ECL Substrate Kit (Cat#716).

## SUPPORT

SUPPORT@GENUINBIOTECH.COM  
TEL: +1-540-855-7041

## ORDERS

SALES@GENUINBIOTECH.COM  
FAX: +1-540-855-7041

WWW.GENUINBIOTECH.COM