

Catalog #: 52722

Aliases

POLE3; DNA Polymerase Epsilon 3, Accessory Subunit; CHRAC17; CHARAC17; CHRAC2; Ybl1; P17; Polymerase (DNA Directed), Epsilon 3 (P17 Subunit); Chromatin Accessibility Complex 17 KDa Protein; Polymerase (DNA) Epsilon 3, Accessory Subunit; Chromatin Accessibility Complex Subunit 2; DNA Polymerase Epsilon P17 Subunit; DNA Polymerase Epsilon Subunit P17; DNA Polymerase Epsilon Subunit 3; Arsenic Transactivated Protein; Histone Fold Protein CHRAC17; DNA Polymerase II Subunit 3; HuCHRAC17; CHRAC-17; AsTP; Polymerase (DNA Directed), Epsilon 3, Accessory Subunit; Chromatin Accessibility Complex 17; Arsenic-Transactivated Protein; EC 2.7.7.7

Background

Gene Name: POLE3

NCBI Gene Entry: [54107](#)

UniProt Entry: [Q9NRF9](#)

Application Information

Molecular Weight: Predicted, 17 kDa; observed, 16 kDa

Clonality: Rabbit polyclonal antibody

Species Reactivity: Human, mouse, rat

Applications Tested: Western blotting (WB)

Immunogen

A synthesized peptide derived from human POLE3

Isotype

Rabbit IgG

Storage Buffer

Supplied in PBS containing 50% glycerol, 0.5% BSA and 0.02% sodium azide.

Storage

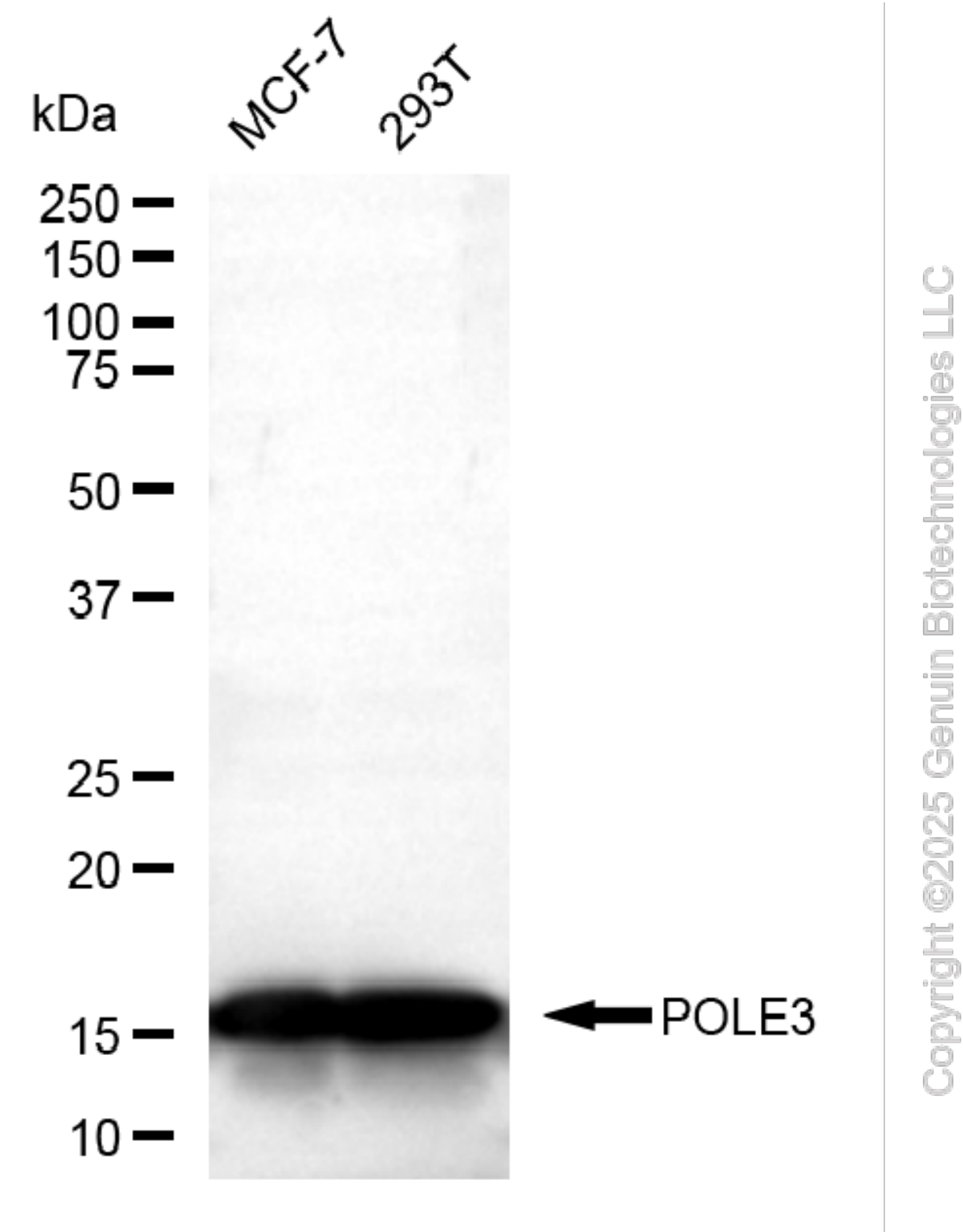
Store at -20 °C for one year.

Recommended Dilutions

Western Blotting (WB): 1:500-1:2,500

Note: This product is for research use only.

Validation Data



Western blotting analysis using anti-POLE3 antibody (Cat#52722). Total lysates (30 µg) were

SUPPORT

SUPPORT@GENUINBIOTECH.COM
TEL: +1-540-855-7041

ORDERS

SALES@GENUINBIOTECH.COM
FAX: +1-540-855-7041

WWW.GENUINBIOTECH.COM

loaded and separated by SDS-PAGE. The blot was incubated with anti-POLE3 antibody (Cat#52722, 1:2,500) and HRP-conjugated goat anti-rabbit secondary antibody (Cat#201, 1:20,000) respectively. Image was developed using FeQ™ ECL Substrate Kit (Cat#226).