

Catalog #: 52723

Aliases

CGAS; Cyclic GMP-AMP Synthase; H-CGAS; C6orf150; MB21D1; D4; Mab-21 Domain-Containing Protein 1; Mab-21 Domain Containing 1; DANGER Family Member 4; 2'3'-CGAMP Synthase; CGAMP Synthase; Chromosome 6 Open Reading Frame 150; Protein MB21D1; EC 2.7.7.86; CGAS

Background

Gene Name: CGAS

NCBI Gene Entry: [115004](#)

UniProt Entry: [Q8N884](#)

Application Information

Molecular Weight: Predicted, 59 kDa; observed, 50,59 kDa

Clonality: Rabbit polyclonal antibody

Species Reactivity: Human, mouse

Applications Tested: Western blotting (WB)

Immunogen

A synthesized peptide derived from human CGAS

Isotype

Rabbit IgG

Storage Buffer

Supplied in PBS containing 50% glycerol, 0.5% BSA and 0.02% sodium azide.

Storage

Store at -20 °C for one year.

Recommended Dilutions

Western Blotting (WB): 1:500-1:2,500

Note: This product is for research use only.

Validation Data

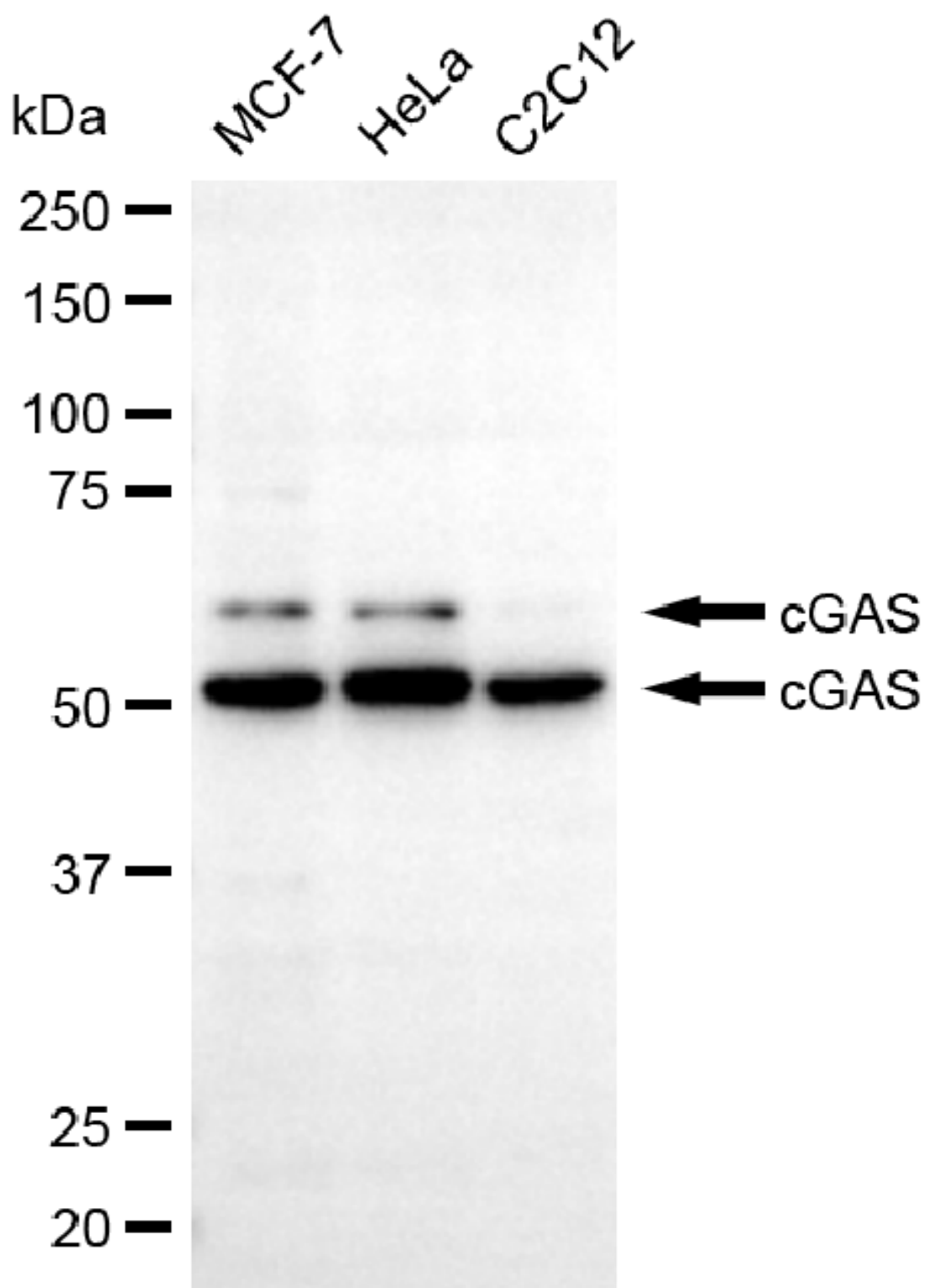
SUPPORT

SUPPORT@GENUINBIOTECH.COM
TEL: +1-540-855-7041

ORDERS

SALES@GENUINBIOTECH.COM
FAX: +1-540-855-7041

WWW.GENUINBIOTECH.COM



Copyright ©2025 Genuin Biotechnologies LLC

Western blotting analysis using anti-CGAS antibody (Cat#52723). Total lysates (30 µg) were

SUPPORT

SUPPORT@GENUINBIOTECH.COM
TEL: +1-540-855-7041

ORDERS

SALES@GENUINBIOTECH.COM
FAX: +1-540-855-7041

WWW.GENUINBIOTECH.COM

loaded and separated by SDS-PAGE. The blot was incubated with anti-CGAS antibody (Cat#52723, 1:2,500) and HRP-conjugated goat anti-rabbit secondary antibody (Cat#201, 1:20,000) respectively. Image was developed using FeQ™ ECL Substrate Kit (Cat#226).