

Catalog #: 52729

Aliases

FAM20B; FAM20B Glycosaminoglycan Xylosylkinase; KIAA0475; GXK1; Family With Sequence Similarity 20, Member B; Glycosaminoglycan Xylosylkinase; Xylose Kinase; FAM20B, Glycosaminoglycan Xylosylkinase; EC 2.7.1.-

Background

Gene Name: FAM20B

NCBI Gene Entry: [9917](#)

UniProt Entry: [O75063](#)

Application Information

Molecular Weight: Predicted, 46 kDa; observed, 45 kDa

Clonality: Rabbit polyclonal antibody

Species Reactivity: Human, mouse

Applications Tested: Western blotting (WB)

Immunogen

A synthesized peptide derived from human XYLK

Isotype

Rabbit IgG

Storage Buffer

Supplied in PBS containing 50% glycerol, 0.5% BSA and 0.02% sodium azide.

Storage

Store at -20 °C for one year.

Recommended Dilutions

Western Blotting (WB): 1:500-1:2,500

Note: This product is for research use only.

Validation Data

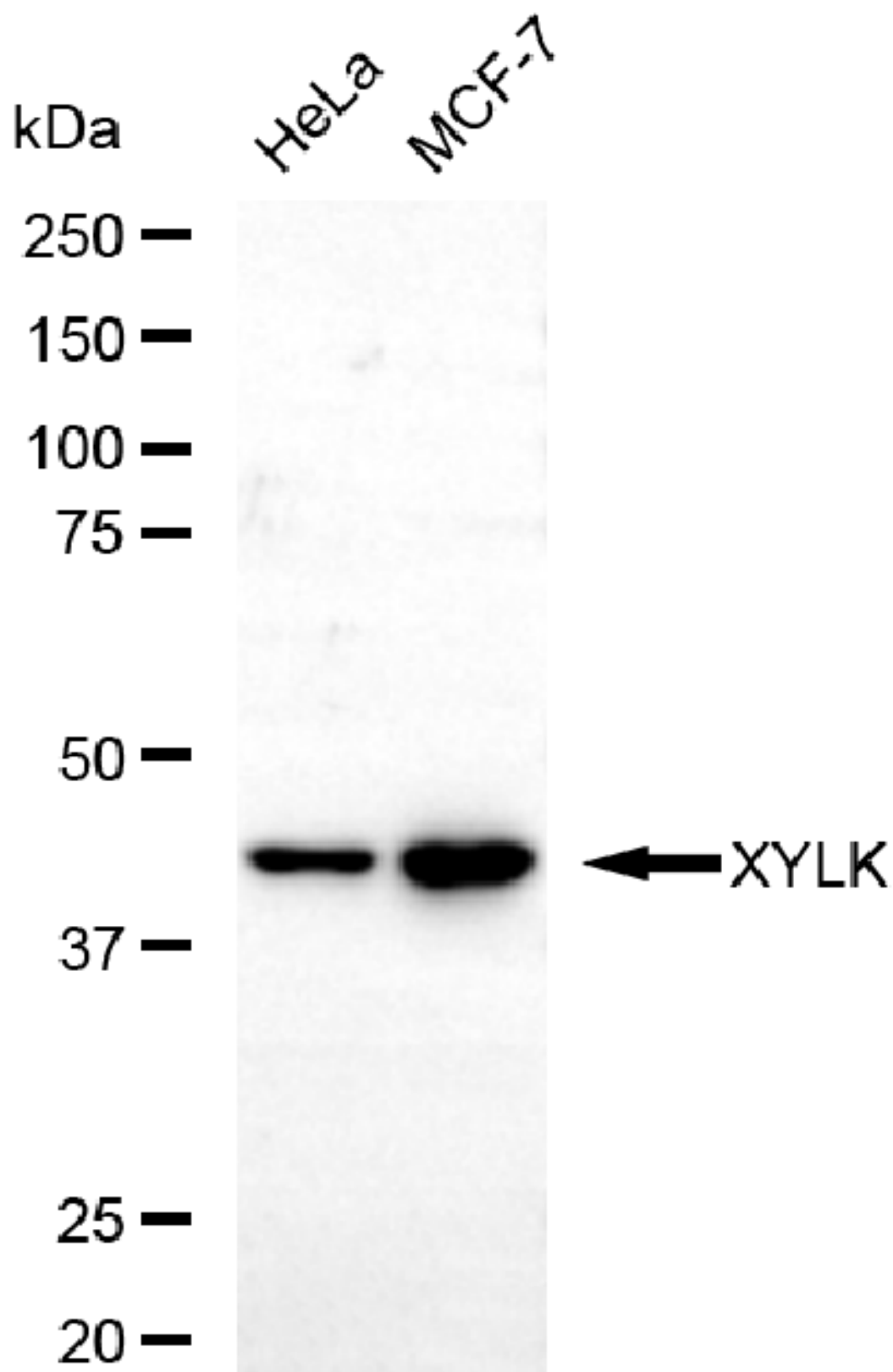
SUPPORT

SUPPORT@GENUINBIOTECH.COM
TEL: +1-540-855-7041

ORDERS

SALES@GENUINBIOTECH.COM
FAX: +1-540-855-7041

WWW.GENUINBIOTECH.COM



Copyright ©2025 Genuin Biotechnologies LLC

SUPPORT

SUPPORT@GENUINBIOTECH.COM
TEL: +1-540-855-7041

ORDERS

SALES@GENUINBIOTECH.COM
FAX: +1-540-855-7041

WWW.GENUINBIOTECH.COM

Western blotting analysis using anti-XYLK antibody (Cat#52729). Total lysates (30 µg) were loaded and separated by SDS-PAGE. The blot was incubated with anti-XYLK antibody (Cat#52729, 1:2,500) and HRP-conjugated goat anti-rabbit secondary antibody (Cat#201, 1:20,000) respectively. Image was developed using FeQ™ ECL Substrate Kit (Cat#226).