

Anti-Actin Alpha Cardiac Muscle 1 Rabbit Polyclonal Antibody



Catalog #: 52734

Aliases

ACTC1; Actin Alpha Cardiac Muscle 1; CMD1R; ACTC; Actin, Alpha Cardiac Muscle 1; Actin, Alpha, Cardiac Muscle; Alpha-Cardiac Actin; EC 3.6.4.-; CMH11; LVNC4; ASD5

Background

Gene Name: ACTC1

NCBI Gene Entry: [70](#)

UniProt Entry: [P68032](#)

Application Information

Molecular Weight: Predicted, 42 kDa; observed, 42 kDa

Clonality: Rabbit polyclonal antibody

Species Reactivity: Human, mouse, rat

Applications Tested: Western blotting (WB), immunohistochemistry (IHC), immunocytochemistry (IC)

Immunogen

A synthesized peptide derived from Actin Alpha Cardiac Muscle 1

Isotype

Rabbit IgG

Storage Buffer

Supplied in PBS containing 50% glycerol, 0.5% BSA and 0.02% sodium azide.

Storage

Store at -20 °C for one year.

Recommended Dilutions

Western Blotting (WB): 1:500-1:2,000

Immunohistochemistry (IHC): 1:100-1:300

Immunocytochemistry (IC): 1:50-1:200

Note: This product is for research use only.

Validation Data

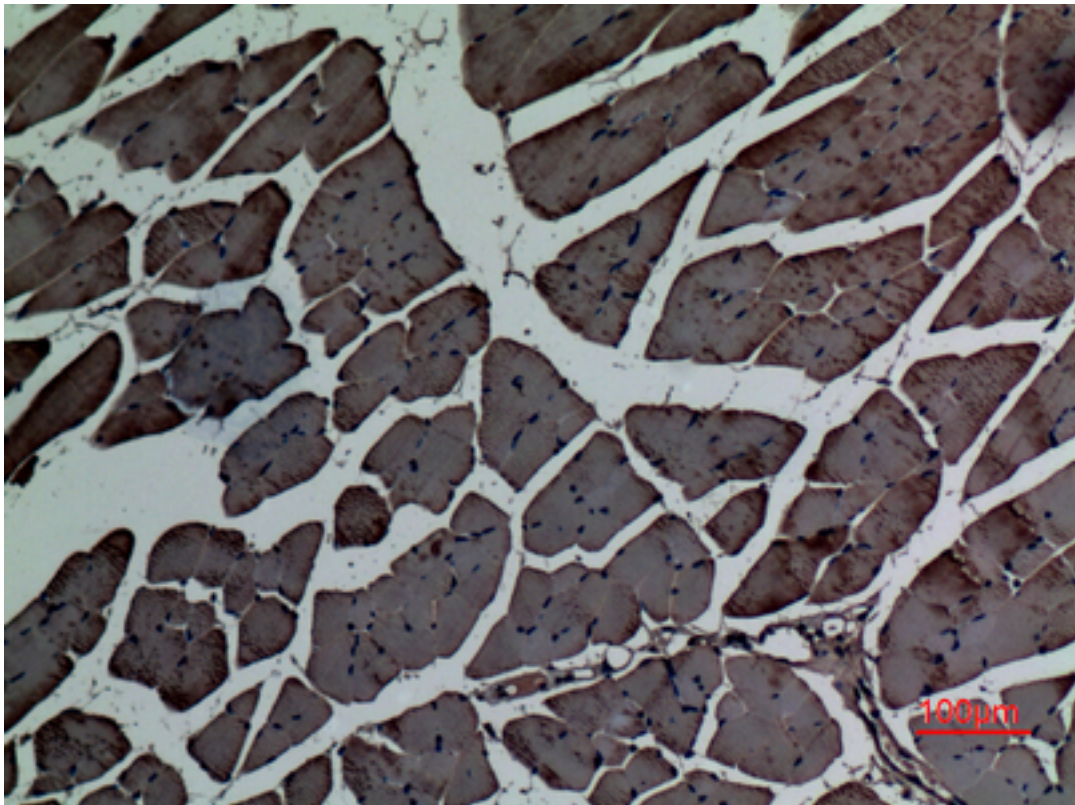
SUPPORT

SUPPORT@GENUINBIOTECH.COM
TEL: +1-540-855-7041

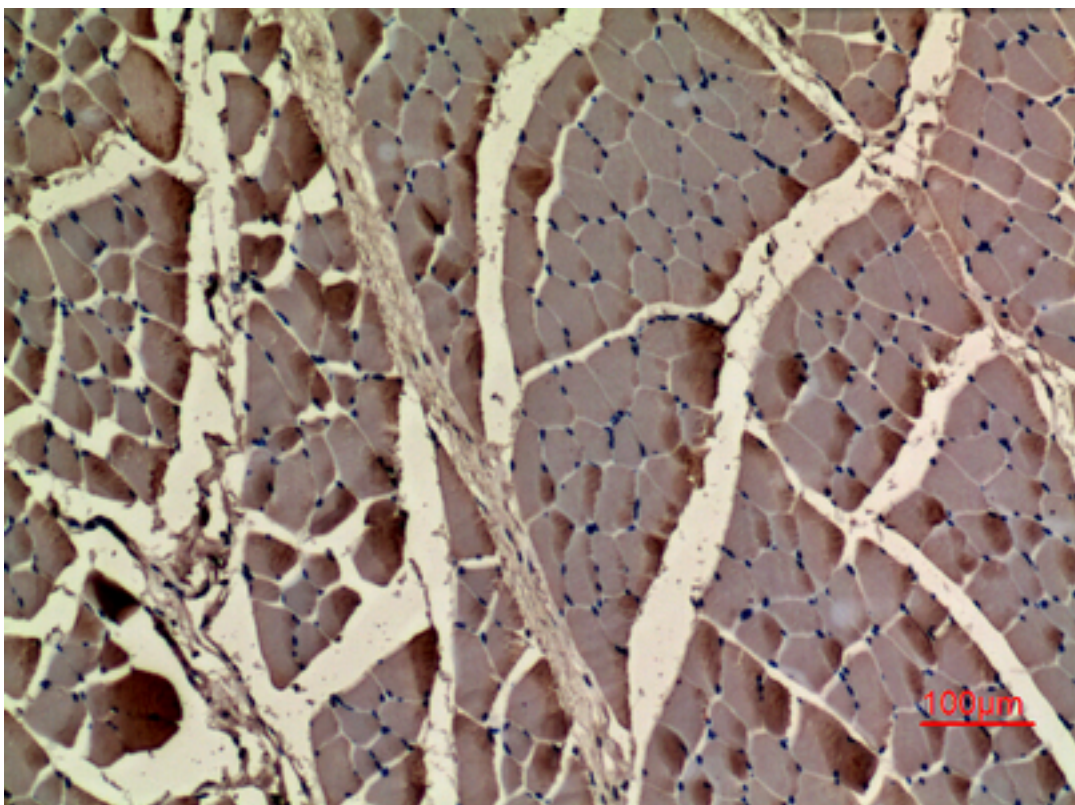
ORDERS

SALES@GENUINBIOTECH.COM
FAX: +1-540-855-7041

WWW.GENUINBIOTECH.COM



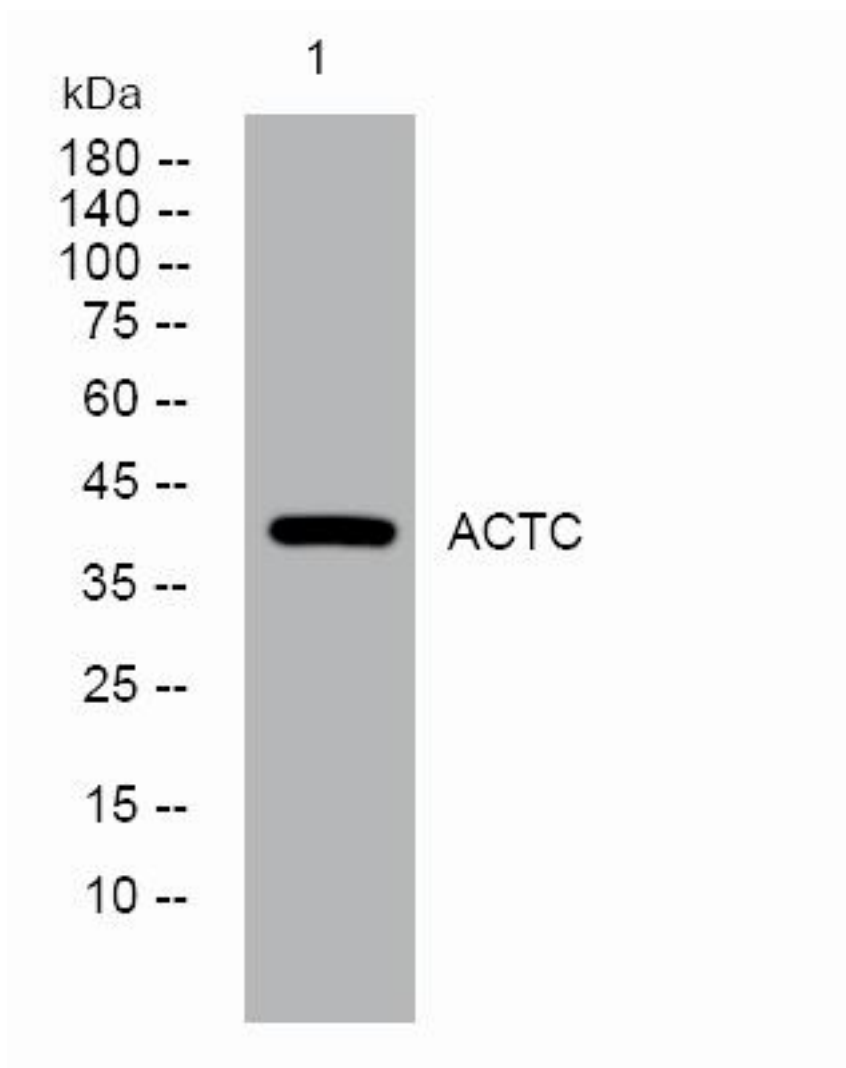
Immunohistochemical analysis of paraffin-embedded mouse-muscle, antibody was diluted at 1:100.



Anti-Actin Alpha Cardiac Muscle 1 Rabbit Polyclonal Antibody

PAGE 3

Immunohistochemical analysis of paraffin-embedded rat-muscle, antibody was diluted at 1:100.



Western blotting analysis of lysates from A431 cells, primary antibody was diluted at 1:1,000, 4°over night.

SUPPORT

SUPPORT@GENUINBIOTECH.COM
TEL: +1-540-855-7041

ORDERS

SALES@GENUINBIOTECH.COM
FAX: +1-540-855-7041

WWW.GENUINBIOTECH.COM