

Catalog #: 5274

Aliases

FTL; Ferritin Light Chain; Ferritin L Subunit; NBIA3; FTL1; Ferritin Light Polypeptide-Like 3; Ferritin, Light Polypeptide; Ferritin L-Chain; MGC71996; Neurodegeneration With Brain Iron Accumulation 3; Epididymis Secretory Sperm Binding Protein; L Apoferritin; LFTD

Background

Gene Name: FTL

NCBI Gene Entry: [2512](#)

UniProt Entry: [P02792](#)

Application Information

Molecular Weight: Predicted, 20 kDa; observed, 20 kDa

Clonality: Mouse monoclonal antibody

Clone ID: 25GB695

Species Reactivity: Human, mouse, rat

Applications Tested: Western blotting (WB), flow cytometry (FCM)

Immunogen

Recombinant protein of human FTL

Isotype

Mouse IgG1

Storage Buffer

Supplied in PBS (pH 7.4) containing 50% glycerol, and 0.02% sodium azide.

Storage

Store at -20 °C for one year.

Recommended Dilutions

Western Blotting (WB): 1:400-1:2,000

Flow Cytometry (FCM): 1:2,000

Note: This product is for research use only.

Validation Data

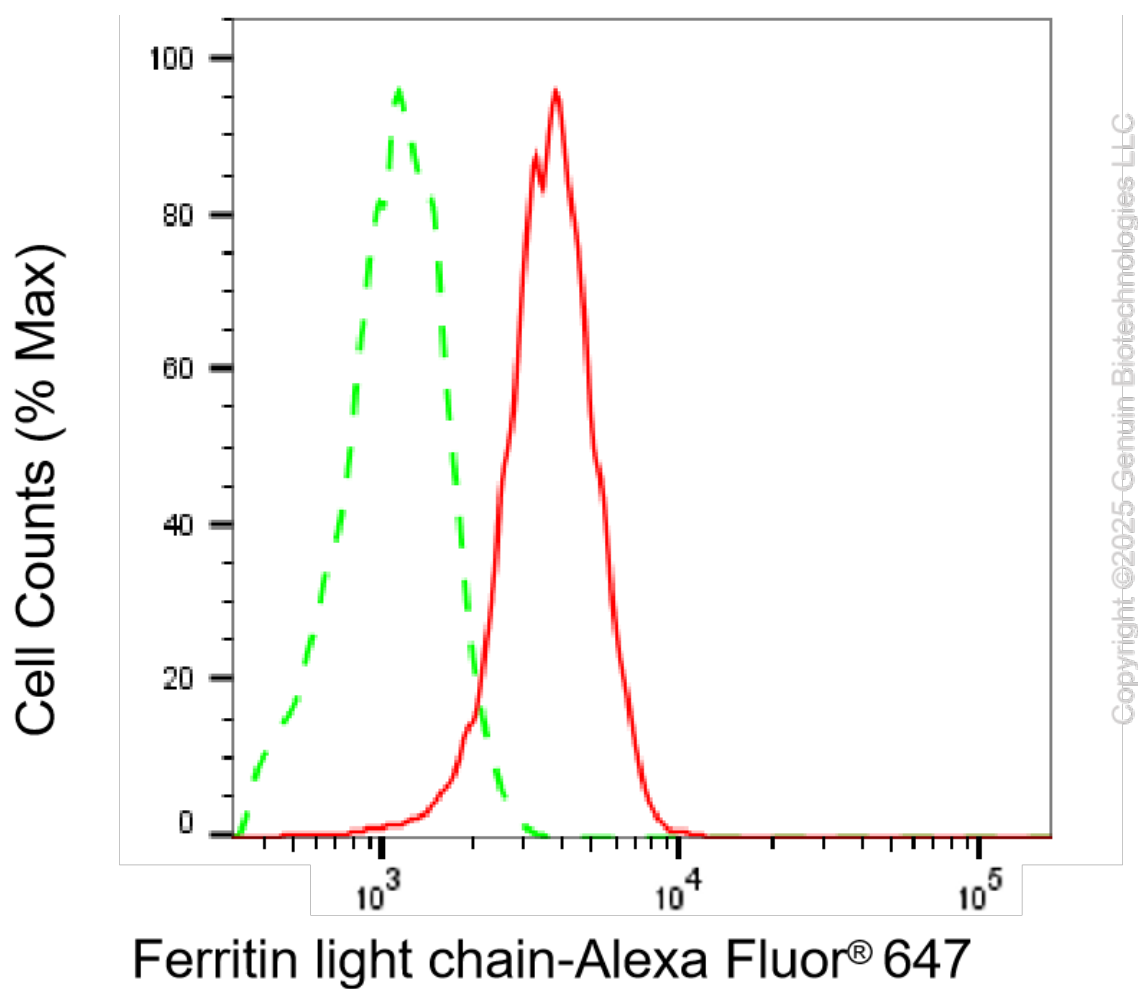
SUPPORT

SUPPORT@GENUINBIOTECH.COM
TEL: +1-540-855-7041

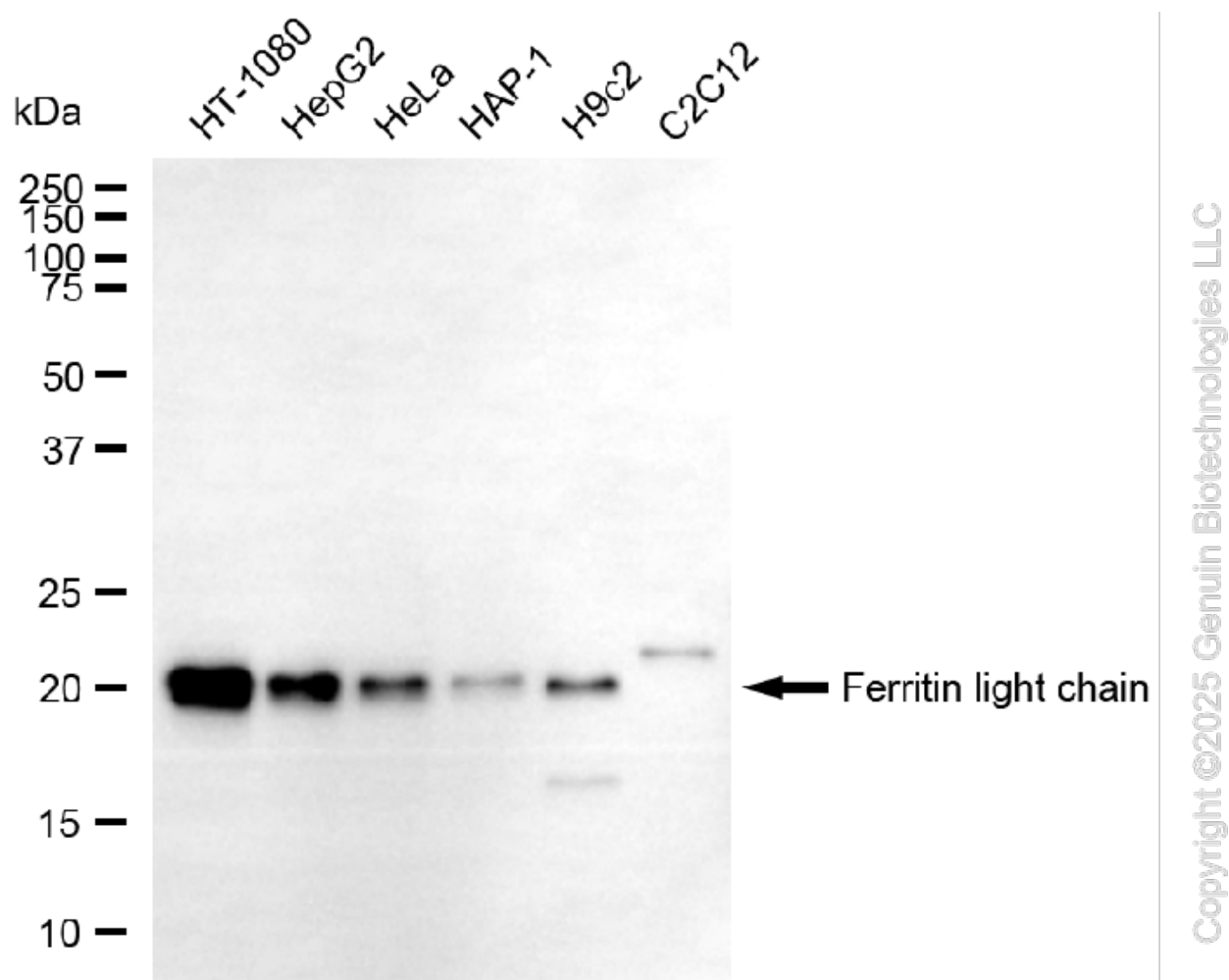
ORDERS

SALES@GENUINBIOTECH.COM
FAX: +1-540-855-7041

WWW.GENUINBIOTECH.COM



Flow cytometric analysis of Ferritin light chain expression in HepG2 cells using anti-Ferritin light chain antibody (Cat#5274, 1:2,000). Green, isotype control; red, Ferritin light chain.



Western blotting analysis using anti-ferritin light chain antibody (Cat#5274). Total cell lysates (30 μ g) from various cell lines were loaded and separated by SDS-PAGE. The blot was incubated with anti-ferritin light chain antibody (Cat#5274, 1:2,000) and HRP-conjugated goat anti-mouse secondary antibody (Cat#101, 1:20,000) respectively. Image was developed using FeQ™ ECL Substrate Kit (Cat#226).

SUPPORT

SUPPORT@GENUINBIOTECH.COM
TEL: +1-540-855-7041

ORDERS

SALES@GENUINBIOTECH.COM
FAX: +1-540-855-7041

WWW.GENUINBIOTECH.COM