

Catalog #: 52743

Aliases

CR2; Complement C3d Receptor 2; C3DR; CD21; Complement Component (3d/Epstein Barr Virus) Receptor 2; Complement Component 3d Receptor 2; Epstein-Barr Virus Receptor 2; Complement Receptor Type 2; EBV Receptor; Complement C3d Receptor; CD21 Antigen; CVID7; SLEB9; Cr2; CR

Background

Gene Name: CR2

NCBI Gene Entry: [1380](#)

UniProt Entry: [P20023](#)

Application Information

Molecular Weight: Predicted, 113 kDa; observed, 155 kDa

Clonality: Rabbit monoclonal antibody

Clone ID: 25GB6920

Species Reactivity: Human, mouse, rat

Applications Tested: Western blotting (WB), immunohistochemistry (IHC), immunocytochemistry (IC)

Isotype

Rabbit IgG,Kappa

Storage Buffer

Supplied in PBS containing 50% glycerol, 0.05% Proclin 300 and 0.05%BSA.

Storage

Store at -20 °C for one year.

Recommended Dilutions

Western Blotting (WB): 1:1,000-1:5,000

Immunohistochemistry (IHC): 1:1,000-1:4,000

Immunocytochemistry (IC): 1:200-1:1,000

Note: This product is for research use only.

Validation Data

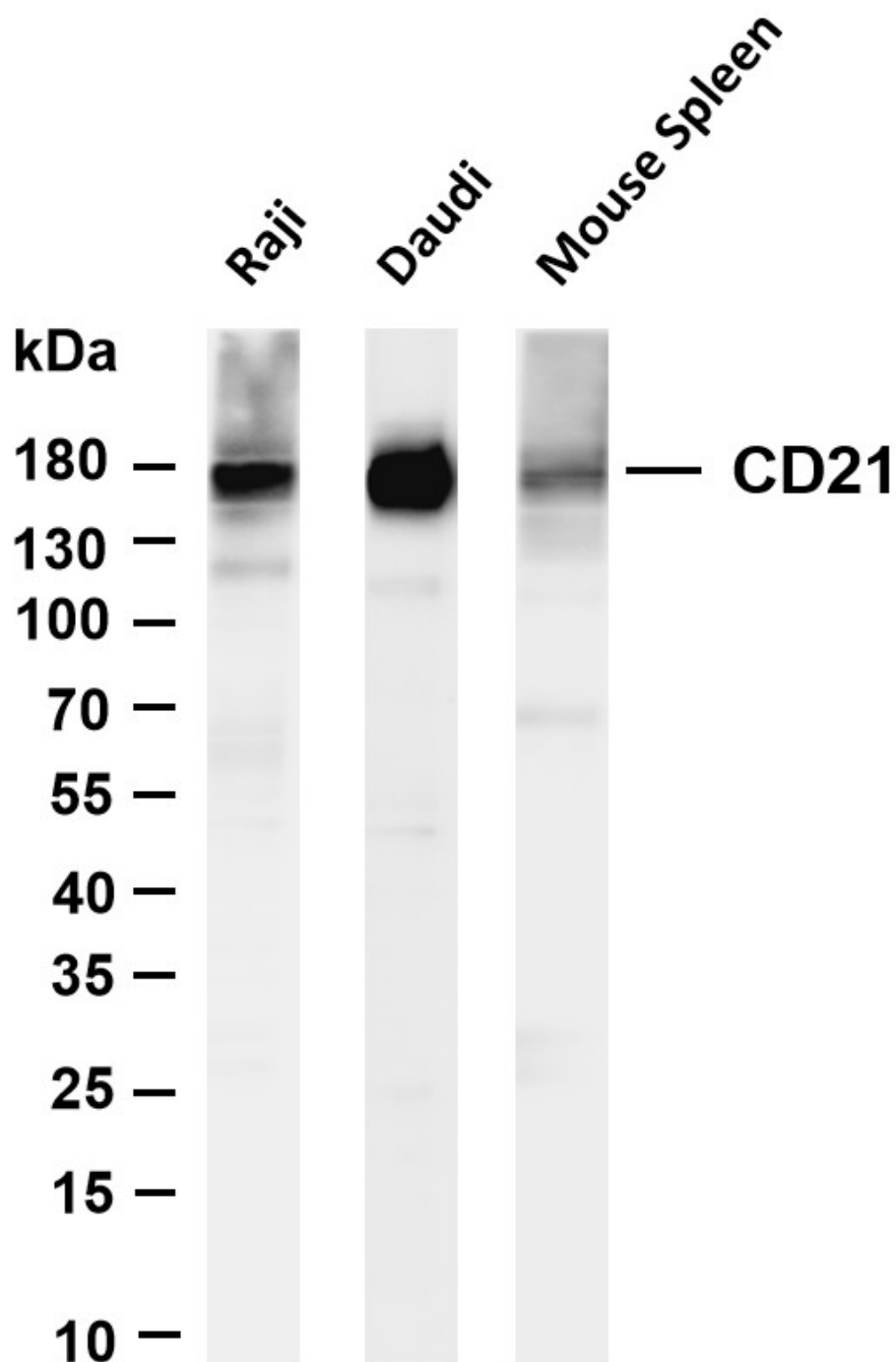
SUPPORT

SUPPORT@GENUINBIOTECH.COM
TEL: +1-540-855-7041

ORDERS

SALES@GENUINBIOTECH.COM
FAX:+1-540-855-7041

WWW.GENUINBIOTECH.COM



Western blotting analysis using anti-CD21 antibody (Cat#52743). Total lysates were loaded and separated by SDS-PAGE. The blot was incubated with anti-CD21 antibody (Cat#52743, 1:1,000) and HRP-conjugated goat anti-rabbit secondary antibody respectively.

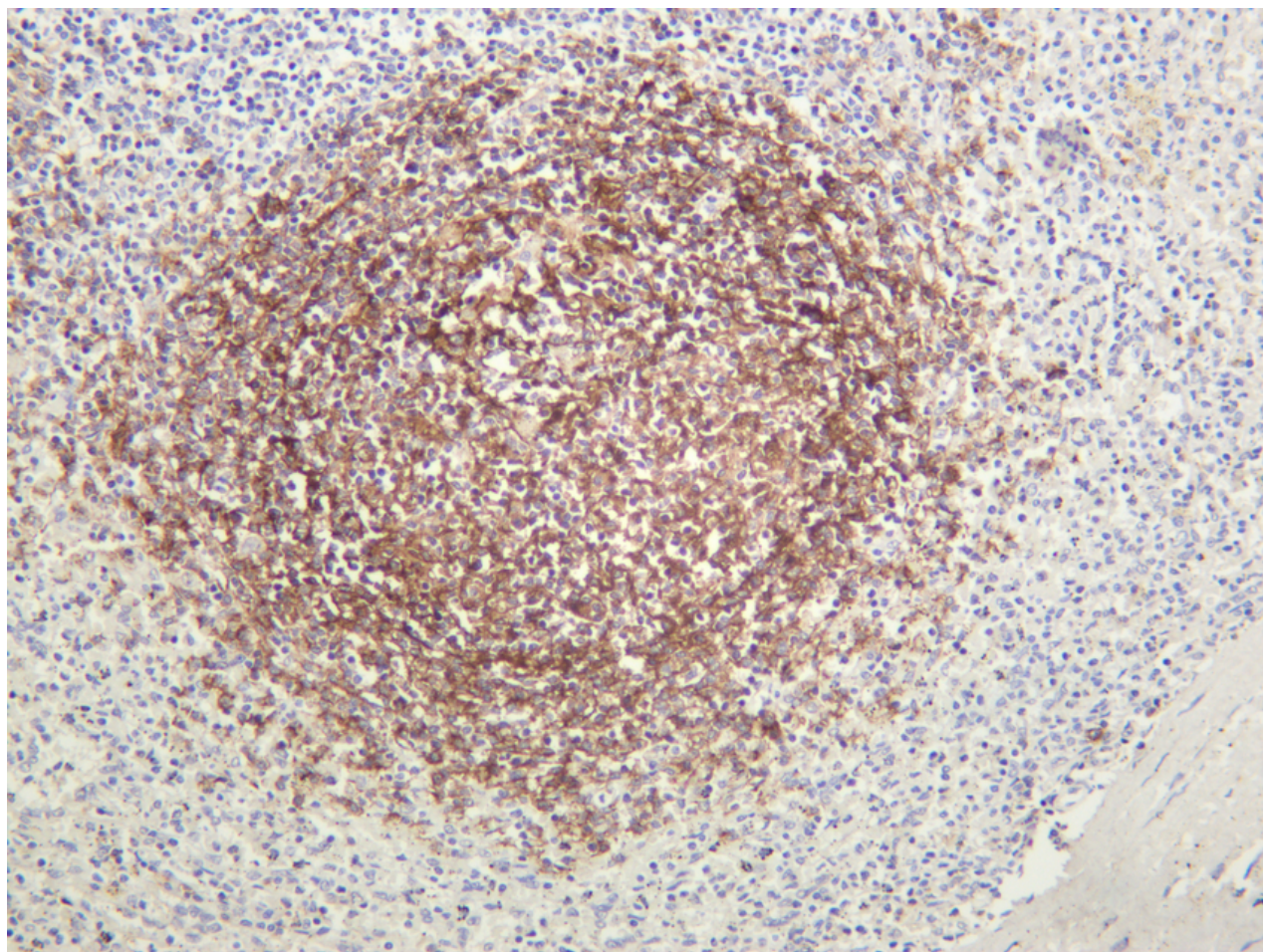
SUPPORT

SUPPORT@GENUINBIOTECH.COM
TEL: +1-540-855-7041

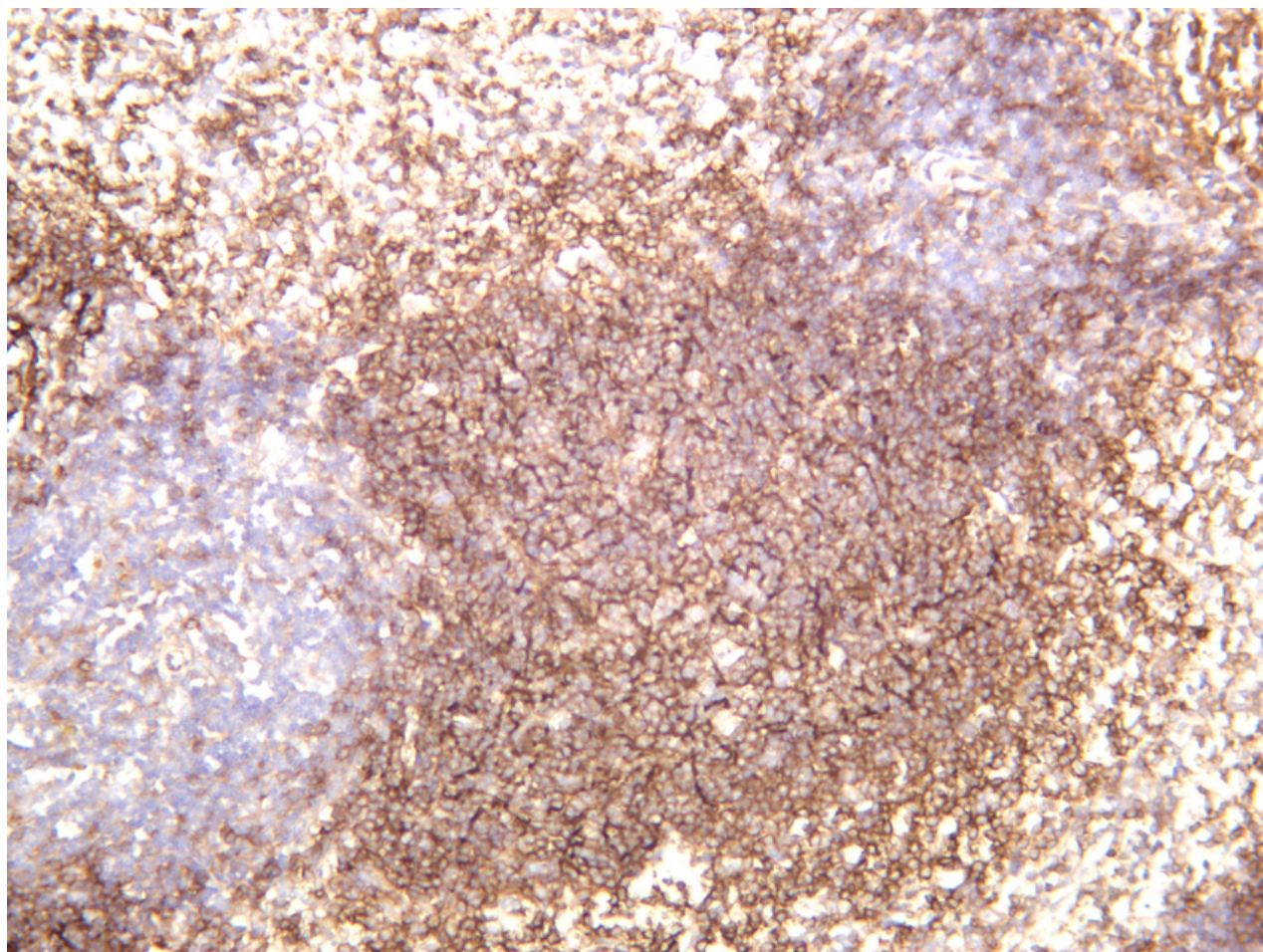
ORDERS

SALES@GENUINBIOTECH.COM
FAX: +1-540-855-7041

WWW.GENUINBIOTECH.COM



Human spleen was stained with anti-CD21 antibody.



Mouse spleen was stained with anti-CD21 antibody.