

Catalog #: 52744

Aliases

BCL6; BCL6 Transcription Repressor; ZBTB27; LAZ3; BCL5; Zinc Finger Protein 51; BCL6A; ZNF51; Zinc Finger And BTB Domain-Containing Protein 27; B-Cell Lymphoma 6 Protein; B-Cell Lymphoma 5 Protein; B Cell CLL/Lymphoma 6; Protein LAZ-3; BCL-5; BCL-6; Lymphoma-Associated Zinc Finger Gene On Chromosome 3; Cys-His2 Zinc Finger Transcription Factor; Zinc Finger Transcription Factor BCL6S; B-Cell Lymphoma 6 Protein Transcript; BCL6, Transcription Repressor

Background

Gene Name: BCL6

NCBI Gene Entry: [604](#)

UniProt Entry: [P41182](#)

Application Information

Molecular Weight: Predicted, 79 kDa; observed, 90 kDa

Clonality: Rabbit polyclonal antibody

Species Reactivity: Human, mouse, rat

Applications Tested: Western blotting (WB), immunohistochemistry (IHC), immunocytochemistry (IC)

Immunogen

A synthesized peptide derived from human Bcl-6

Isotype

Rabbit IgG

Storage Buffer

Supplied in PBS containing 50% glycerol, 0.5% BSA and 0.02% sodium azide.

Storage

Store at -20 °C for one year.

Recommended Dilutions

Western Blotting (WB): 1:500-1:2,000

Immunohistochemistry (IHC): 1:100-1:300

Immunocytochemistry (IC): 1:50-1:200

SUPPORT

SUPPORT@GENUINBIOTECH.COM
TEL: +1-540-855-7041

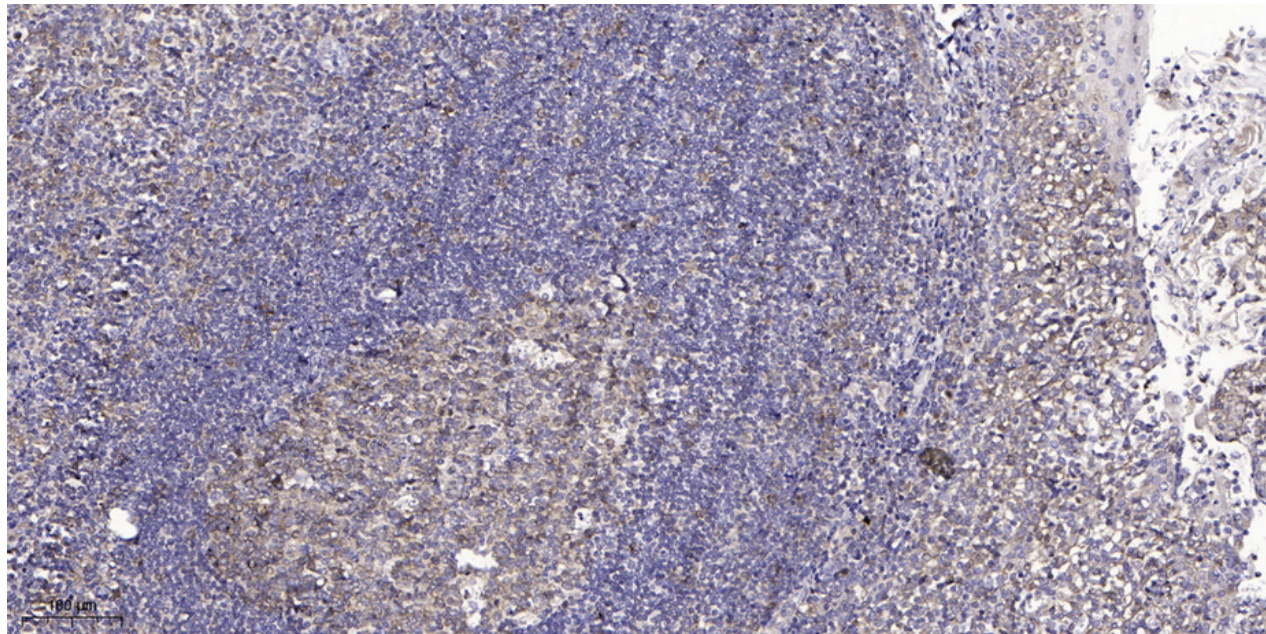
ORDERS

SALES@GENUINBIOTECH.COM
FAX: +1-540-855-7041

WWW.GENUINBIOTECH.COM

Note: This product is for research use only.

Validation Data



Immunohistochemical analysis of paraffin-embedded human tonsil. Antibody was diluted at 1:200 (4° overnight). Tris-EDTA, pH9.0 was used for antigen retrieval. Secondary antibody was diluted at 1:200 (room temperature, 45min).

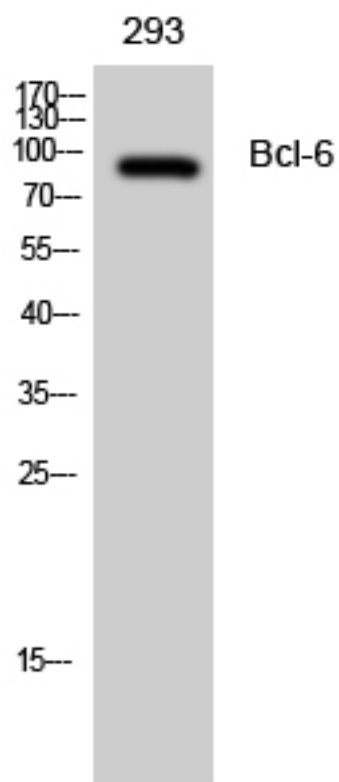
SUPPORT

SUPPORT@GENUINBIOTECH.COM
TEL: +1-540-855-7041

ORDERS

SALES@GENUINBIOTECH.COM
FAX: +1-540-855-7041

WWW.GENUINBIOTECH.COM



Western blotting analysis of 293 cells using Bcl-6 antibody.