

**Catalog #: 52745**

## Aliases

CD3D; CD3 Delta Subunit Of T-Cell Receptor Complex; T-Cell Surface Glycoprotein CD3 Delta Chain; CD3-DELTA; CD3DELTA; T3D; CD3d Antigen, Delta Polypeptide (TiT3 Complex); CD3d Molecule, Delta (CD3-TCR Complex); T-Cell Receptor T3 Delta Chain; CD3 Antigen, Delta Subunit; OKT3, Delta Chain; CD3d Molecule; CD3d Antigen; CD3 Delta; IMD19

## Background

Gene Name: CD3D

NCBI Gene Entry: [915](#)

UniProt Entry: [P04234](#)

## Application Information

Molecular Weight: Predicted, 19 kDa; observed, 18 kDa

Clonality: Rabbit polyclonal antibody

Species Reactivity: Human, mouse, rat

Applications Tested: Western blotting (WB), immunohistochemistry (IHC), immunocytochemistry (IC)

## Immunogen

A synthesized peptide derived from human CD3D

## Isotype

Rabbit IgG

## Storage Buffer

Supplied in PBS containing 50% glycerol, 0.5% BSA and 0.02% sodium azide.

## Storage

Store at -20 °C for one year.

## Recommended Dilutions

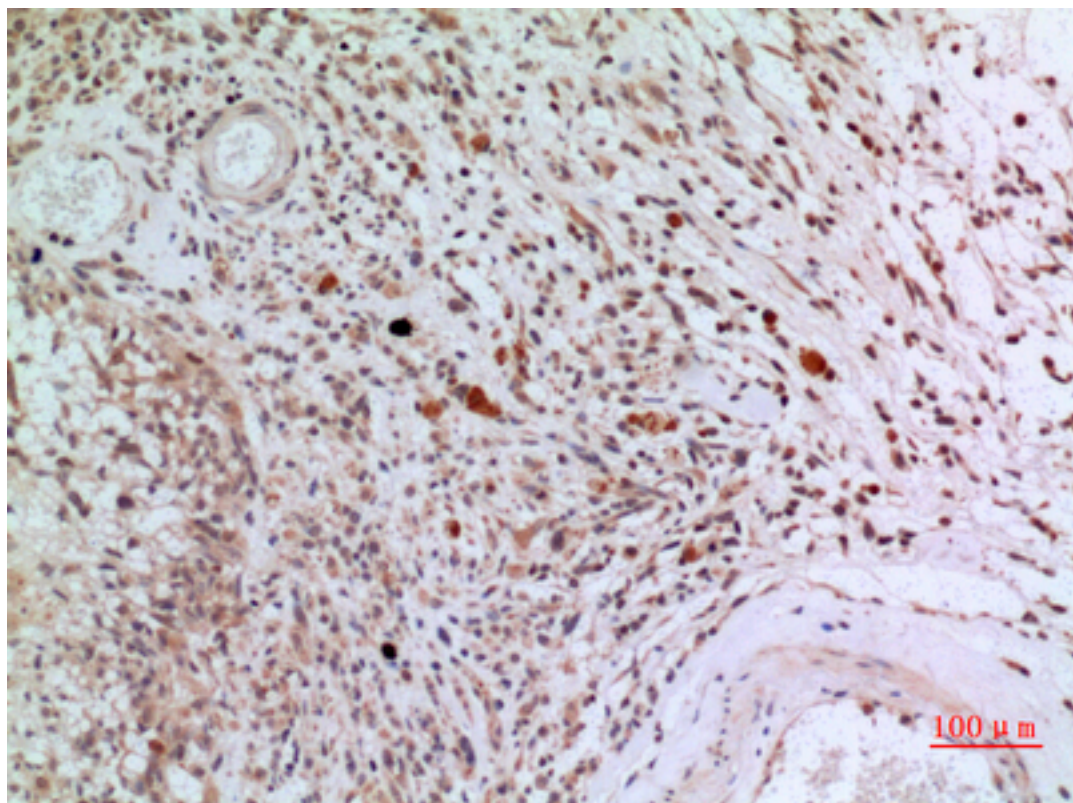
Western Blotting (WB): 1:500-1:2,000

Immunohistochemistry (IHC): 1:100-1:300

Immunocytochemistry (IC): 1:50-1:200

**Note:** This product is for research use only.

## Validation Data



Immunohistochemical analysis of paraffin-embedded human-brain, antibody was diluted at 1:100.



Western blotting analysis of HeLa cells using CD3D antibody. Secondary antibody was diluted at 1:20,000.

### SUPPORT

SUPPORT@GENUINBIOTECH.COM  
TEL: +1-540-855-7041

### ORDERS

SALES@GENUINBIOTECH.COM  
FAX: +1-540-855-7041

[WWW.GENUINBIOTECH.COM](http://WWW.GENUINBIOTECH.COM)