

## Catalog #: 5276

### Aliases

LRRN1; Leucine Rich Repeat Neuronal 1; FIGLER3; Fibronectin Type III, Immunoglobulin And Leucine Rich Repeat Domains 3; Leucine-Rich Repeat Neuronal Protein 1; Neuronal Leucine-Rich Repeat Protein 1; NLRR-1; KIAA1497; NLRR1

### Background

Gene Name: LRRN1

NCBI Gene Entry: [57633](#)

UniProt Entry: [Q6UXK5](#)

### Application Information

Molecular Weight: Predicted, 81 kDa; observed, 70 kDa

Clonality: Mouse monoclonal antibody

Clone ID: 25GB705

Species Reactivity: Human, mouse, rat

Applications Tested: Western blotting (WB), flow cytometry (FCM)

### Immunogen

Recombinant protein of human LRRN1

### Isotype

Mouse IgG1

### Storage Buffer

Supplied in PBS (pH 7.4) containing 50% glycerol, and 0.02% sodium azide.

### Storage

Store at -20 °C for one year.

### Recommended Dilutions

Western Blotting (WB): 1:400-1:2,000

Flow Cytometry (FCM): 1:2,000

**Note:** This product is for research use only.

### Validation Data

---

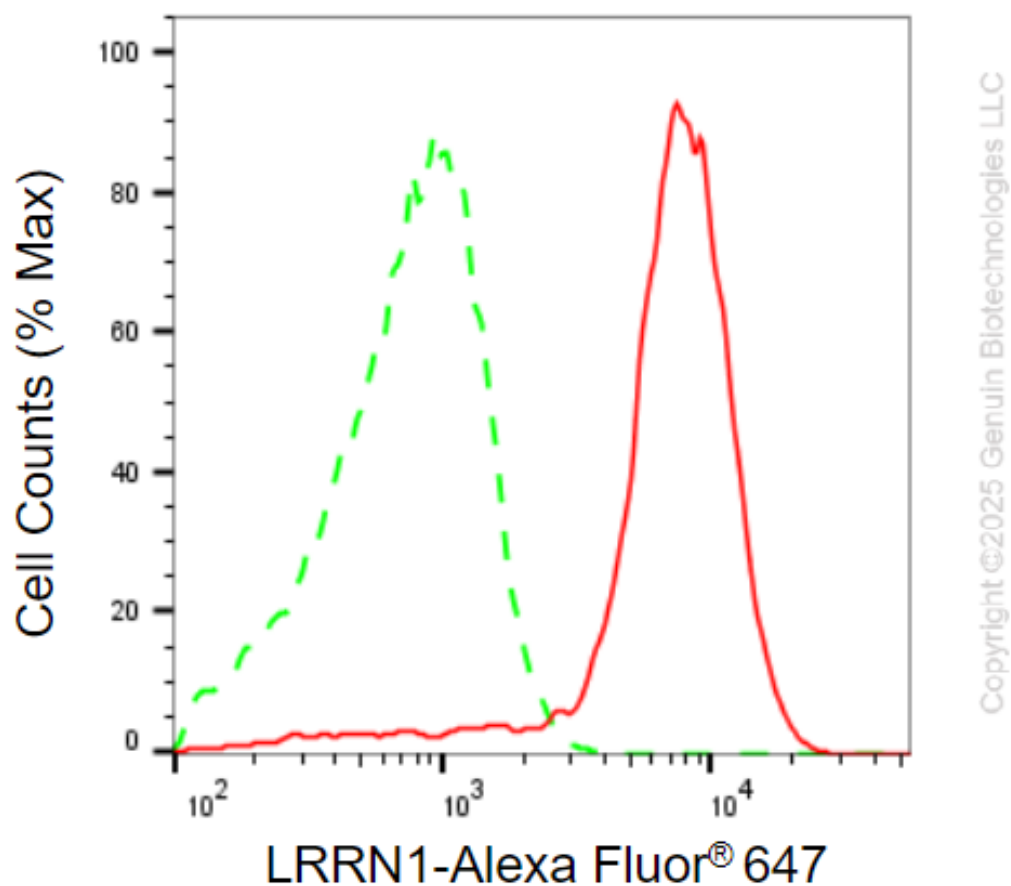
#### SUPPORT

SUPPORT@GENUINBIOTECH.COM  
TEL: +1-540-855-7041

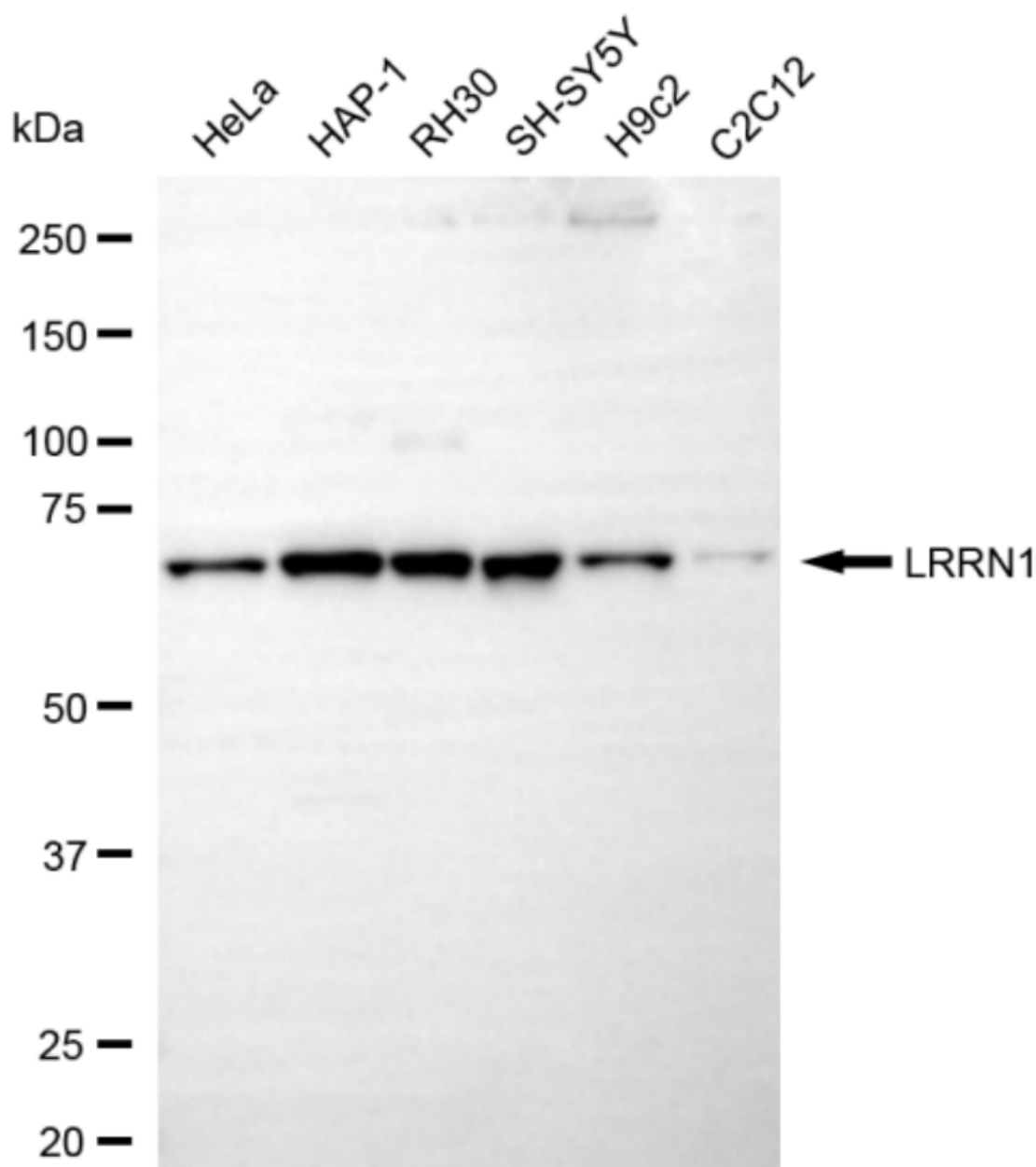
#### ORDERS

SALES@GENUINBIOTECH.COM  
FAX: +1-540-855-7041

[WWW.GENUINBIOTECH.COM](http://WWW.GENUINBIOTECH.COM)



Flow cytometric analysis of LRRN1 expression in HAP-1 cells using anti-LRRN1 antibody (Cat#5276, 1:2,000). Green, isotype control; red, LRRN1.



Copyright ©2025 Genuin Biotechnologies LLC

Western blotting analysis using anti-LRRN1 antibody (Cat#5276). Total cell lysates (30  $\mu$ g) from various cell lines were loaded and separated by SDS-PAGE. The blot was incubated with anti-LRRN1 antibody (Cat#5276, 1:2,000) and HRP-conjugated goat anti-mouse secondary antibody (Cat#101, 1:20,000) respectively. Image was developed using FeQ™ ECL Substrate Kit (Cat#226).

**SUPPORT**

SUPPORT@GENUINBIOTECH.COM  
TEL: +1-540-855-7041

**ORDERS**

SALES@GENUINBIOTECH.COM  
FAX: +1-540-855-7041

[WWW.GENUINBIOTECH.COM](http://WWW.GENUINBIOTECH.COM)