

Catalog #: 52772

Aliases

SERPINB5; Serpin Family B Member 5; Maspin; PI5; Serine (Or Cysteine) Proteinase Inhibitor, Clade B (Ovalbumin), Member 5; Serpin Peptidase Inhibitor, Clade B (Ovalbumin), Member 5; Protease Inhibitor 5 (Maspin); Peptidase Inhibitor 5; Serpin B5; PI-5

Background

Gene Name: SERPINB5

NCBI Gene Entry: [5268](#)

UniProt Entry: [P36952](#)

Application Information

Molecular Weight: Predicted, 42 kDa; observed, 40 kDa

Clonality: Mouse monoclonal antibody

Clone ID: 25GB6945

Species Reactivity: Human

Applications Tested: Western blotting (WB), immunohistochemistry (IHC), immunocytochemistry (IC)

Immunogen

A synthesized peptide derived from human Maspin

Isotype

Mouse IgG

Storage Buffer

Supplied in PBS containing 50% glycerol, 0.05% Proclin 300 and 0.05% BSA.

Storage

Store at -20 °C for one year.

Recommended Dilutions

Western Blotting (WB): 1:500-1:2,000

Immunohistochemistry (IHC): 1:200-1:1,000

Immunocytochemistry (IC): 1:100-1:500

SUPPORT

SUPPORT@GENUINBIOTECH.COM
TEL: +1-540-855-7041

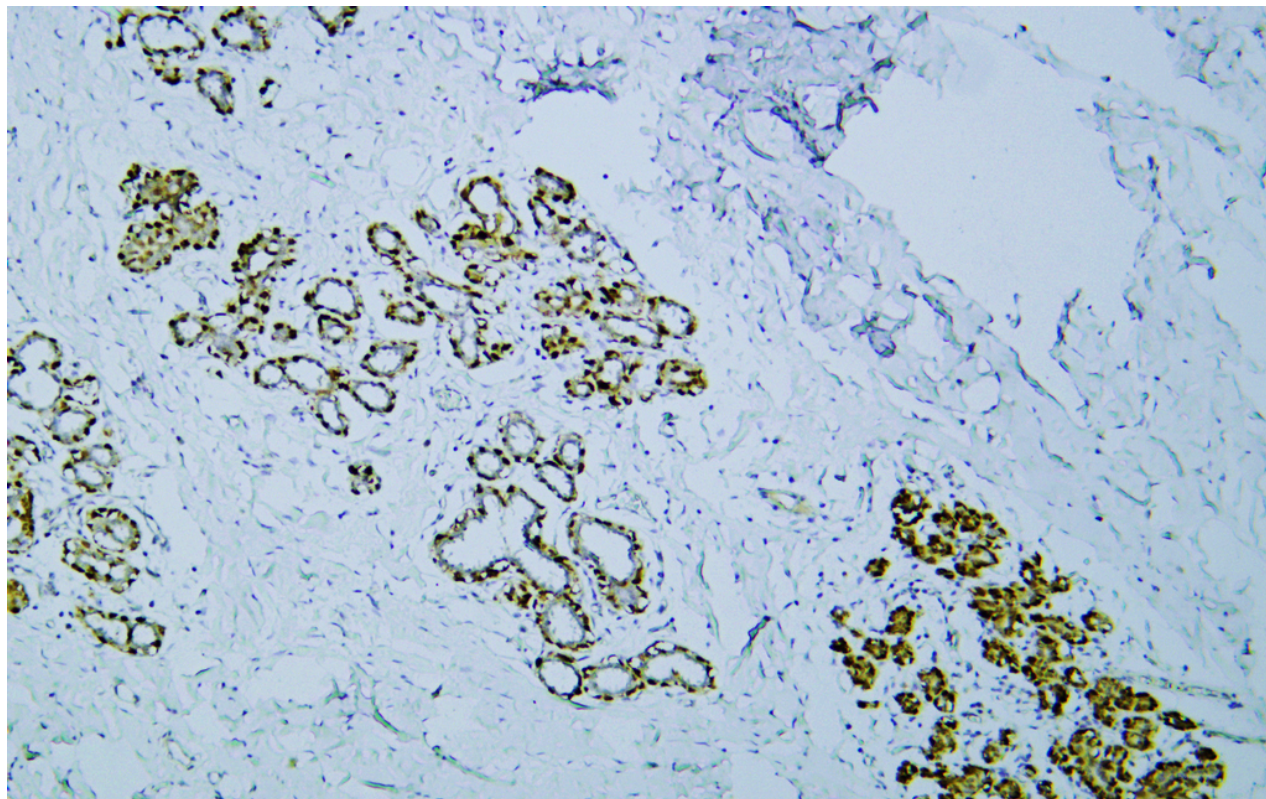
ORDERS

SALES@GENUINBIOTECH.COM
FAX: +1-540-855-7041

WWW.GENUINBIOTECH.COM

Note: This product is for research use only.

Validation Data



Immunohistochemical analysis of Human breast tissue was stained with anti-Maspin antibody.