

## Catalog #: 52774

### Aliases

NR4A2; Nuclear Receptor Subfamily 4 Group A Member 2; TINUR; NOT; HZF-3; NURR1; RNR1; Transcriptionally-Inducible Nuclear Receptor; Immediate-Early Response Protein NOT; Orphan Nuclear Receptor NURR1; Transcriptionally Inducible Nuclear Receptor Related 1; NGFI-B/Nur77 Beta-Type Transcription Factor Homolog; Nuclear Receptor Subfamily 4, Group A, Member 2; Nur Related Protein-1, Human Homolog Of; Intermediate-Early Receptor Protein; Orphan Nuclear Receptor NR4A2; T-Cell Nuclear Receptor NOT; Nuclear Receptor Related 1; IDLDP

### Background

Gene Name: NR4A2

NCBI Gene Entry: [4929](#)

UniProt Entry: [P43354](#)

### Application Information

Molecular Weight: Predicted, 67 kDa; observed, 67 kDa

Clonality: Rabbit polyclonal antibody

Species Reactivity: Human, mouse, rat

Applications Tested: Western blotting (WB), immunohistochemistry (IHC), immunocytochemistry (IC)

### Immunogen

A synthesized peptide derived from human NR4A2

### Isotype

Rabbit IgG

### Storage Buffer

Supplied in 0.01M TBS (pH7.4) containing 50% glycerol, 1% BSA and 0.02% Proclin300.

### Storage

Store at -20 °C for one year.

### Recommended Dilutions

Western Blotting (WB): 1:200-1:1,000

Immunohistochemistry (IHC): 1:100-1:500

---

#### SUPPORT

SUPPORT@GENUINBIOTECH.COM  
TEL: +1-540-855-7041

#### ORDERS

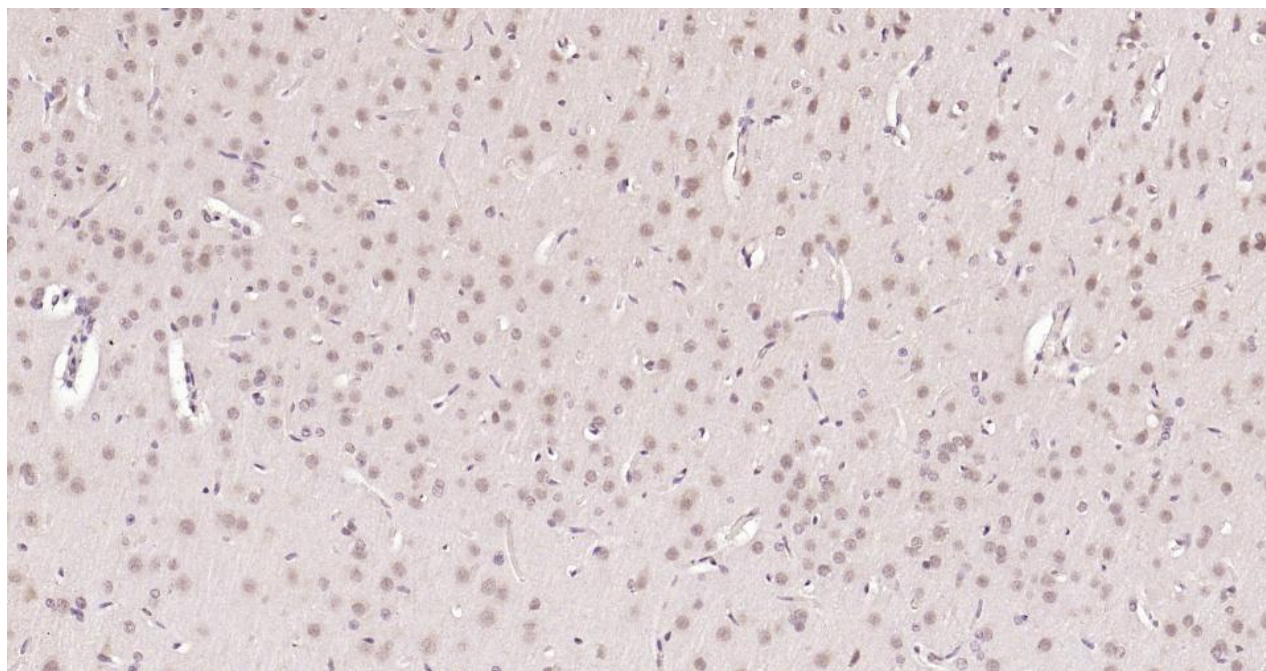
SALES@GENUINBIOTECH.COM  
FAX: +1-540-855-7041

[WWW.GENUINBIOTECH.COM](http://WWW.GENUINBIOTECH.COM)

Immunocytochemistry (IC): 1:100-1:500

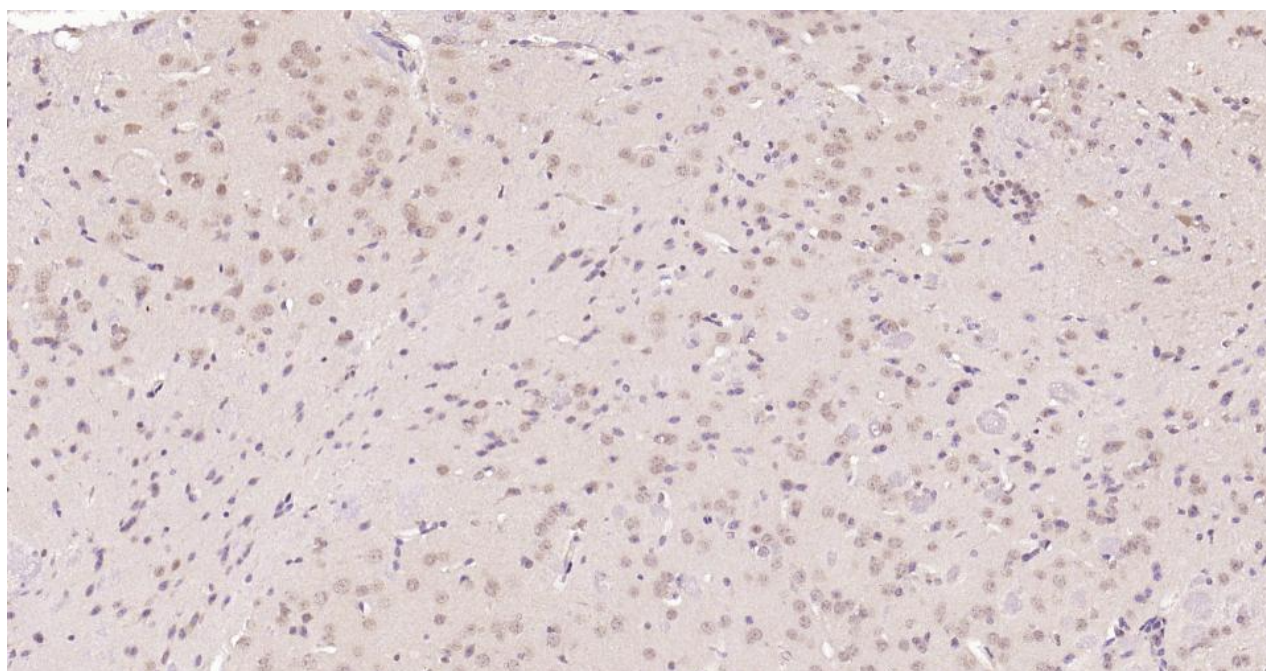
**Note:** This product is for research use only.

## Validation Data

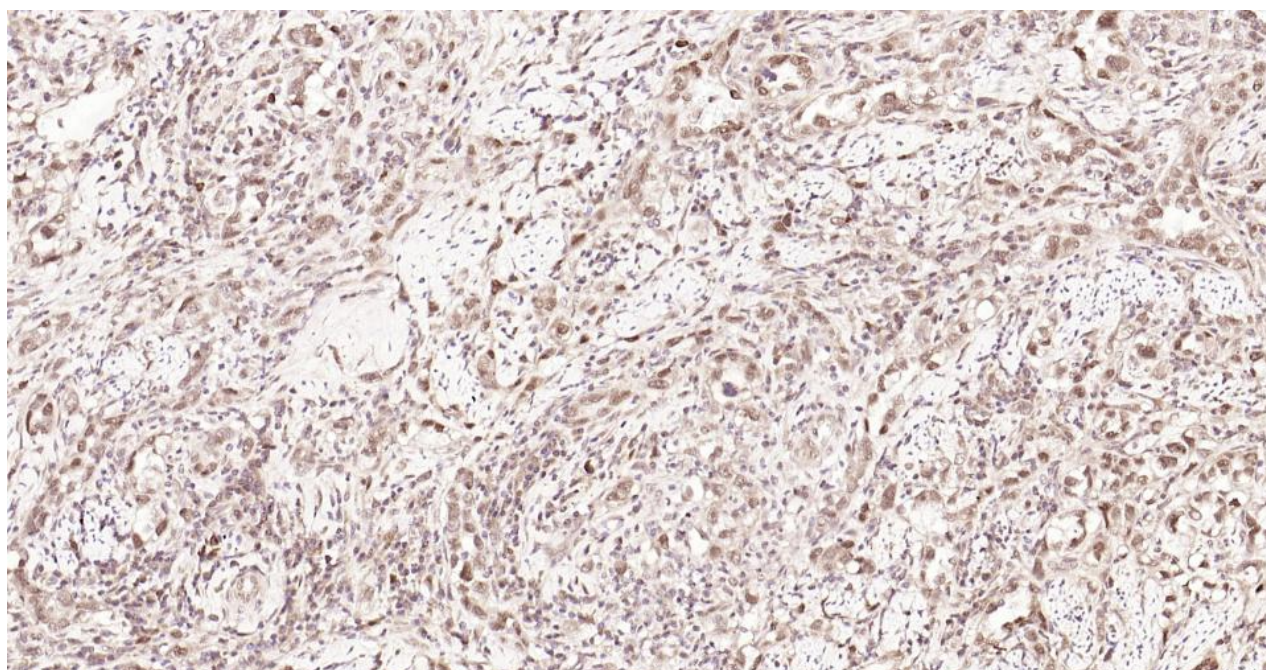


Immunohistochemical analysis of paraformaldehyde-fixed, paraffin embedded Rat Cerebrum; Antigen retrieval by boiling in sodium citrate buffer (pH6.0) for 15 min; Antibody incubation with NR4A2 antibody (Cat#52774, 1:200), overnight at 4°C, followed by conjugation to the SP Kit and DAB staining.





Immunohistochemical analysis of paraformaldehyde-fixed, paraffin embedded Mouse Cerebrum; Antigen retrieval by boiling in sodium citrate buffer (pH6.0) for 15 min; Antibody incubation with NR4A2 antibody (Cat#52774, 1:200), overnight at 4°C, followed by conjugation to the SP Kit and DAB staining.



Immunohistochemical analysis of paraformaldehyde-fixed, paraffin embedded Human Cervical Cancer; Antigen retrieval by boiling in sodium citrate buffer (pH6.0) for 15 min; Antibody incubation with NR4A2 antibody (Cat#52774, 1:200), overnight at 4°C, followed by conjugation to the SP Kit and DAB staining.

---

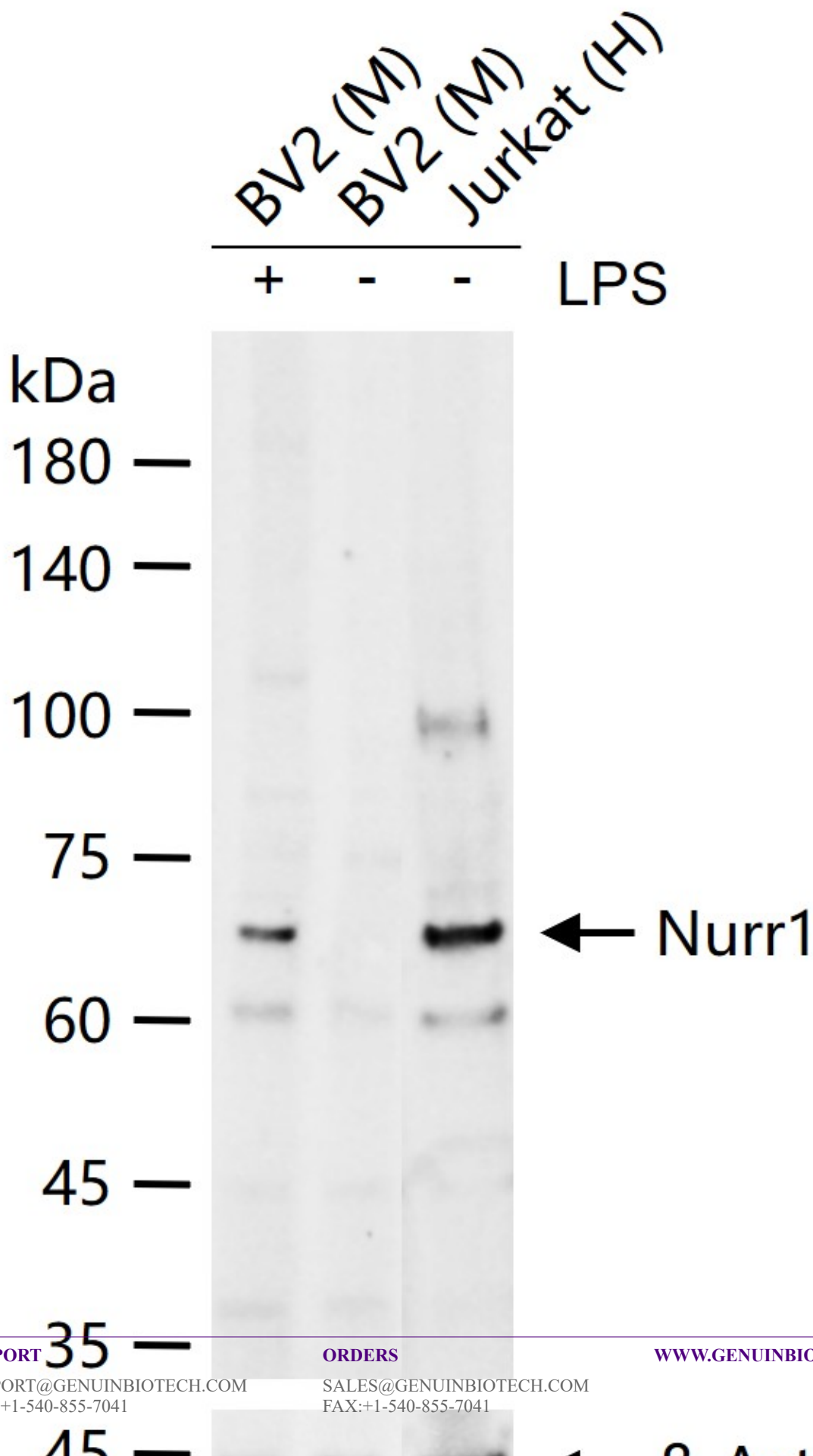
### SUPPORT

SUPPORT@GENUINBIOTECH.COM  
TEL: +1-540-855-7041

### ORDERS

SALES@GENUINBIOTECH.COM  
FAX: +1-540-855-7041

[WWW.GENUINBIOTECH.COM](http://WWW.GENUINBIOTECH.COM)



Western blotting analysis using anti-NR4A2 antibody (Cat#52774). Total lysates were loaded and separated by SDS-PAGE. The blot was incubated with anti-NR4A2 antibody (Cat#52774, 1:800) and conjugated goat anti-rabbit secondary antibody respectively.