

Catalog #: 5278

Aliases

IL10RA; Interleukin 10 Receptor Subunit Alpha; HIL-10R; CDW210A; CD210a; CD210; IL10R; Interleukin-10 Receptor Subunit Alpha; Interleukin-10 Receptor Subunit 1; Interleukin 10 Receptor, Alpha; IL-10 Receptor Subunit Alpha; IL-10R Subunit Alpha; IL-10R Subunit 1; IL-10R1; IL-10RA; Interleukin-10 Receptor Alpha Chain; CD210 Antigen; CDw210a

Background

Gene Name: IL10RA

NCBI Gene Entry: [3587](#)

UniProt Entry: [Q13651](#)

Application Information

Molecular Weight: Predicted, 63 kDa; observed, 63 kDa

Clonality: Mouse monoclonal antibody

Clone ID: 25GB715

Species Reactivity: Human, mouse, rat

Applications Tested: Western blotting (WB), flow cytometry (FCM)

Immunogen

A synthesized peptide derived from human IL10RA

Isotype

Mouse IgG1

Storage Buffer

Supplied in PBS (pH 7.4) containing 50% glycerol, and 0.02% sodium azide.

Storage

Store at -20 °C for one year.

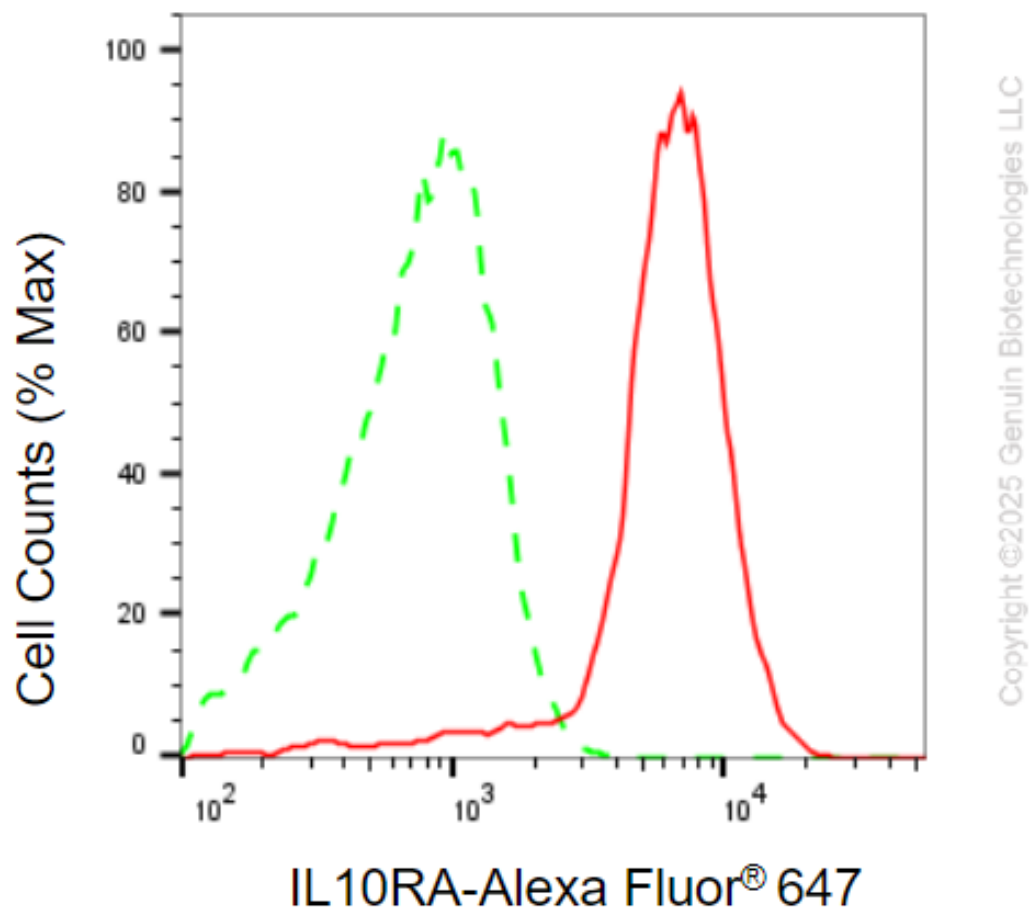
Recommended Dilutions

Western Blotting (WB): 1:200-1:1,000

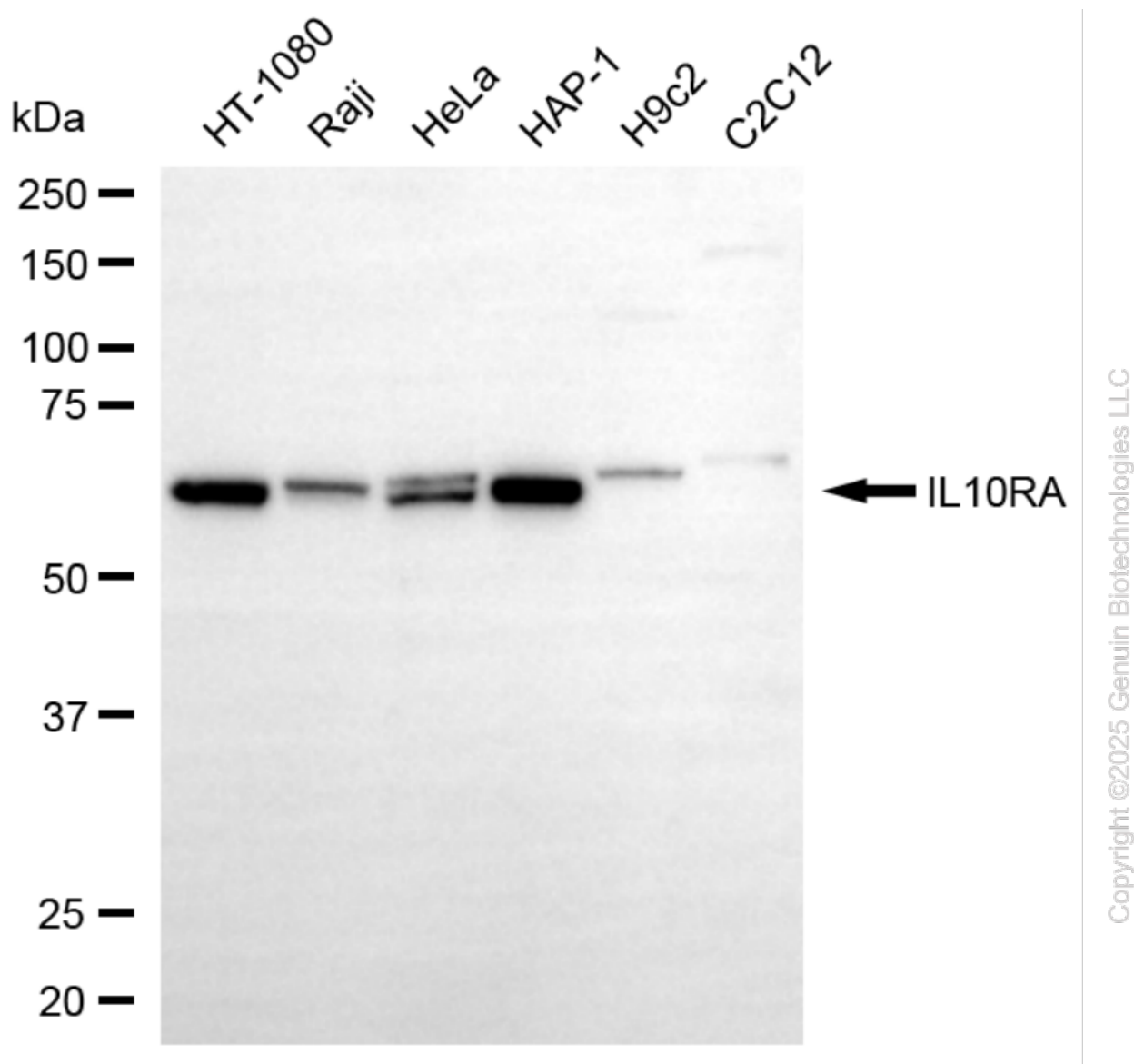
Flow Cytometry (FCM): 1:2,000

Note: This product is for research use only.

Validation Data



Flow cytometric analysis of IL10RA expression in HAP-1 cells using anti-IL10RA antibody (Cat#5278, 1:2,000). Green, isotype control; red, IL10RA.



Western blotting analysis using anti-IL10RA antibody (Cat#5278). Total cell lysates (30 μ g) from various cell lines were loaded and separated by SDS-PAGE. The blot was incubated with anti-IL10RA antibody (Cat#5278, 1:1,000) and HRP-conjugated goat anti-mouse secondary antibody (Cat#101, 1:20,000) respectively. Image was developed using NaQTM ECL Substrate Kit (Cat#716).

SUPPORT

SUPPORT@GENUINBIOTECH.COM
TEL: +1-540-855-7041

ORDERS

SALES@GENUINBIOTECH.COM
FAX: +1-540-855-7041

WWW.GENUINBIOTECH.COM