

Catalog #: 52781

Aliases

IL6; Interleukin 6; IL-6; IFNB2; BSF2; HGF; HSF; B-Cell Stimulatory Factor; CTL Differentiation Factor; Hybridoma Growth Factor; Interferon Beta-2; Interleukin-6; IFN-Beta-2; BSF-2; CDF; Interleukin 6 (Interferon, Beta 2); B-Cell Differentiation Factor; Interferon, Beta 2; Interleukin BSF-2

Background

Gene Name: IL6

NCBI Gene Entry: [3569](#)

UniProt Entry: [P05231](#)

Application Information

Molecular Weight: Predicted, 24 kDa; observed, 23 kDa

Clonality: Rabbit polyclonal antibody

Species Reactivity: Human

Applications Tested: Western blotting (WB), immunohistochemistry (IHC), immunocytochemistry (IC)

Immunogen

A synthesized peptide derived from human IL6

Isotype

Rabbit IgG

Storage Buffer

Supplied in PBS containing 50% glycerol, 0.5% BSA and 0.02% sodium azide.

Storage

Store at -20 °C for one year.

Recommended Dilutions

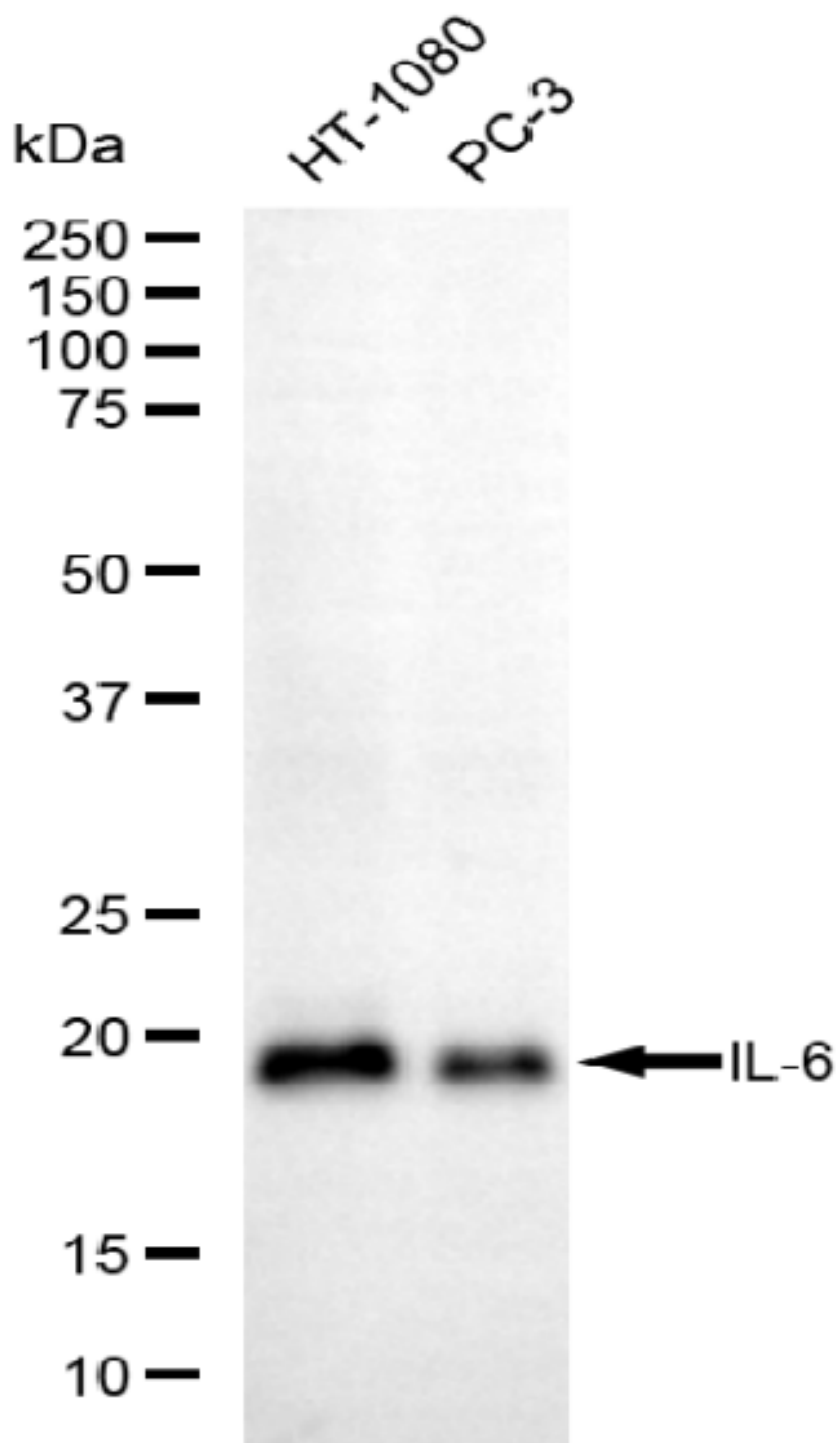
Western Blotting (WB): 1:500-1:2,500

Immunohistochemistry (IHC): 1:100-1:300

Immunocytochemistry (IC): 1:100-1:300

Note: This product is for research use only.

Validation Data



Copyright ©2025 Genuin Biotechnologies LLC

SUPPORT

SUPPORT@GENUINBIOTECH.COM
TEL: +1-540-855-7041

ORDERS

SALES@GENUINBIOTECH.COM
FAX: +1-540-855-7041

WWW.GENUINBIOTECH.COM

Western blotting analysis using anti-IL-6 antibody (Cat#52781). Total lysates (30 µg) were loaded and separated by SDS-PAGE. The blot was incubated with anti-IL-6 antibody (Cat#52781, 1:2,500) and HRP-conjugated goat anti-rabbit secondary antibody (Cat#201, 1:20,000) respectively. Image was developed using FeQ™ ECL Substrate Kit (Cat#226).