

## Catalog #: 52782

### Aliases

ADGRF1; Adhesion G Protein-Coupled Receptor F1; PGR19; G Protein-Coupled Receptor 110; HGPCR36; GPR110; Adhesion G-Protein Coupled Receptor F1; G Protein-Coupled Receptor PGR19; Probable G-Protein Coupled Receptor 110; G-Protein Coupled Receptor KPG\_012; Seven Transmembrane Helix Receptor; G Protein-Coupled Receptor KPG\_012; KPG\_012

### Background

Gene Name: ADGRF1

NCBI Gene Entry: [266977](#)

UniProt Entry: [Q5T601](#)

### Application Information

Molecular Weight: Predicted, 101 kDa; observed, 110 kDa

Clonality: Rabbit polyclonal antibody

Species Reactivity: Human, mouse

Applications Tested: Western blotting (WB), immunocytochemistry (IC)

### Immunogen

A synthesized peptide derived from human GPR110

### Isotype

Rabbit IgG

### Storage Buffer

Supplied in PBS containing 50% glycerol, 0.5% BSA and 0.02% sodium azide.

### Storage

Store at -20 °C for one year.

### Recommended Dilutions

Western Blotting (WB): 1:500-1:2,500

Immunocytochemistry (IC): 1:200-1:1,000

**Note:** This product is for research use only.

### Validation Data

---

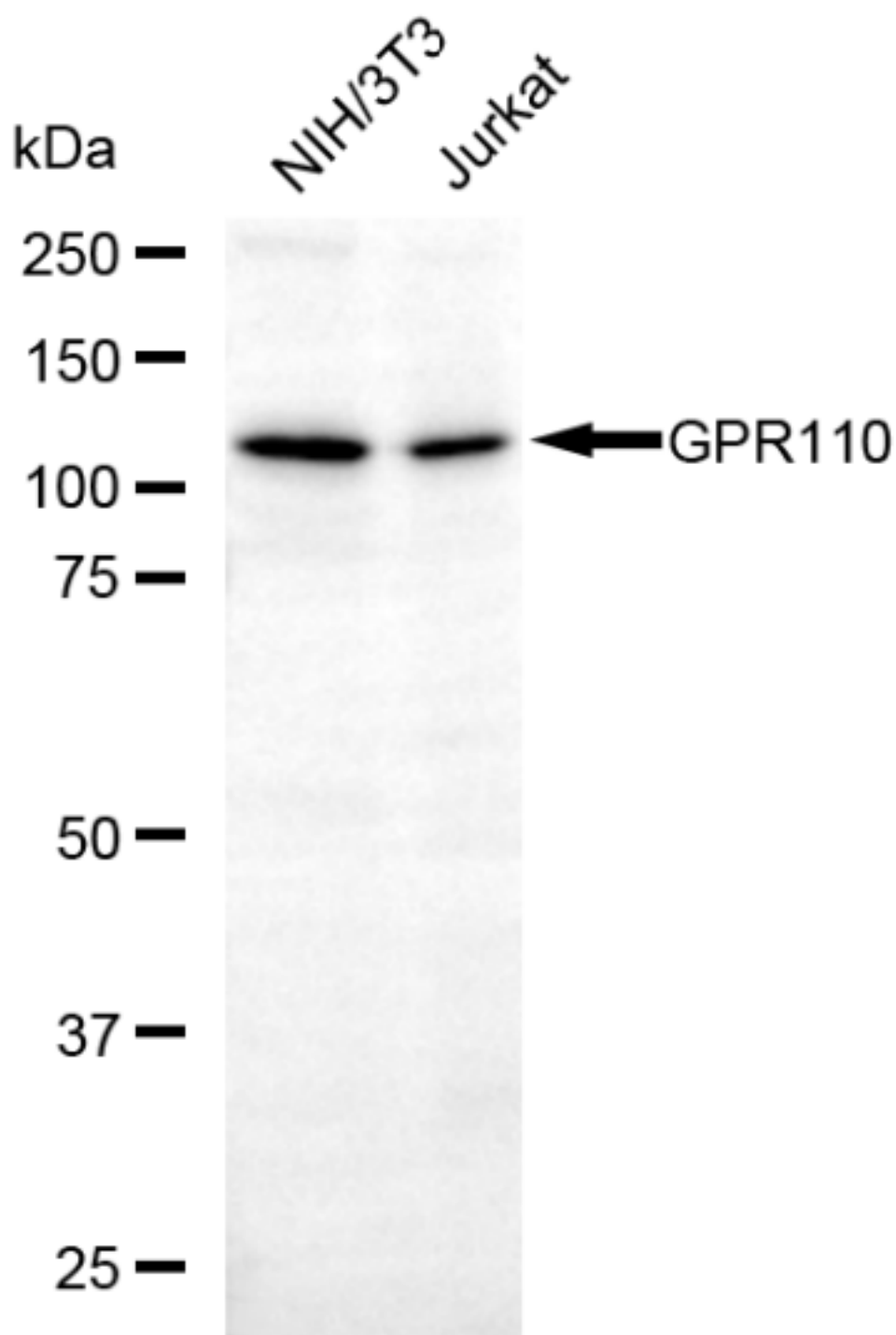
#### SUPPORT

SUPPORT@GENUINBIOTECH.COM  
TEL: +1-540-855-7041

#### ORDERS

SALES@GENUINBIOTECH.COM  
FAX: +1-540-855-7041

[WWW.GENUINBIOTECH.COM](http://WWW.GENUINBIOTECH.COM)



Copyright ©2025 Genuin Biotechnologies LLC

Western blotting analysis using anti-GPR110 antibody (Cat#52782). Total lysates (30 µg) were loaded and separated by SDS-PAGE. The blot was incubated with anti-GPR110 antibody (Cat#52782, 1:2,500) and HRP-conjugated goat anti-rabbit secondary antibody (Cat#201,

**SUPPORT**

SUPPORT@GENUINBIOTECH.COM  
TEL: +1-540-855-7041

**ORDERS**

SALES@GENUINBIOTECH.COM  
FAX: +1-540-855-7041

[WWW.GENUINBIOTECH.COM](http://WWW.GENUINBIOTECH.COM)

1:20,000) respectively. Image was developed using FeQ™ ECL Substrate Kit (Cat#226).