

**Catalog #: 52783**

## Aliases

MUC16; Mucin 16, Cell Surface Associated; CA125; CA-125; Ovarian Cancer-Related Tumor Marker CA125; Ovarian Carcinoma Antigen CA125; Cancer Antigen 125; FLJ14303; Mucin-16; CA125 Ovarian Cancer Antigen; MUC-16

## Background

Gene Name: MUC16

NCBI Gene Entry: [94025](#)

UniProt Entry: [Q8WXI7](#)

## Application Information

Molecular Weight: Predicted, 1519 kDa

Clonality: Rabbit polyclonal antibody

Species Reactivity: Human

Applications Tested: Western blotting (WB), immunohistochemistry (IHC), immunocytochemistry (IC)

## Immunogen

A synthesized peptide derived from human MUC16

## Isotype

Rabbit IgG

## Storage Buffer

Supplied in PBS containing 50% glycerol, 0.5% BSA and 0.02% sodium azide.

## Storage

Store at -20 °C for one year.

## Recommended Dilutions

Western Blotting (WB): 1:500-1:2,000

Immunohistochemistry (IHC): 1:50-1:300

Immunocytochemistry (IC): 1:200-1:1,000

**Note:** This product is for research use only.

---

### SUPPORT

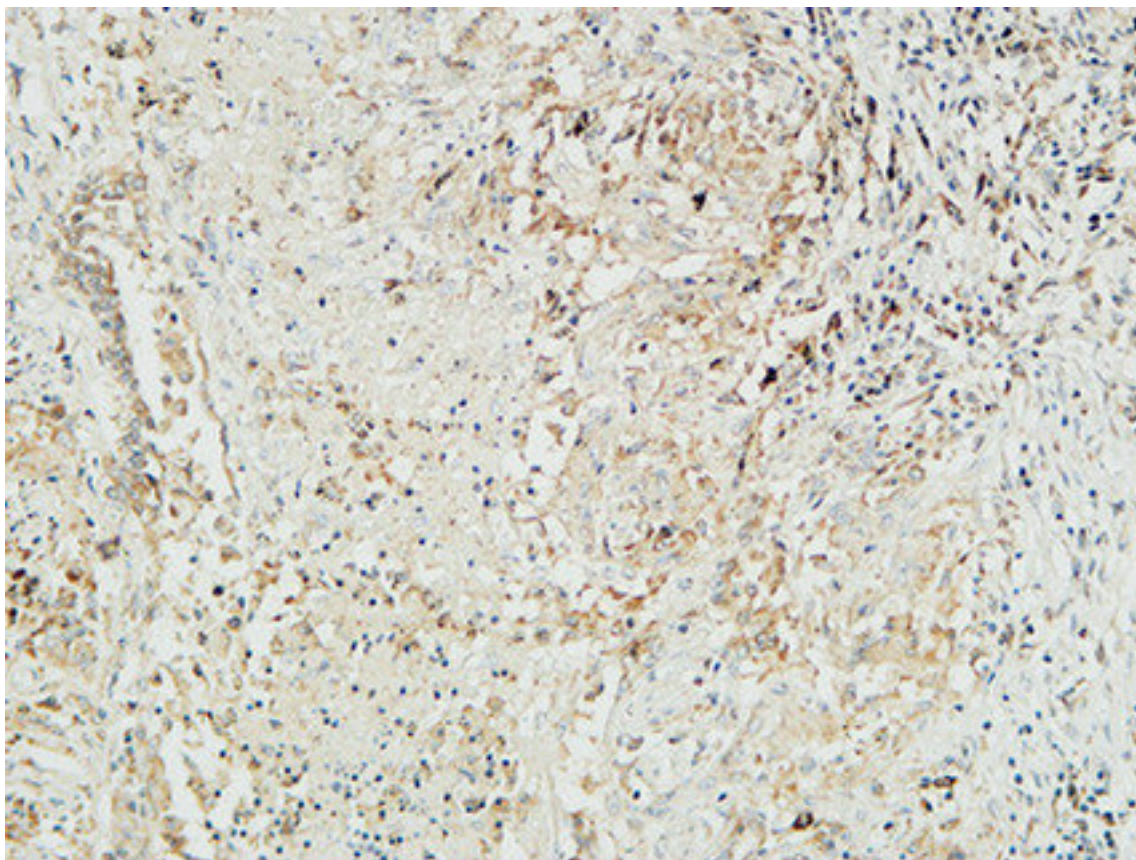
SUPPORT@GENUINBIOTECH.COM  
TEL: +1-540-855-7041

### ORDERS

SALES@GENUINBIOTECH.COM  
FAX: +1-540-855-7041

[WWW.GENUINBIOTECH.COM](http://WWW.GENUINBIOTECH.COM)

## Validation Data



Immunohistochemical analysis of paraffin-embedded Human lung. Antibody was diluted at 1:100 (4°C overnight). High-pressure and temperature EDTA, pH8.0 was used for antigen retrieval. Secondary antibody was diluted at 1:200 (room temperature, 30min).