

**Catalog #: 52785**

## Aliases

SERPINB3; Serpin Family B Member 3; Squamous Cell Carcinoma Antigen 1; HsT1196; SCCA1; T4-A; Serine (Or Cysteine) Proteinase Inhibitor, Clade B (Ovalbumin), Member 3; Serpin Peptidase Inhibitor, Clade B (Ovalbumin), Member 3; Protein T4-A; Serpin B3; SCCA-1; SCC; SCCA-PD; SSCA1; SCCA

## Background

Gene Name: SERPINB3

NCBI Gene Entry: [6317](#)

UniProt Entry: [P29508](#)

## Application Information

Molecular Weight: Predicted, 45 kDa; observed, 45 kDa

Clonality: Rabbit polyclonal antibody

Species Reactivity: Human

Applications Tested: Western blotting (WB), immunohistochemistry (IHC), immunocytochemistry (IC)

## Immunogen

A synthesized peptide derived from human SERPINB3/4

## Isotype

Rabbit IgG

## Storage Buffer

Supplied in PBS containing 50% glycerol, 0.5% BSA and 0.02% sodium azide.

## Storage

Store at -20 °C for one year.

## Recommended Dilutions

Western Blotting (WB): 1:500-1:2,000

Immunohistochemistry (IHC): 1:100-1:300

Immunocytochemistry (IC): 1:50-1:200

---

### SUPPORT

SUPPORT@GENUINBIOTECH.COM  
TEL: +1-540-855-7041

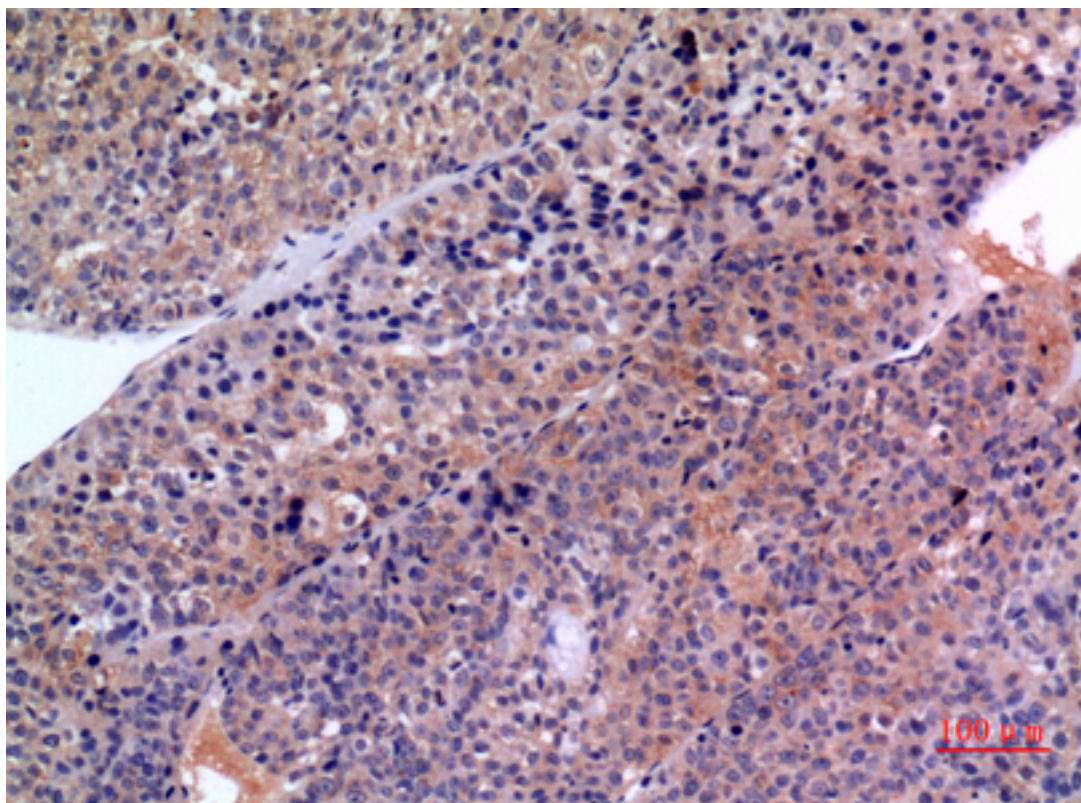
### ORDERS

SALES@GENUINBIOTECH.COM  
FAX: +1-540-855-7041

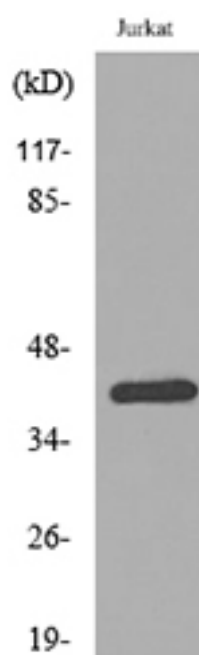
[WWW.GENUINBIOTECH.COM](http://WWW.GENUINBIOTECH.COM)

**Note:** This product is for research use only.

## Validation Data



Immunohistochemical analysis of paraffin-embedded human-liver-cancer, antibody was diluted at 1:100.



### SUPPORT

SUPPORT@GENUINBIOTECH.COM  
TEL: +1-540-855-7041

### ORDERS

SALES@GENUINBIOTECH.COM  
FAX: +1-540-855-7041

[WWW.GENUINBIOTECH.COM](http://WWW.GENUINBIOTECH.COM)

Western blotting analysis of lysate from Jurkat cells, using SERPINB3 antibody.