

**Catalog #: 52789**

## Aliases

SLC16A3; Solute Carrier Family 16 Member 3; MCT3; MCT4; Solute Carrier Family 16, Member 3 (Monocarboxylic Acid Transporter 4); Solute Carrier Family 16 (Monocarboxylic Acid Transporters), Member 3; Solute Carrier Family 16 (Monocarboxylate Transporter), Member 3; Monocarboxylate Transporter 4; MCT 4; Monocarboxylate Transporter 3; MCT 3; MCT-3; MCT-4

## Background

Gene Name: SLC16A3

NCBI Gene Entry: [9123](#)

UniProt Entry: [O15427](#)

## Application Information

Molecular Weight: Predicted, 49 kDa; observed, 50 kDa

Clonality: Rabbit polyclonal antibody

Species Reactivity: Human, mouse, rat

Applications Tested: Western blotting (WB), immunohistochemistry (IHC)

## Immunogen

A synthesized peptide derived from human MOT4

## Isotype

Rabbit IgG

## Storage Buffer

Supplied in PBS containing 50% glycerol, 0.5% BSA and 0.09% sodium azide.

## Storage

Store at -20 °C for one year.

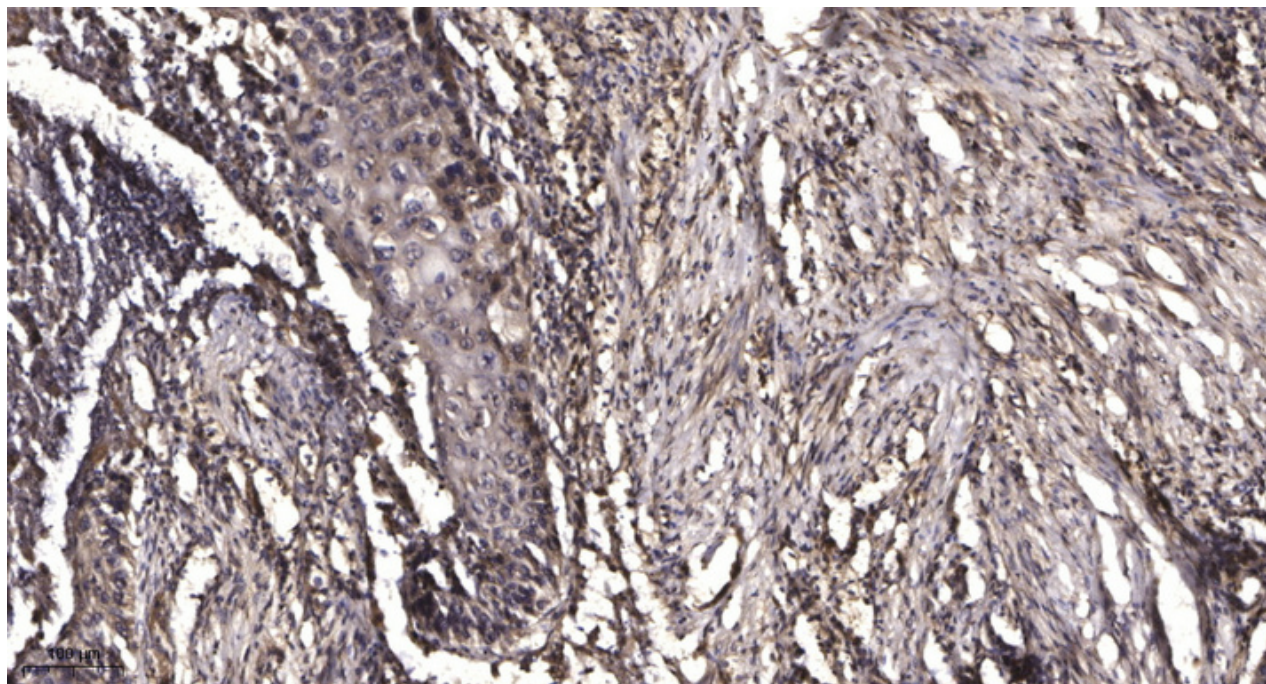
## Recommended Dilutions

Western Blotting (WB): 1:500-1:2,000

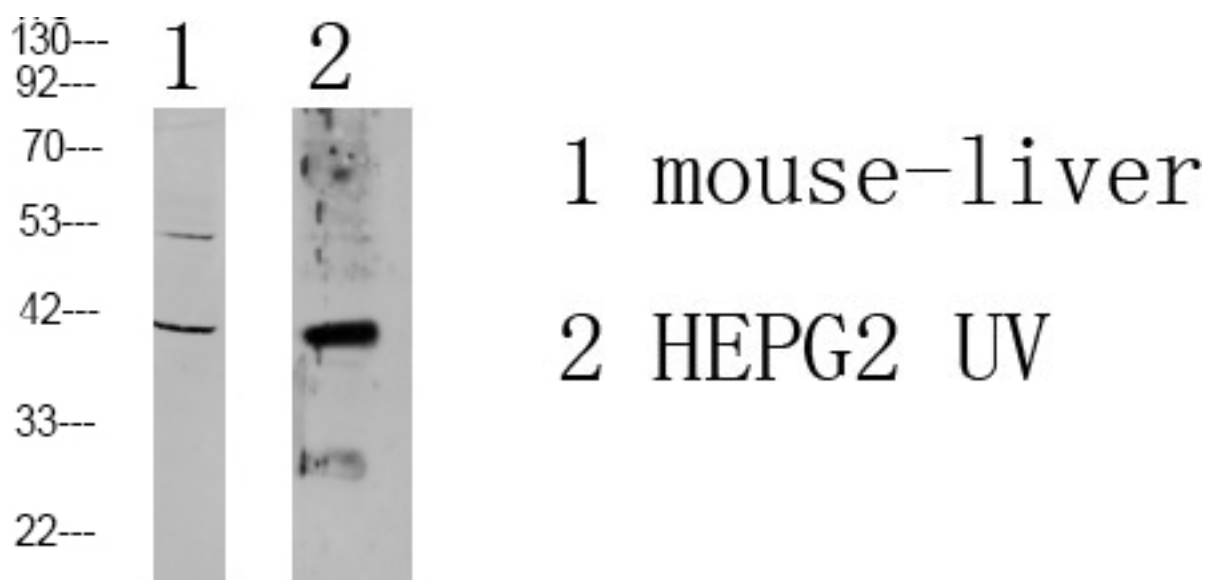
Immunohistochemistry (IHC): 1:50-1:300

**Note:** This product is for research use only.

## Validation Data



Immunohistochemical analysis of paraffin-embedded human Squamous cell carcinoma of lung. Antibody was diluted at 1:200 (4°C overnight). Tris-EDTA, pH 9.0 was used for antigen retrieval. Secondary antibody was diluted at 1:200 (room temperature, 45min).



Western blotting analysis using anti-SLC16A3 antibody (Cat#52789). Total lysates were loaded and separated by SDS-PAGE. The blot was incubated with anti-SLC16A3 antibody (Cat#52789, 1:1,000) and conjugated secondary antibody respectively.

### SUPPORT

SUPPORT@GENUINBIOTECH.COM  
TEL: +1-540-855-7041

### ORDERS

SALES@GENUINBIOTECH.COM  
FAX: +1-540-855-7041

[WWW.GENUINBIOTECH.COM](http://WWW.GENUINBIOTECH.COM)