

Catalog #: 52795

Aliases

MTFP1; Mitochondrial Fission Process 1; MTP18; HSPC242; Mitochondrial Fission Process Protein 1; Mitochondrial 18 KDa Protein; Mitochondrial Fission Protein MTP18; Mitochondrial Protein 18 KDa

Background

Gene Name: MTFP1

NCBI Gene Entry: [51537](#)

UniProt Entry: [Q9UDX5](#)

Application Information

Molecular Weight: Predicted, 18 kDa

Clonality: Rabbit polyclonal antibody

Species Reactivity: Mouse, rat

Applications Tested: Immunohistochemistry (IHC), immunocytochemistry (IC)

Immunogen

A synthesized peptide derived from human MTP18

Isotype

Rabbit IgG

Storage Buffer

Supplied in 0.01M TBS (pH7.4) containing 50% glycerol, 1% BSA and 0.02% Proclin300.

Storage

Store at -20 °C for one year.

Recommended Dilutions

Immunohistochemistry (IHC): 1:100-1:500

Immunocytochemistry (IC): 1:100-1:500

Note: This product is for research use only.

Validation Data

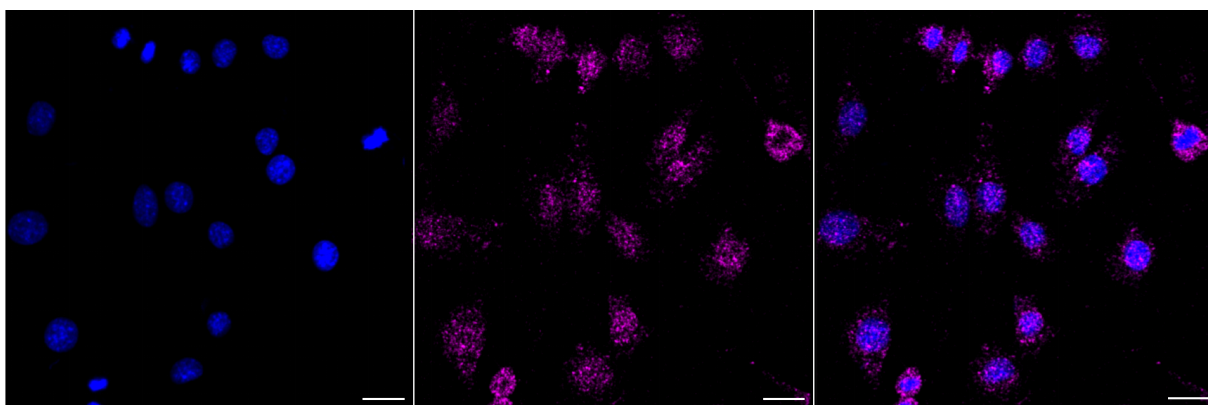
SUPPORT

SUPPORT@GENUINBIOTECH.COM
TEL: +1-540-855-7041

ORDERS

SALES@GENUINBIOTECH.COM
FAX: +1-540-855-7041

WWW.GENUINBIOTECH.COM



Copyright ©2025 Genuin Biotechnologies LLC

Immunocytochemical staining of C2C12 cells with anti-MTFP18 antibody (Cat#52795, 1:1,000). Nuclei were stained blue with DAPI; MTFP18 was stained magenta with Alexa Fluor® 647. Images were taken using Leica stellaris 5. Protein abundance based on laser Intensity and smart gain: Low. Scale bar, 20 μ m.