

Catalog #: 5280

Aliases

TIE1; Tyrosine Kinase With Immunoglobulin Like And EGF Like Domains 1; JTK14; TIE; Tyrosine Kinase With Immunoglobulin And Epidermal Growth Factor Homology Domains 1; Tyrosine-Protein Kinase Receptor Tie-1; EC 2.7.10.1; Tyrosine Kinase With Immunoglobulin-Like And EGF-Like Domains 1; EC 2.7.10; LMPHM11

Background

Gene Name: TIE1

NCBI Gene Entry: [7075](#)

UniProt Entry: [P35590](#)

Application Information

Molecular Weight: Predicted, 125 kDa; observed, 165 kDa

Clonality: Mouse monoclonal antibody

Clone ID: 25GB725

Species Reactivity: Human, mouse, rat

Applications Tested: Western blotting (WB), flow cytometry (FCM)

Immunogen

Recombinant protein of human TIE1

Isotype

Mouse IgG2b

Storage Buffer

Supplied in PBS (pH 7.4) containing 50% glycerol, and 0.02% sodium azide.

Storage

Store at -20 °C for one year.

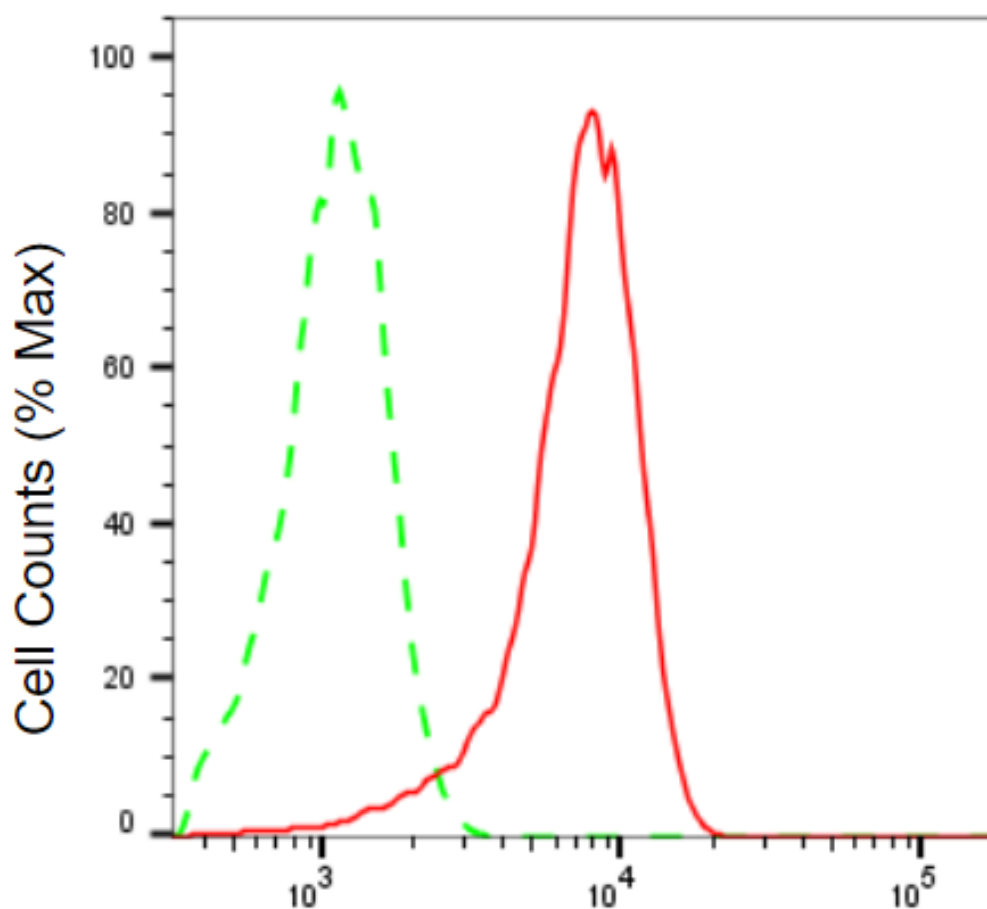
Recommended Dilutions

Western Blotting (WB): 1:400-1:2,000

Flow Cytometry (FCM): 1:2,000

Note: This product is for research use only.

Validation Data



Copyright ©2025 Genuin Biotechnologies LLC

TIE1-Alexa Fluor® 647

Flow cytometric analysis of TIE1 expression in HepG2 cells using anti-TIE1 antibody (Cat#5280, 1:2,000). Green, isotype control; red, TIE1.

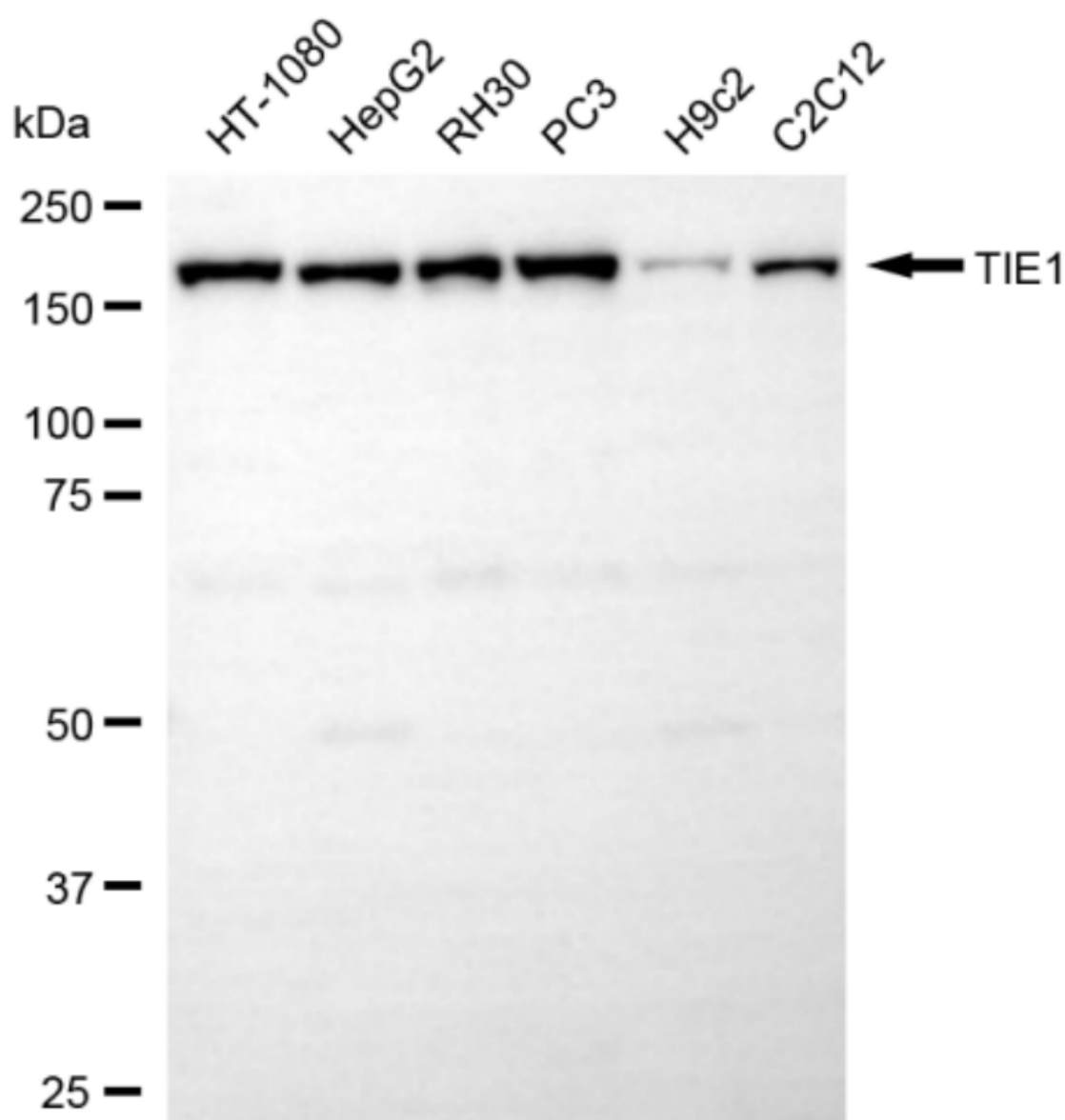
SUPPORT

SUPPORT@GENUINBIOTECH.COM
TEL: +1-540-855-7041

ORDERS

SALES@GENUINBIOTECH.COM
FAX: +1-540-855-7041

WWW.GENUINBIOTECH.COM



Copyright ©2025 Genuin Biotechnologies LLC

Western blotting analysis using anti-TIE1 antibody (Cat#5280). Total cell lysates (30 μ g) from various cell lines were loaded and separated by SDS-PAGE. The blot was incubated with anti-TIE1 antibody (Cat#5280, 1:2,000) and HRP-conjugated goat anti-mouse secondary antibody (Cat#101, 1:20,000) respectively. Image was developed using FeQ™ ECL Substrate Kit (Cat#226).

SUPPORT

SUPPORT@GENUINBIOTECH.COM
TEL: +1-540-855-7041

ORDERS

SALES@GENUINBIOTECH.COM
FAX: +1-540-855-7041

WWW.GENUINBIOTECH.COM