

## Catalog #: 5281

### Aliases

SERPING1; Serpin Family G Member 1; C1IN; Plasma Protease C1 Inhibitor; C1INH; HAE1; HAE2; C1NH; Serpin Peptidase Inhibitor, Clade G (C1 Inhibitor), Member 1; C1 Esterase Inhibitor; C1-Inhibiting Factor; C1-Inhibitor; Serpin G1; C1-INH; Serine (Or Cysteine) Proteinase Inhibitor, Clade G (C1 Inhibitor), Member 1, (Angioedema, Hereditary); Serine/Cysteine Proteinase Inhibitor Clade G Member 1; Serpin Peptidase Inhibitor Clade G Member 1; Epididymis Secretory Sperm Binding Protein; Complement Component 1 Inhibitor; Angioedema, Hereditary; C1 Inh; C1Inh

### Background

Gene Name: SERPING1

NCBI Gene Entry: [710](#)

UniProt Entry: [P05155](#)

### Application Information

Molecular Weight: Predicted, 55 kDa; observed, 55 kDa

Clonality: Mouse monoclonal antibody

Clone ID: 25GB730

Species Reactivity: Human, mouse, rat

Applications Tested: Western blotting (WB), flow cytometry (FCM), immunocytochemistry (IC)

### Immunogen

Purified C1 inhibitor from human blood

### Isotype

Mouse IgG1

### Storage Buffer

Supplied in PBS (pH 7.4) containing 50% glycerol, and 0.02% sodium azide.

### Storage

Store at -20 °C for one year.

### Recommended Dilutions

Western Blotting (WB): 1:400-1:2,000

Flow Cytometry (FCM): 1:2,000

---

#### SUPPORT

SUPPORT@GENUINBIOTECH.COM  
TEL: +1-540-855-7041

#### ORDERS

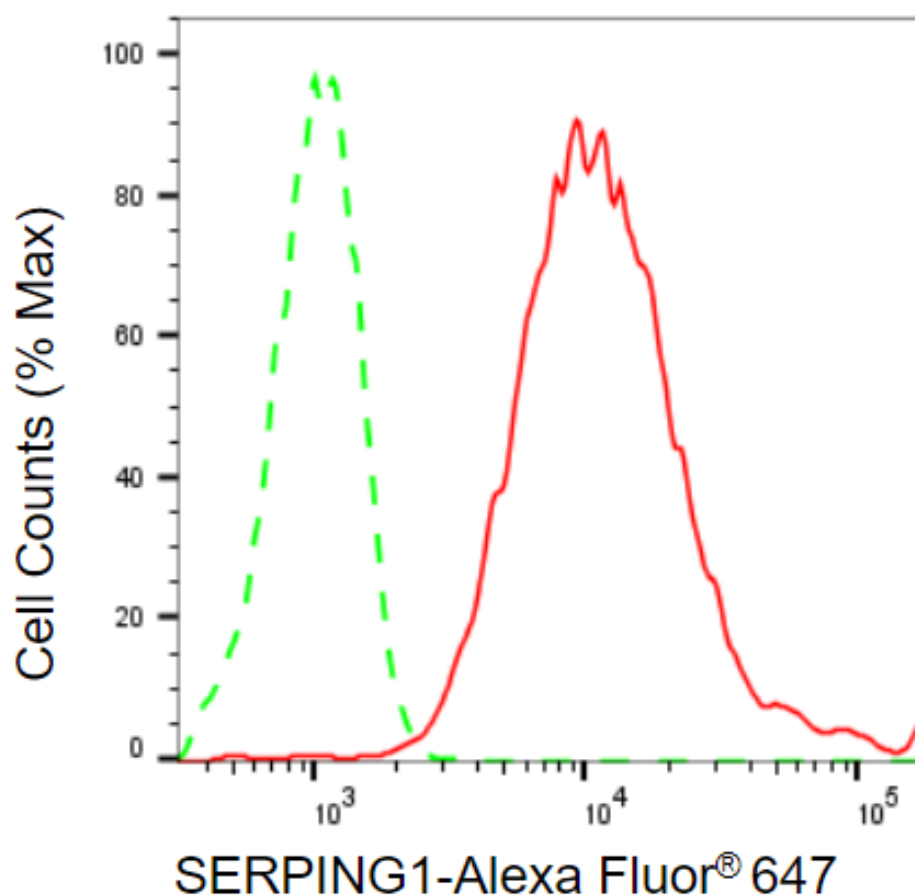
SALES@GENUINBIOTECH.COM  
FAX: +1-540-855-7041

[WWW.GENUINBIOTECH.COM](http://WWW.GENUINBIOTECH.COM)

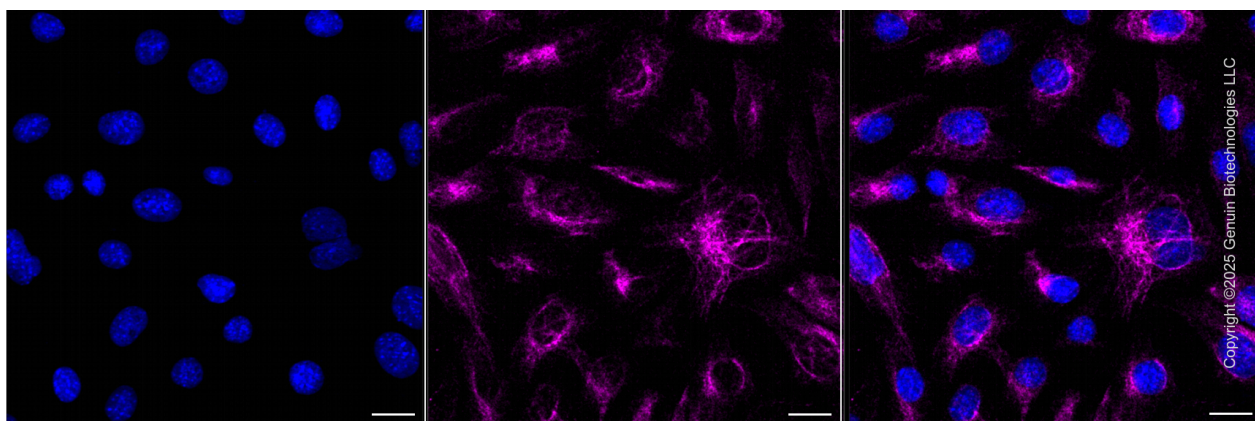
Immunocytochemistry (IC): 1:100-1:1,000

**Note:** This product is for research use only.

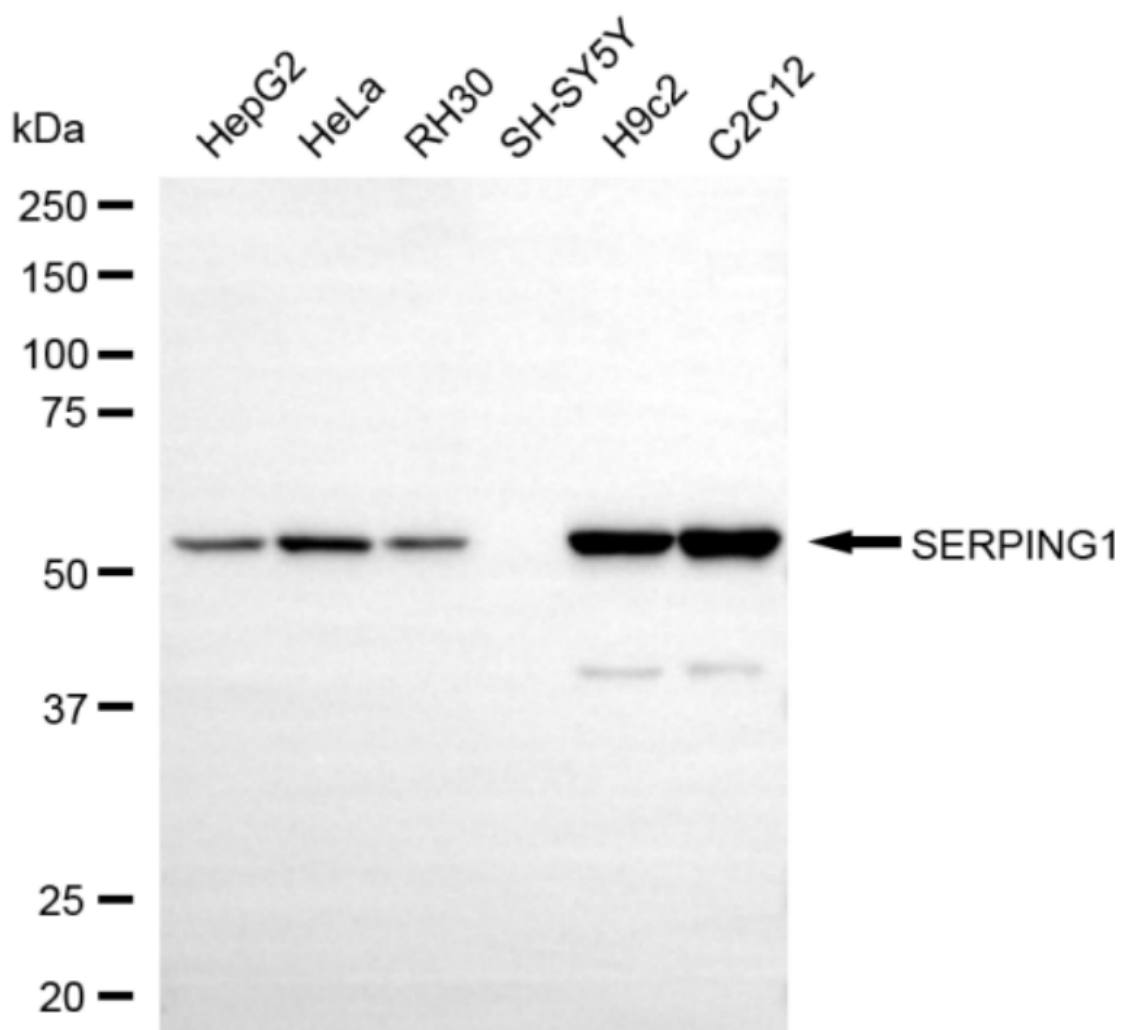
## Validation Data



Flow cytometric analysis of SERPING1 expression in C2C12 cells using anti-SERPING1 antibody (Cat#5281, 1:2,000). Green, isotype control; red, SERPING1.



Immunocytochemical staining of C2C12 cells with anti-SERPING1 antibody (Cat#5281, 1:1,000) . Nuclei were stained blue with DAPI; SERPING1 was stained magenta with Alexa Fluor® 647. Images were taken using Leica stellaris 5. Protein abundance based on laser Intensity and smart gain: Medium. Scale bar, 20  $\mu$ m.

**SUPPORT**

SUPPORT@GENUINBIOTECH.COM  
TEL: +1-540-855-7041

**ORDERS**

SALES@GENUINBIOTECH.COM  
FAX: +1-540-855-7041

[WWW.GENUINBIOTECH.COM](http://WWW.GENUINBIOTECH.COM)

Western blotting analysis using anti-SERPING1 antibody (Cat#5281). Total cell lysates (30 µg) from various cell lines were loaded and separated by SDS-PAGE. The blot was incubated with anti-SERPING1 antibody (Cat#5281, 1:2,000) and HRP-conjugated goat anti-mouse secondary antibody (Cat#101, 1:20,000) respectively. Image was developed using FeQ™ ECL Substrate Kit (Cat#226).