

## Catalog #: 52817

### Aliases

IGFBP5; Insulin Like Growth Factor Binding Protein 5; Insulin-Like Growth Factor-Binding Protein 5; IGF-Binding Protein 5; IGFBP-5; IBP-5; IBP5; Insulin-Like Growth Factor Binding Protein 5

### Background

Gene Name: IGFBP5

NCBI Gene Entry: [3488](#)

UniProt Entry: [P24593](#)

### Application Information

Molecular Weight: Predicted, 31 kDa; observed, 29 kDa

Clonality: Rabbit polyclonal antibody

Species Reactivity: Human, Mouse, Rat

Applications Tested: Western Blotting (WB)

### Immunogen

A synthesized peptide derived from human IGFBP5

### Isotype

Rabbit IgG

### Storage Buffer

Supplied in PBS containing 50% glycerol, 0.5% BSA and 0.02% sodium azide.

### Storage

Store at -20 °C for one year.

### Recommended Dilutions

Western Blotting (WB): 1:500-1:2,000

**Note:** This product is for research use only.

### Validation Data

---

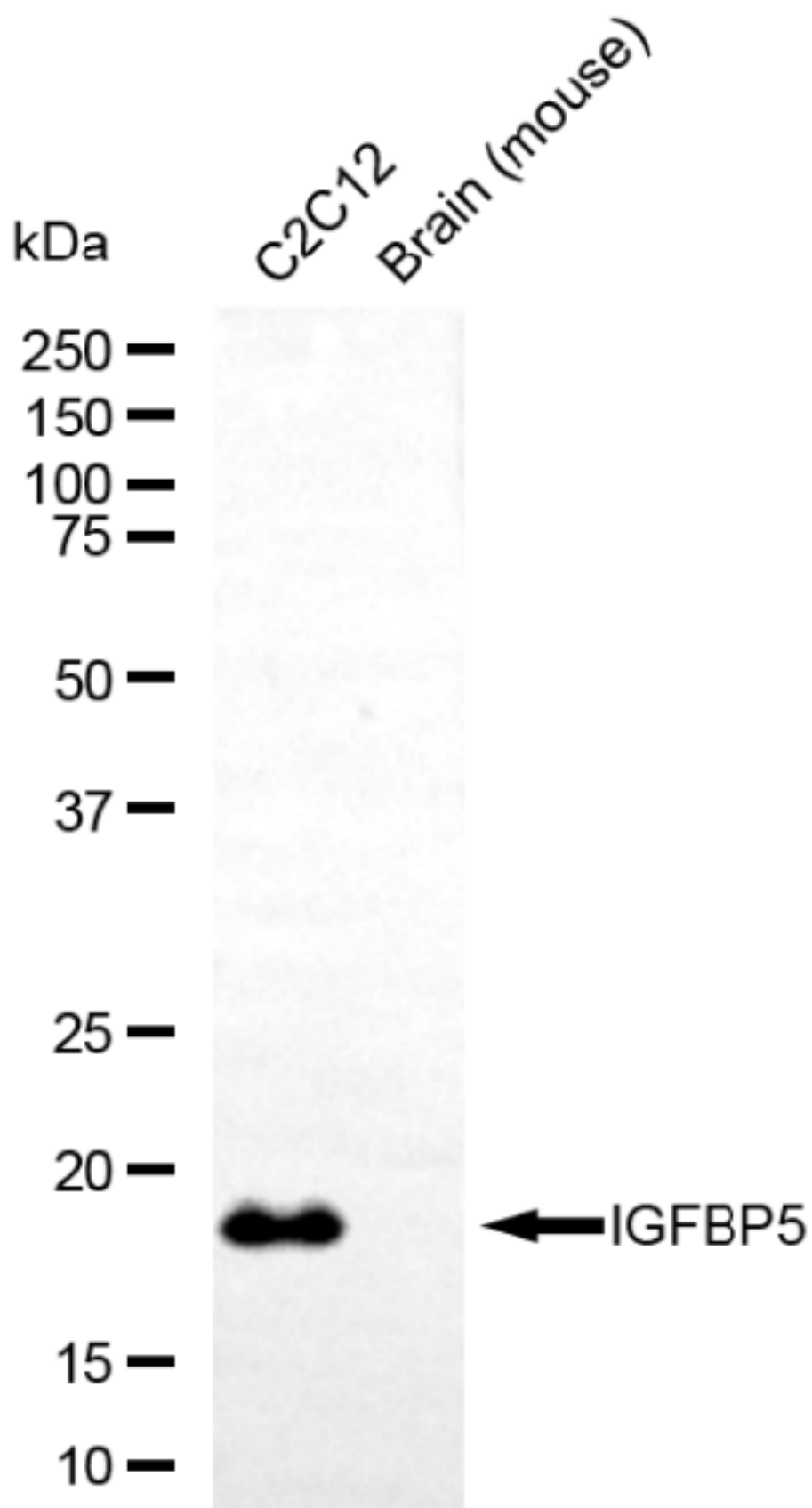
#### SUPPORT

SUPPORT@GENUINBIOTECH.COM  
TEL: +1-540-855-7041

#### ORDERS

SALES@GENUINBIOTECH.COM  
FAX: +1-540-855-7041

[WWW.GENUINBIOTECH.COM](http://WWW.GENUINBIOTECH.COM)



Copyright ©2025 Genuin Biotechnologies LLC

**SUPPORT**

SUPPORT@GENUINBIOTECH.COM  
TEL: +1-540-855-7041

**ORDERS**

SALES@GENUINBIOTECH.COM  
FAX: +1-540-855-7041

[WWW.GENUINBIOTECH.COM](http://WWW.GENUINBIOTECH.COM)

Western blotting analysis using anti-IGFBP5 antibody (Cat#52817). Total lysates (30 µg) were loaded and separated by SDS-PAGE. The blot was incubated with anti-IGFBP5 antibody (Cat#52817, 1:2,500) and HRP-conjugated goat anti-rabbit secondary antibody (Cat#201, 1:20,000) respectively. Image was developed using FeQ™ ECL Substrate Kit (Cat#226).