

Catalog #: 52819

Aliases

LPCAT2; Lysophosphatidylcholine Acyltransferase 2; LysoPAFAT; AGPAT11; LPLAT9; AYTL1; Acetyl-CoA:Lyso-Platelet-Activating Factor Acetyltransferase; 1-Alkenylglycerophosphocholine O-Acyltransferase; 1-Alkylglycerophosphocholine O-Acetyltransferase; 1-Acylglycerol-3-Phosphate O-Acyltransferase 11; 1-Acylglycerophosphocholine O-Acyltransferase; Lysophosphatidic Acid Acyltransferase Alpha; Acetyl-CoA:Lyso-PAF Acetyltransferase; Lysophospholipid Acyltransferase 9; Lyso-PAF Acetyltransferase; 1-AGP Acyltransferase 11; LysoPC Acyltransferase; Acyltransferase-Like 1; LPC Acyltransferase; LPAAT-Alpha; EC 2.3.1.23; 1-AGPAT 11; FLJ20481; LPCAT-2; Lyso-Platelet-Activating Factor (PAF) Acetyltransferase; Acyl-CoA:Lysophosphatidylcholine Acyltransferase; Acyltransferase Like 1; EC 2.3.1.51; EC 2.3.1.25; EC 2.3.1.67; EC 2.3.1

Background

Gene Name: LPCAT2

NCBI Gene Entry: [54947](#)

UniProt Entry: [Q7L5N7](#)

Application Information

Molecular Weight: Predicted, 60 kDa; observed, 50 kDa

Clonality: Rabbit polyclonal antibody

Species Reactivity: Human, rat

Applications Tested: Western Blotting (WB), Immunohistochemistry (IHC)

Immunogen

A synthesized peptide derived from human LPCAT2

Isotype

Rabbit IgG

Storage Buffer

Supplied in PBS containing 50% glycerol, 0.5% BSA and 0.02% sodium azide.

Storage

Store at -20 °C for one year.

Recommended Dilutions

SUPPORT

SUPPORT@GENUINBIOTECH.COM
TEL: +1-540-855-7041

ORDERS

SALES@GENUINBIOTECH.COM
FAX: +1-540-855-7041

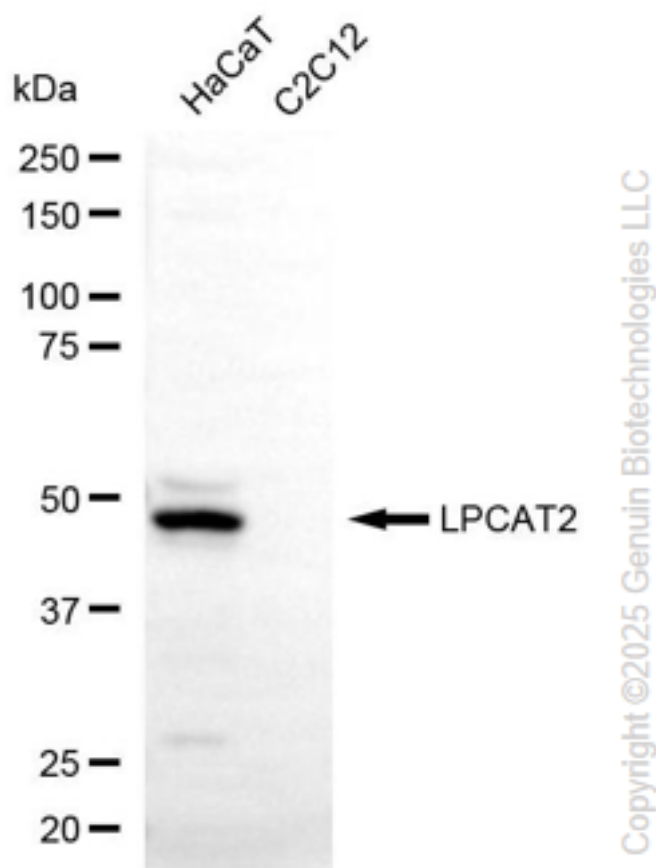
WWW.GENUINBIOTECH.COM

Western Blotting (WB): 1:500-1:2,500

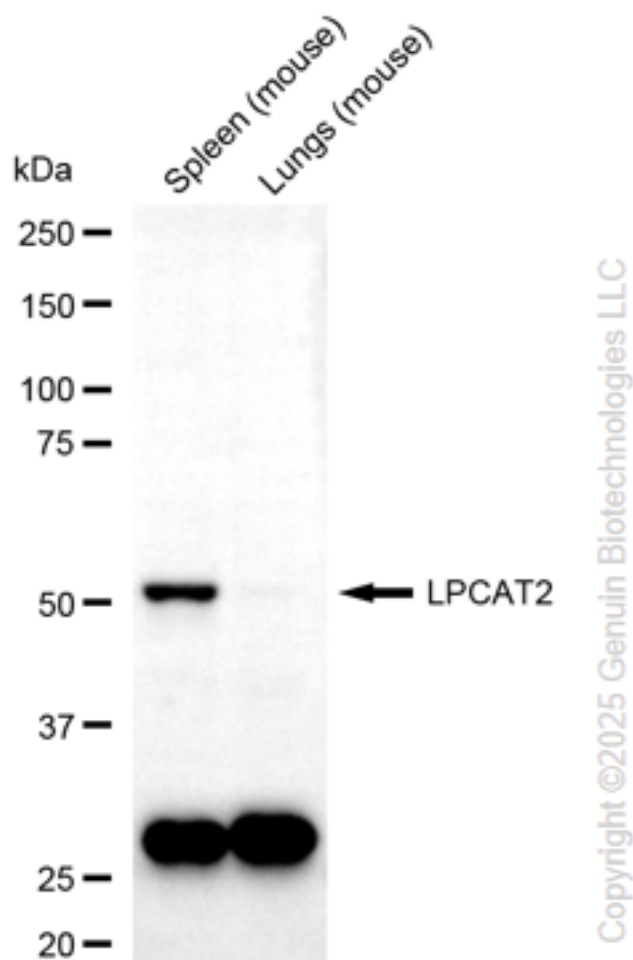
Immunohistochemistry (IHC): 1:50-1:200

Note: This product is for research use only.

Validation Data



Western blotting analysis using anti-LPCAT2 antibody (Cat#52819). Total cell lysates (30 µg) from various cell lines were loaded and separated by SDS-PAGE. The blot was incubated with anti-LPCAT2 antibody (Cat#52819, 1:2,500) and HRP-conjugated goat anti-rabbit secondary antibody (Cat#201, 1:20,000) respectively. Image was developed using FeQ™ ECL Substrate Kit (Cat#226).



Western blotting analysis using anti-LPCAT2 antibody (Cat#52819). Total lysates (30 μ g) were loaded and separated by SDS-PAGE. The blot was incubated with anti-LPCAT2 antibody (Cat#52819, 1:2,500) and HRP-conjugated goat anti-rabbit secondary antibody (Cat#201, 1:20,000) respectively. Image was developed using FeQ™ ECL Substrate Kit (Cat#226).