

Catalog #: 5282

Aliases

TRIM21; Tripartite Motif Containing 21; RNF81; RO52; E3 Ubiquitin-Protein Ligase TRIM21; SSA1; Sjogren Syndrome Antigen A1 (52kDa, Ribonucleoprotein Autoantigen SS-A/Ro); 52 KDa Ribonucleoprotein Autoantigen Ro/SS-A; Tripartite Motif-Containing Protein 21; Sjogren Syndrome Type A Antigen; RING Finger Protein 81; 52 KDa Ro Protein; Ro/SSA 52kDa; Ro(SS-A); SS-A; RING-Type E3 Ubiquitin Transferase TRIM21; Tripartite Motif-Containing 21; Sicca Syndrome Antigen A; EC 2.3.2.27; Ro/SSA; SSA

Background

Gene Name: TRIM21

NCBI Gene Entry: [6737](#)

UniProt Entry: [P19474](#)

Application Information

Molecular Weight: Predicted, 54 kDa; observed, 50 kDa

Clonality: Mouse monoclonal antibody

Clone ID: 25GB735

Species Reactivity: Human

Applications Tested: Western blotting (WB), flow cytometry (FCM), immunocytochemistry (IC)

Immunogen

Recombinant protein of human TRIM21

Isotype

Mouse IgG1

Storage Buffer

Supplied in PBS (pH 7.4) containing 50% glycerol, and 0.02% sodium azide.

Storage

Store at -20 °C for one year.

Recommended Dilutions

Western Blotting (WB): 1:400-1:2,000

Flow Cytometry (FCM): 1:2,000

Immunocytochemistry (IC): 1:100-1:1,000

SUPPORT

SUPPORT@GENUINBIOTECH.COM
TEL: +1-540-855-7041

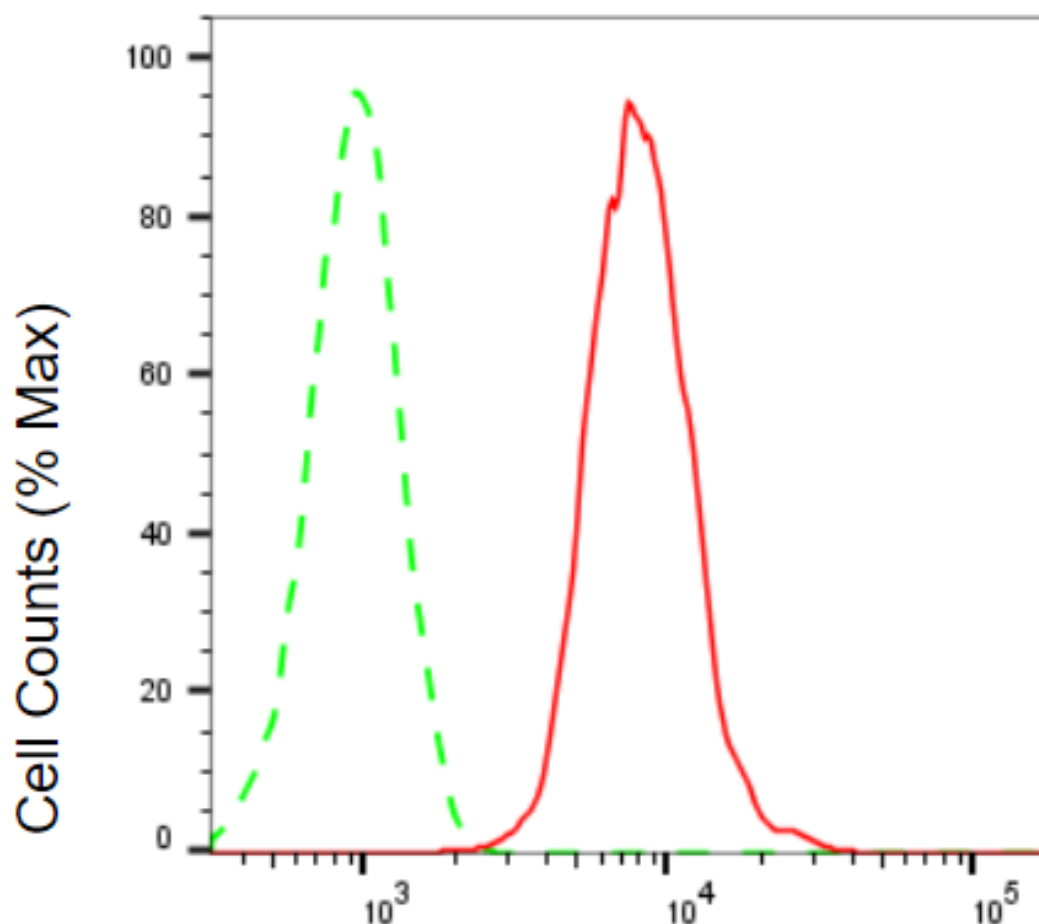
ORDERS

SALES@GENUINBIOTECH.COM
FAX: +1-540-855-7041

WWW.GENUINBIOTECH.COM

Note: This product is for research use only.

Validation Data



Copyright ©2025 Genuin Biotechnologies LLC

TRIM21-Alexa Fluor® 647

Flow cytometric analysis of TRIM21 expression in HT-1080 cells using anti-TRIM21 antibody (Cat#5282, 1:2,000). Green, isotype control; red, TRIM21.

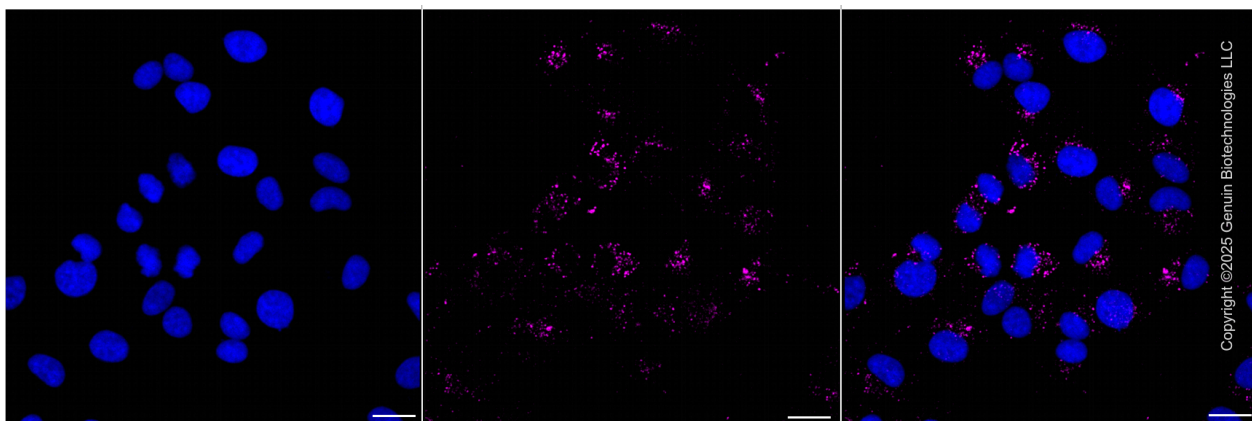
SUPPORT

SUPPORT@GENUINBIOTECH.COM
TEL: +1-540-855-7041

ORDERS

SALES@GENUINBIOTECH.COM
FAX: +1-540-855-7041

WWW.GENUINBIOTECH.COM



Immunocytochemical staining of HT-1080 cells with anti-TRIM21 antibody (Cat#5282, 1:1,000) . Nuclei were stained blue with DAPI; TRIM21 was stained magenta with Alexa Fluor® 647. Images were taken using Leica stellaris 5. Protein abundance based on laser Intensity and smart gain: Medium. Scale bar, 20 μ m.

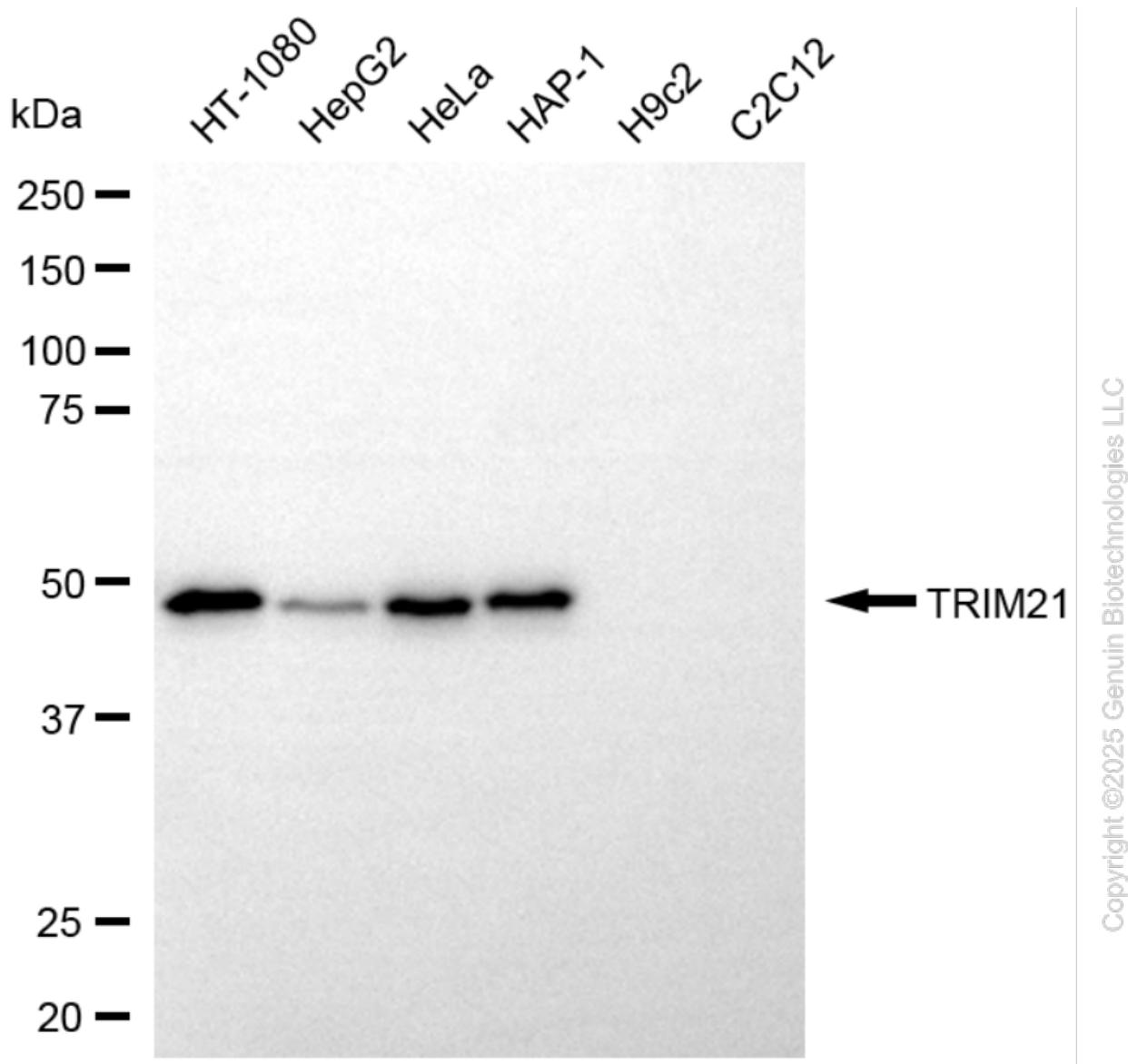
SUPPORT

SUPPORT@GENUINBIOTECH.COM
TEL: +1-540-855-7041

ORDERS

SALES@GENUINBIOTECH.COM
FAX: +1-540-855-7041

WWW.GENUINBIOTECH.COM



Western blotting analysis using anti-TRIM21 antibody (Cat#5282). Total cell lysates (30 µg) from various cell lines were loaded and separated by SDS-PAGE. The blot was incubated with anti-TRIM21 antibody (Cat#5282, 1:2,000) and HRP-conjugated goat anti-mouse secondary antibody (Cat#101, 1:20,000) respectively. Image was developed using FeQ™ ECL Substrate Kit (Cat#226).

SUPPORT

SUPPORT@GENUINBIOTECH.COM
TEL: +1-540-855-7041

ORDERS

SALES@GENUINBIOTECH.COM
FAX: +1-540-855-7041

WWW.GENUINBIOTECH.COM