

**Catalog #: 52827**

## Aliases

COL1A2; Collagen Type I Alpha 2 Chain; Collagen Of Skin, Tendon And Bone, Alpha-2 Chain; Collagen I, Alpha-2 Polypeptide; Collagen, Type I, Alpha 2; Collagen Alpha-2(I) Chain; Alpha-2 Type I Collagen; Alpha 2(I)-Collagen; Type I Procollagen; OI4; Epididymis Secretory Sperm Binding Protein; Osteogenesis Imperfecta Type IV; Alpha 2 Type I Procollagen; Alpha-2 Collagen Type I; Collagen Type I Alpha 2; Alpha 2(I) Procollagen; EDSARTH2; EDSCV

## Background

Gene Name: COL1A2

NCBI Gene Entry: [1278](#)

UniProt Entry: [P08123](#)

## Application Information

Molecular Weight: Predicted, 129 kDa; observed, 200 kDa

Clonality: Rabbit polyclonal antibody

Species Reactivity: Human, mouse, rat

Applications Tested: Western blotting (WB), immunohistochemistry (IHC), immunocytochemistry (IC)

## Immunogen

A synthesized peptide derived from human Collagen I

## Isotype

Rabbit IgG

## Storage Buffer

Supplied in PBS containing 50% glycerol, 0.5% BSA and 0.02% sodium azide.

## Storage

Store at -20 °C for one year.

## Recommended Dilutions

Western Blotting (WB): 1:500-1:2,000

Immunohistochemistry (IHC): 1:100-1:300

Immunocytochemistry (IC): 1:200-1:1,000

---

### SUPPORT

SUPPORT@GENUINBIOTECH.COM  
TEL: +1-540-855-7041

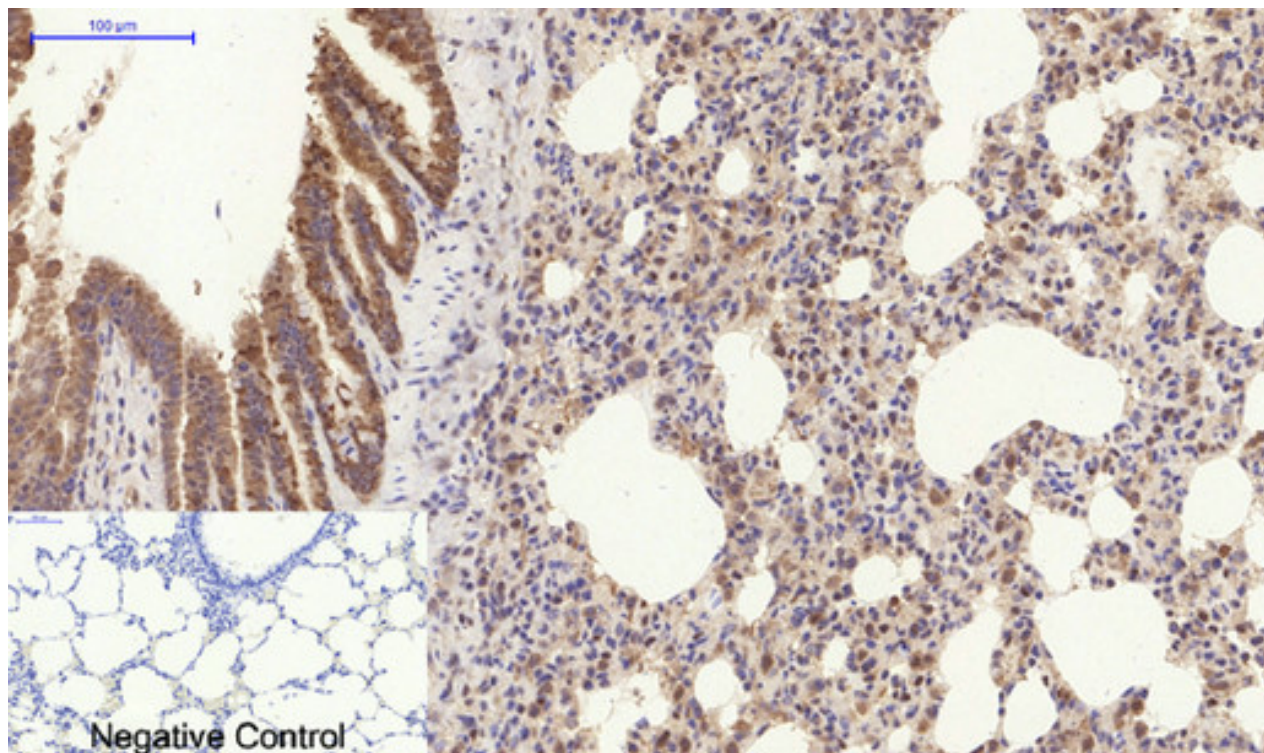
### ORDERS

SALES@GENUINBIOTECH.COM  
FAX: +1-540-855-7041

[WWW.GENUINBIOTECH.COM](http://WWW.GENUINBIOTECH.COM)

**Note:** This product is for research use only.

## Validation Data



Immunohistochemical analysis of paraffin-embedded Rat-lung tissue. COL1A2 antibody was diluted at 1:200 (4°C, overnight). Sodium citrate pH 6.0 was used for antibody retrieval (>98°C, 20min). Secondary antibody was diluted at 1:200 (room temperature, 30min). Negative control was used by secondary antibody only.

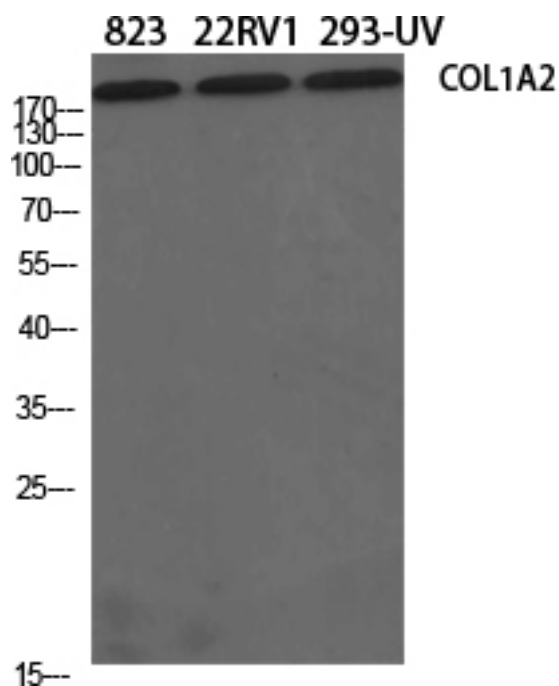
### SUPPORT

SUPPORT@GENUINBIOTECH.COM  
TEL: +1-540-855-7041

### ORDERS

SALES@GENUINBIOTECH.COM  
FAX: +1-540-855-7041

[WWW.GENUINBIOTECH.COM](http://WWW.GENUINBIOTECH.COM)



Western blotting analysis of various cells using COL1A2 antibody (Cat#52827, 1:500).