

## Catalog #: 52844

### Aliases

LAMA5; Laminin Subunit Alpha 5; Laminin-10 Subunit Alpha; Laminin-11 Subunit Alpha; Laminin-15 Subunit Alpha; Laminin Subunit Alpha-5; Laminin Alpha5-Chain; Laminin Alpha-5 Chain ; Laminin, Alpha 5; KIAA0533; KIAA1907; NPHS26; BBDS2

### Background

Gene Name: LAMA5

NCBI Gene Entry: [3911](#)

UniProt Entry: [O15230](#)

### Application Information

Molecular Weight: Predicted, 400 kDa; observed, 400 kDa

Clonality: Rabbit polyclonal antibody

Species Reactivity: Human, mouse

Applications Tested: Western blotting (WB), immunohistochemistry (IHC), immunocytochemistry (IC)

### Immunogen

A synthesized peptide derived from human LAMA5

### Isotype

Rabbit IgG

### Storage Buffer

Supplied in PBS containing 50% glycerol, 0.5% BSA and 0.02% sodium azide.

### Storage

Store at -20 °C for one year.

### Recommended Dilutions

Western Blotting (WB): 1:500-1:2,500

**Note:** This product is for research use only.

### Validation Data

---

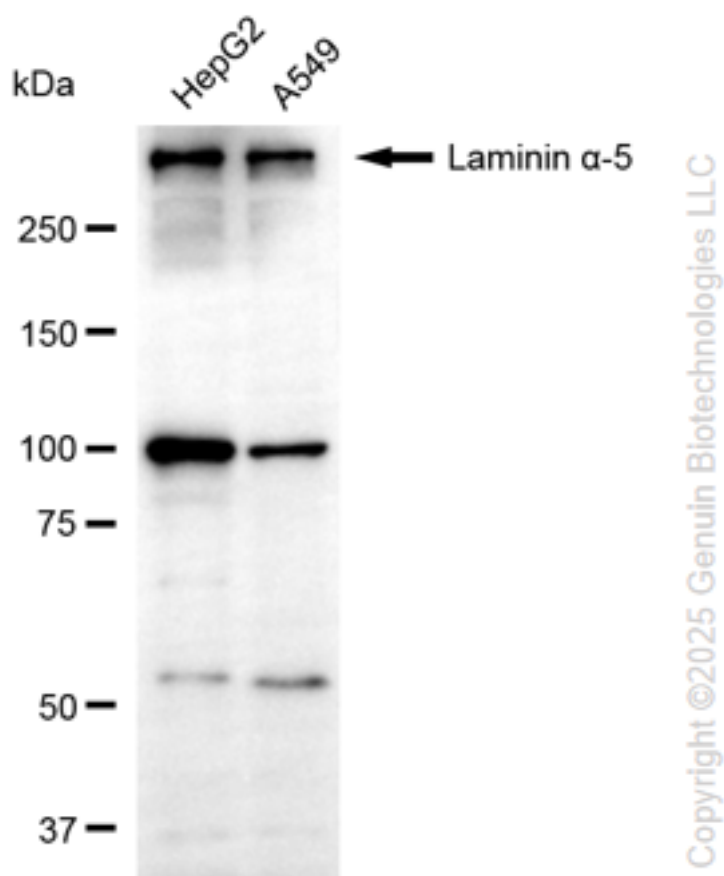
#### SUPPORT

SUPPORT@GENUINBIOTECH.COM  
TEL: +1-540-855-7041

#### ORDERS

SALES@GENUINBIOTECH.COM  
FAX: +1-540-855-7041

[WWW.GENUINBIOTECH.COM](http://WWW.GENUINBIOTECH.COM)



Western blotting analysis using anti-LAMA5 antibody (Cat#52844). Total cell lysates (30 µg) from various cell lines were loaded and separated by SDS-PAGE. The blot was incubated with anti-LAMA5 antibody (Cat#52844, 1:2,500) and HRP-conjugated goat anti-rabbit secondary antibody (Cat#201, 1:20,000) respectively. Image was developed using FeQ™ ECL Substrate Kit (Cat#226).

**SUPPORT**

SUPPORT@GENUINBIOTECH.COM  
TEL: +1-540-855-7041

**ORDERS**

SALES@GENUINBIOTECH.COM  
FAX: +1-540-855-7041

[WWW.GENUINBIOTECH.COM](http://WWW.GENUINBIOTECH.COM)