

## Catalog #: 52845

### Aliases

SMAD7; SMAD Family Member 7; MADH7; MADH8; Mothers Against Decapentaplegic Homolog 7; Mothers Against DPP Homolog 8; MAD Homolog 8; HSMAD7; MAD, Mothers Against Decapentaplegic Homolog 7 (Drosophila); MAD (Mothers Against Decapentaplegic, Drosophila) Homolog 7; Mothers Against Decapentaplegic, Drosophila, Homolog Of, 7; SMAD, Mothers Against DPP Homolog 7 (Drosophila); Mothers Against Decapentaplegic Homolog 8; SMAD, Mothers Against DPP Homolog 7; Mothers Against DPP Homolog 7; MAD Homolog 7; SMAD 7; CRCS3; Smad7

### Background

Gene Name: SMAD7

NCBI Gene Entry: [4092](#)

UniProt Entry: [O15105](#)

### Application Information

Molecular Weight: Predicted, 46 kDa; observed, 50 kDa

Clonality: Rabbit polyclonal antibody

Species Reactivity: Human, mouse, rat

Applications Tested: Western blotting (WB), immunohistochemistry (IHC), immunocytochemistry (IC)

### Immunogen

A synthesized peptide derived from human Smad7

### Isotype

Rabbit IgG

### Storage Buffer

Supplied in 0.01M TBS (pH7.4) containing 50% glycerol, 1% BSA and 0.02% Proclin300.

### Storage

Store at -20 °C for one year.

### Recommended Dilutions

Western Blotting (WB): 1:500-1:2,500

Immunohistochemistry (IHC): 1:100-1:500

---

#### SUPPORT

SUPPORT@GENUINBIOTECH.COM  
TEL: +1-540-855-7041

#### ORDERS

SALES@GENUINBIOTECH.COM  
FAX: +1-540-855-7041

[WWW.GENUINBIOTECH.COM](http://WWW.GENUINBIOTECH.COM)

Immunocytochemistry (IC): 1:100-1:500

**Note:** This product is for research use only.

## Validation Data

---

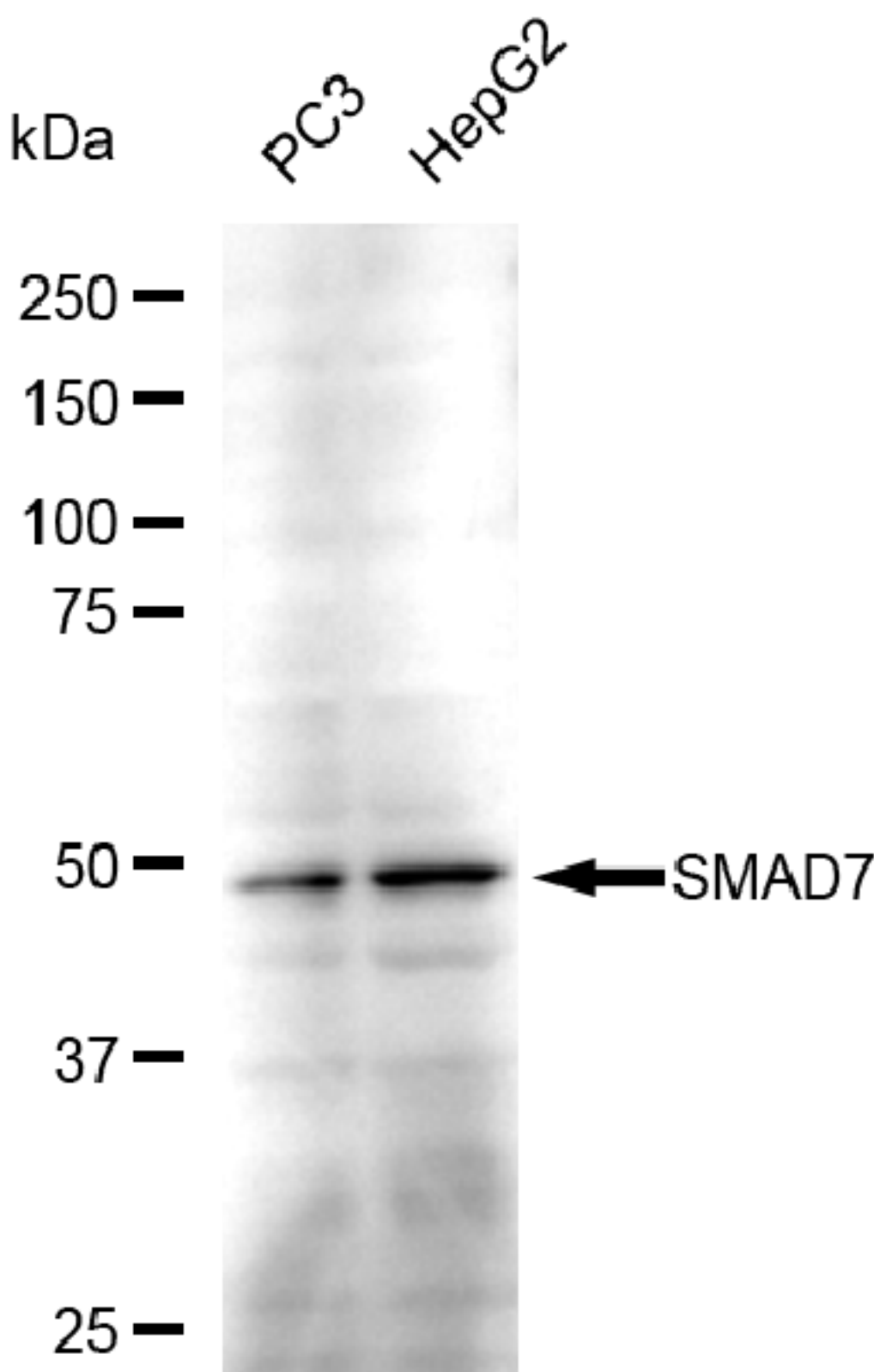
### SUPPORT

SUPPORT@GENUINBIOTECH.COM  
TEL: +1-540-855-7041

### ORDERS

SALES@GENUINBIOTECH.COM  
FAX: +1-540-855-7041

[WWW.GENUINBIOTECH.COM](http://WWW.GENUINBIOTECH.COM)



Copyright ©2025 Genuin Biotechnologies LLC

Western blotting analysis using anti-SMAD7 antibody (Cat#52845). Total lysates (30 µg) were loaded and separated by SDS-PAGE. The blot was incubated with anti-SMAD7 antibody (Cat#52845, 1:2,500) and HRP-conjugated goat anti-rabbit secondary antibody (Cat#201,

**SUPPORT**

SUPPORT@GENUINBIOTECH.COM  
TEL: +1-540-855-7041

**ORDERS**

SALES@GENUINBIOTECH.COM  
FAX: +1-540-855-7041

[WWW.GENUINBIOTECH.COM](http://WWW.GENUINBIOTECH.COM)

1:20,000) respectively. Image was developed using FeQ™ ECL Substrate Kit (Cat#226).