

Catalog #: 52850

Aliases

MST1R; Macrophage Stimulating 1 Receptor; CDw136; CD136; PTK8; RON; S13 Avian Erythroblastosis Oncogene Homolog; Macrophage-Stimulating Protein Receptor; PTK8 Protein Tyrosine Kinase 8; C-Met-Related Tyrosine Kinase; MSP Receptor; EC 2.7.10.1; P185-Ron; SEA; S13 Erythroblastosis (Avian) Oncogene Homolog; S13 Erythroblastosis Oncogene Homolog; Protein-Tyrosine Kinase 8; CD136 Antigen; EC 2.7.10; NPCA3

Background

Gene Name: MST1R

NCBI Gene Entry: [4486](#)

UniProt Entry: [Q04912](#)

Application Information

Molecular Weight: Predicted, 152 kDa; observed, 150 kDa

Clonality: Rabbit polyclonal antibody

Species Reactivity: Human, mouse

Applications Tested: Western blotting (WB), immunohistochemistry (IHC)

Immunogen

A synthesized peptide derived from human MST1R

Isotype

Rabbit IgG

Storage Buffer

Supplied in PBS containing 50% glycerol, 0.5% BSA and 0.02% sodium azide.

Storage

Store at -20 °C for one year.

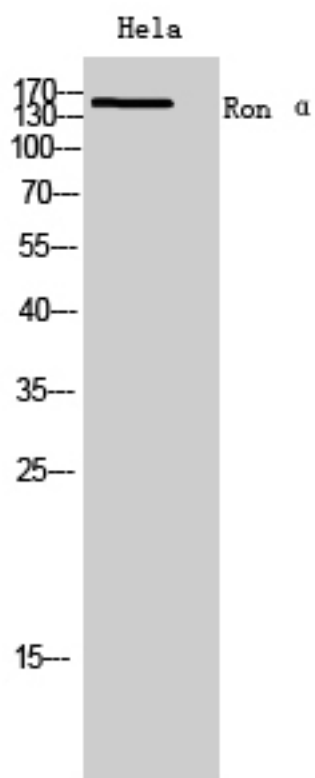
Recommended Dilutions

Western Blotting (WB): 1:500-1:2,000

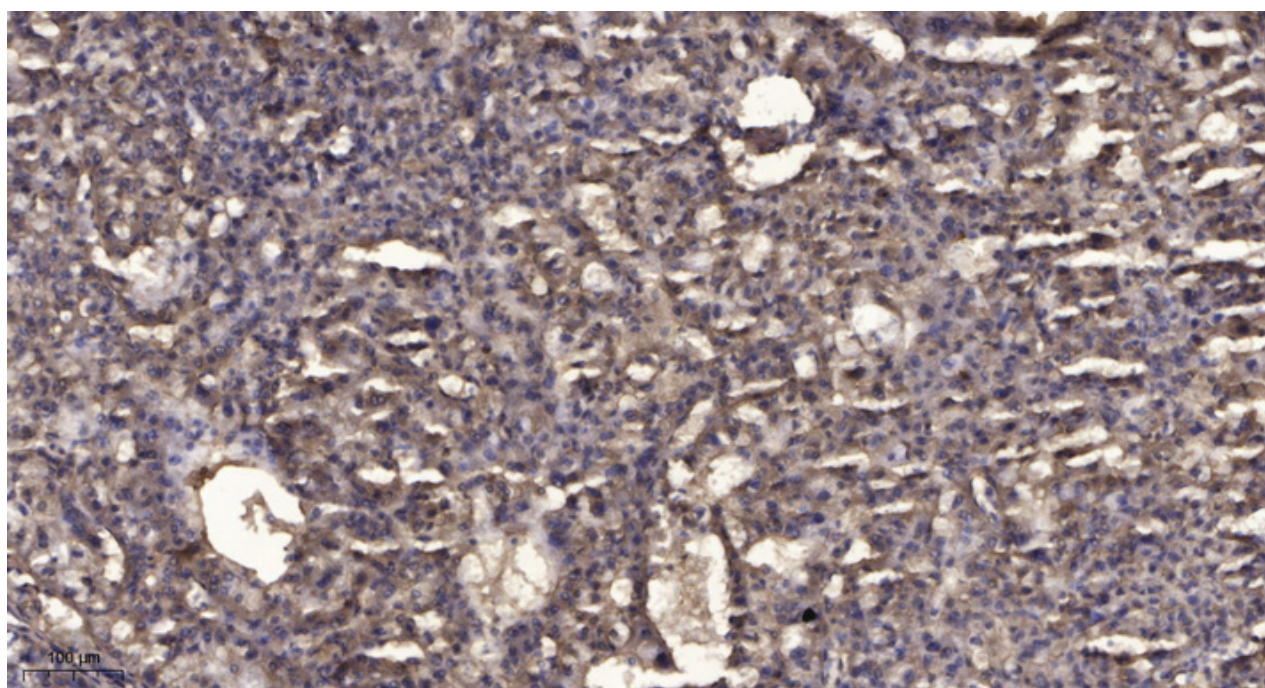
Immunohistochemistry (IHC): 1:50-1:300

Note: This product is for research use only.

Validation Data



Western blotting analysis of HeLa cells using MST1R antibody. Secondary antibody was diluted at 1:20,000.



SUPPORT

SUPPORT@GENUINBIOTECH.COM
TEL: +1-540-855-7041

ORDERS

SALES@GENUINBIOTECH.COM
FAX: +1-540-855-7041

WWW.GENUINBIOTECH.COM

Immunohistochemical analysis of paraffin-embedded human liver cancer. Antibody was diluted at 1:200 (4°C overnight). Tris-EDTA, pH 9.0 was used for antigen retrieval. Secondary antibody was diluted at 1:200 (room temperature, 45min).