

Catalog #: 52851

Aliases

TAGLN; Transgelin; WS3-10; SM22; SM22-Alpha; TAGLN1; SMCC; TGLN; Smooth Muscle Protein 22-Alpha; 22 KDa Actin-Binding Protein; DKFZp686P11128; Epididymis Secretory Sperm Binding Protein; Protein WS3-10

Background

Gene Name: TAGLN

NCBI Gene Entry: [6876](#)

UniProt Entry: [Q01995](#)

Application Information

Molecular Weight: Predicted, 23 kDa; observed, 22 kDa

Clonality: Rabbit polyclonal antibody

Species Reactivity: Human, mouse, rat

Applications Tested: Western blotting (WB)

Immunogen

A synthesized peptide derived from human TAGLN

Isotype

Rabbit IgG

Storage Buffer

Supplied in PBS containing 50% glycerol, 0.5% BSA and 0.02% sodium azide.

Storage

Store at -20 °C for one year.

Recommended Dilutions

Western Blotting (WB): 1:500-1:2,500

Note: This product is for research use only.

Validation Data

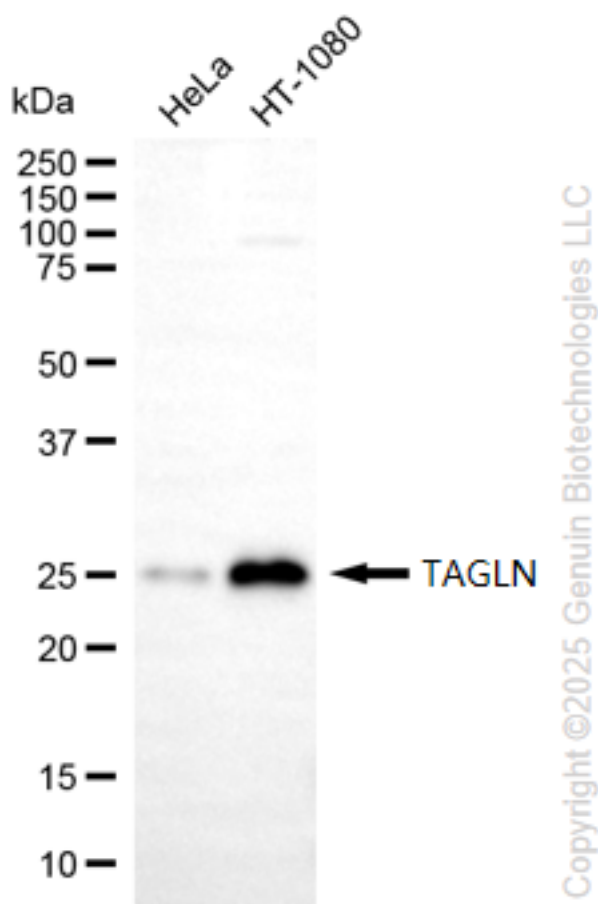
SUPPORT

SUPPORT@GENUINBIOTECH.COM
TEL: +1-540-855-7041

ORDERS

SALES@GENUINBIOTECH.COM
FAX: +1-540-855-7041

WWW.GENUINBIOTECH.COM



Western blotting analysis using anti-TAGLN antibody (Cat#52851). Total cell lysates (30 μ g) from various cell lines were loaded and separated by SDS-PAGE. The blot was incubated with anti-TAGLN antibody (Cat#52851, 1:2,500) and HRP-conjugated goat anti-rabbit secondary antibody (Cat#201, 1:20,000) respectively. Image was developed using FeQ™ ECL Substrate Kit (Cat#226).

SUPPORT

SUPPORT@GENUINBIOTECH.COM
TEL: +1-540-855-7041

ORDERS

SALES@GENUINBIOTECH.COM
FAX: +1-540-855-7041

WWW.GENUINBIOTECH.COM