

Catalog #: 52854

Aliases

GPT2; Glutamic--Pyruvic Transaminase 2; ALT2; Alanine Aminotransferase 2; Glutamate Pyruvate Transaminase 2; Glutamic Pyruvate Transaminase 2; Glutamic--Alanine Transaminase 2; EC 2.6.1.2; GPT 2; Glutamic Pyruvate Transaminase (Alanine Aminotransferase) 2; NEDSPM; MRT49; AAT2

Background

NCBI Gene Entry: [84706](#)

UniProt Entry: [Q8TD30](#)

Application Information

Molecular Weight: Predicted, 58 kDa, observed, 55 kDa

Clonality: Rabbit polyclonal antibody

Clone ID: N/A

Species Reactivity: Human, mouse

Applications Tested: Western blotting (WB)

Immunogen

A synthesized peptide derived from human GPT2

Isotype

Rabbit IgG

Storage Buffer

Supplied in PBS containing 50% glycerol, and 0.02% sodium azide.

Storage

Store at -20 °C for one year.

Recommended Dilutions

Western Blotting (WB): 1:500-1:2,500

Note: This product is for research use only.

Validation Data

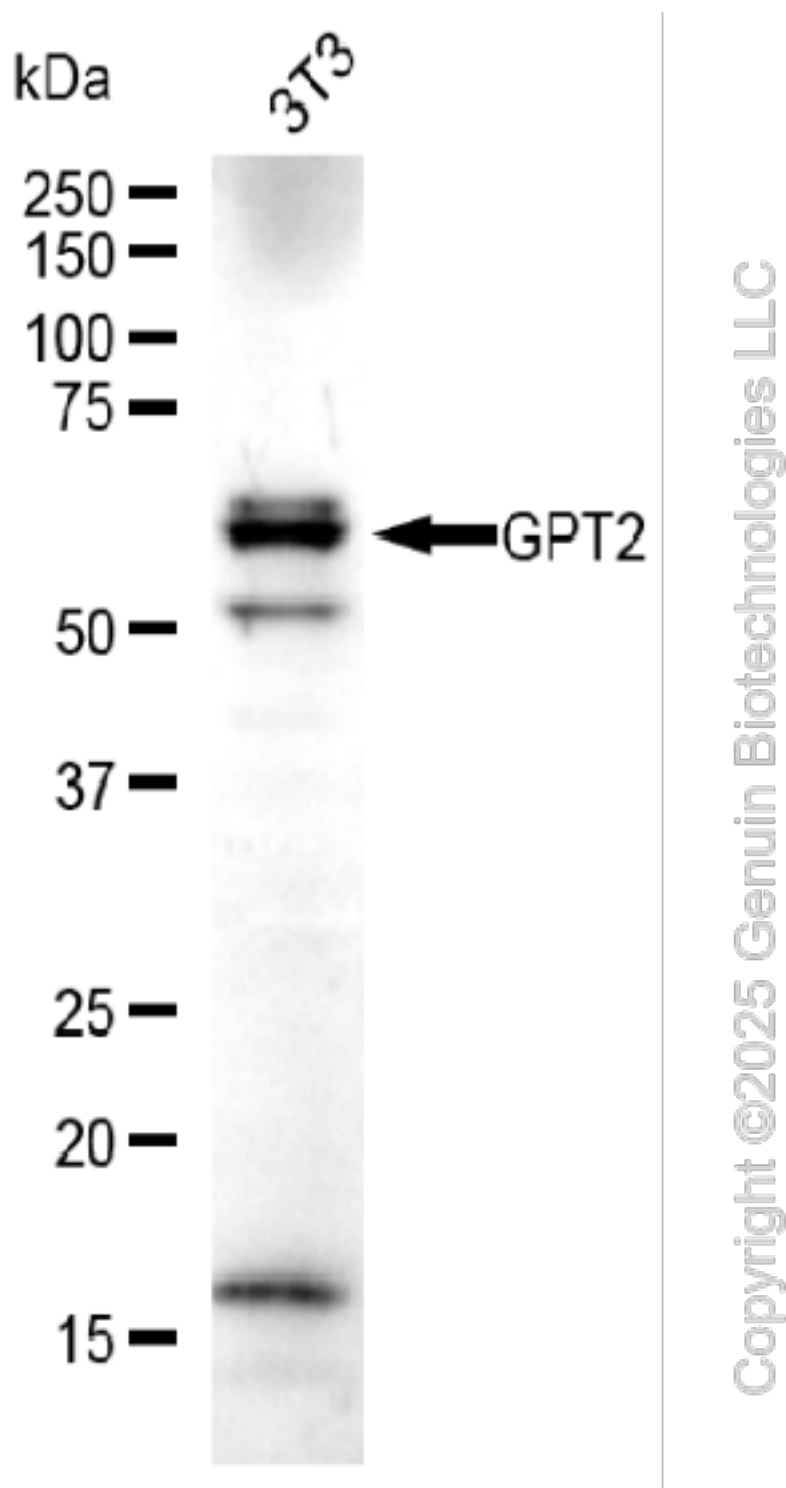
SUPPORT

SUPPORT@GENUINBIOTECH.COM
TEL: +1-540-855-7041

ORDERS

SALES@GENUINBIOTECH.COM
FAX: +1-540-855-7041

WWW.GENUINBIOTECH.COM



Western blotting analysis using anti-GPT2 antibody (Cat#52854). Total cell lysates (30 μ g) from various cell lines were loaded and separated by SDS-PAGE. The blot was incubated with anti-GPT2 antibody (Cat#52854, 1:2,500) and HRP-conjugated goat anti-rabbit secondary antibody (Cat#201, 1:20,000) respectively. Image was developed using FeQ™ ECL Substrate Kit (Cat#226).

SUPPORT

SUPPORT@GENUINBIOTECH.COM
TEL: +1-540-855-7041

ORDERS

SALES@GENUINBIOTECH.COM
FAX: +1-540-855-7041

WWW.GENUINBIOTECH.COM