

Catalog #: 52856

Aliases

PPP1CA; Protein Phosphatase 1 Catalytic Subunit Alpha; PP-1A ; PP1alpha; PPP1A; PP1A; Serine/Threonine-Protein Phosphatase PP1-Alpha Catalytic Subunit; Protein Phosphatase 1, Catalytic Subunit, Alpha Isozyme; EC 3.1.3.16; Serine/Threonine Protein Phosphatase PP1-Alpha 1 Catalytic Subunit; Protein Phosphatase 1, Catalytic Subunit, Alpha Isoform; Testicular Tissue Protein Li 155

Background

NCBI Gene Entry: [5499](#)

UniProt Entry: [P62136](#)

Application Information

Molecular Weight: Predicted, 38 kDa, observed, 38 kDa

Clonality: Mouse monoclonal antibody

Clone ID: 25GB7125

Species Reactivity: Human

Applications Tested: Western blotting (WB), immunohistochemistry-Frozen (IHC-F), immunohistochemistry-Paraffin (IHC-P), immunofluorescence (IF)/immunocytochemistry (IC)

Immunogen

Recombinant protein of human PPP1A

Isotype

Mouse IgG1

Storage Buffer

Supplied in PBS containing 50% glycerol, 0.5% BSA and 0.02% sodium azide.

Storage

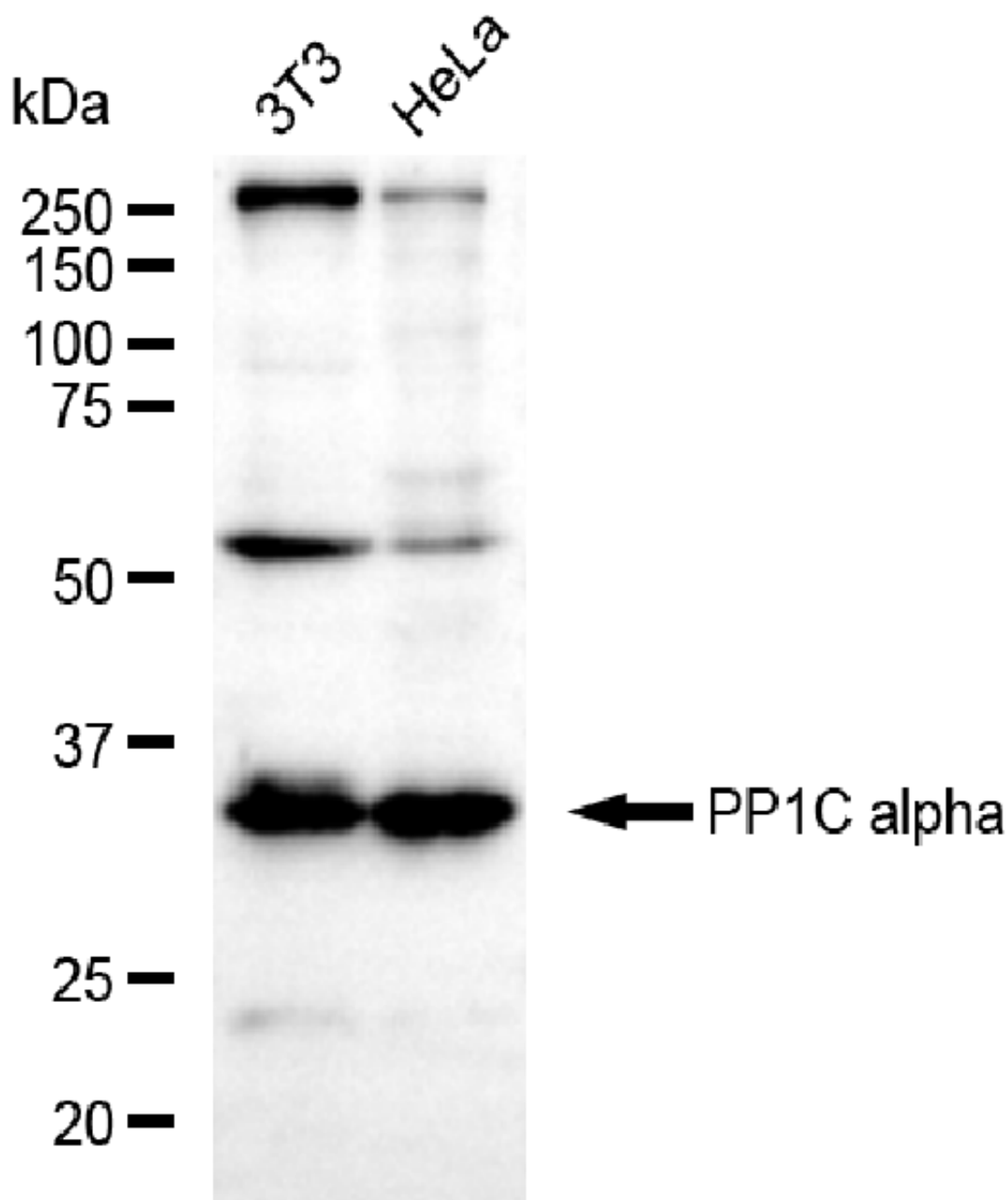
Store at -20 °C for one year.

Recommended Dilutions

Western Blotting (WB): 1:500-1:2,500

Note: This product is for research use only.

Validation Data



Copyright ©2025 Genuin Biotechnologies LLC

Western blotting analysis using anti-PP1C alpha antibody (Cat#52856). Total lysates (30 µg) were loaded and separated by SDS-PAGE. The blot was incubated with anti-PP1C alpha antibody (Cat#52856, 1:2,500) and HRP-conjugated goat anti-mouse secondary antibody (Cat#101, 1:20,000) respectively. Image was developed using FeQ™ ECL Substrate Kit (Cat#226).

SUPPORT

SUPPORT@GENUINBIOTECH.COM
TEL: +1-540-855-7041

ORDERS

SALES@GENUINBIOTECH.COM
FAX: +1-540-855-7041

WWW.GENUINBIOTECH.COM