

Catalog #: 52857

Aliases

GSDMD; Gasdermin D; GSDMDC1; DF5L; Gasdermin Domain-Containing Protein 1; Gasdermin Domain Containing 1; Gasdermin-D; FLJ12150; DFNA5L; FKSG10

Background

Gene Name: GSDMD

NCBI Gene Entry: [79792](#)

UniProt Entry: [P57764](#)

Application Information

Molecular Weight: Predicted, 53 kDa; observed, 36,55 kDa

Clonality: Rabbit polyclonal antibody

Species Reactivity: Human, mouse, rat

Applications Tested: Western blotting (WB), immunohistochemistry (IHC), immunocytochemistry (IC)

Immunogen

A synthesized peptide derived from human GSDMD

Isotype

Rabbit IgG

Storage Buffer

Supplied in PBS containing 50% glycerol, 0.5% BSA and 0.02% sodium azide.

Storage

Store at -20 °C for one year.

Recommended Dilutions

Western Blotting (WB): 1:500-1:2,500

Immunohistochemistry (IHC): 1:50-300

Immunocytochemistry (IC): 1:50-200

Note: This product is for research use only.

Validation Data

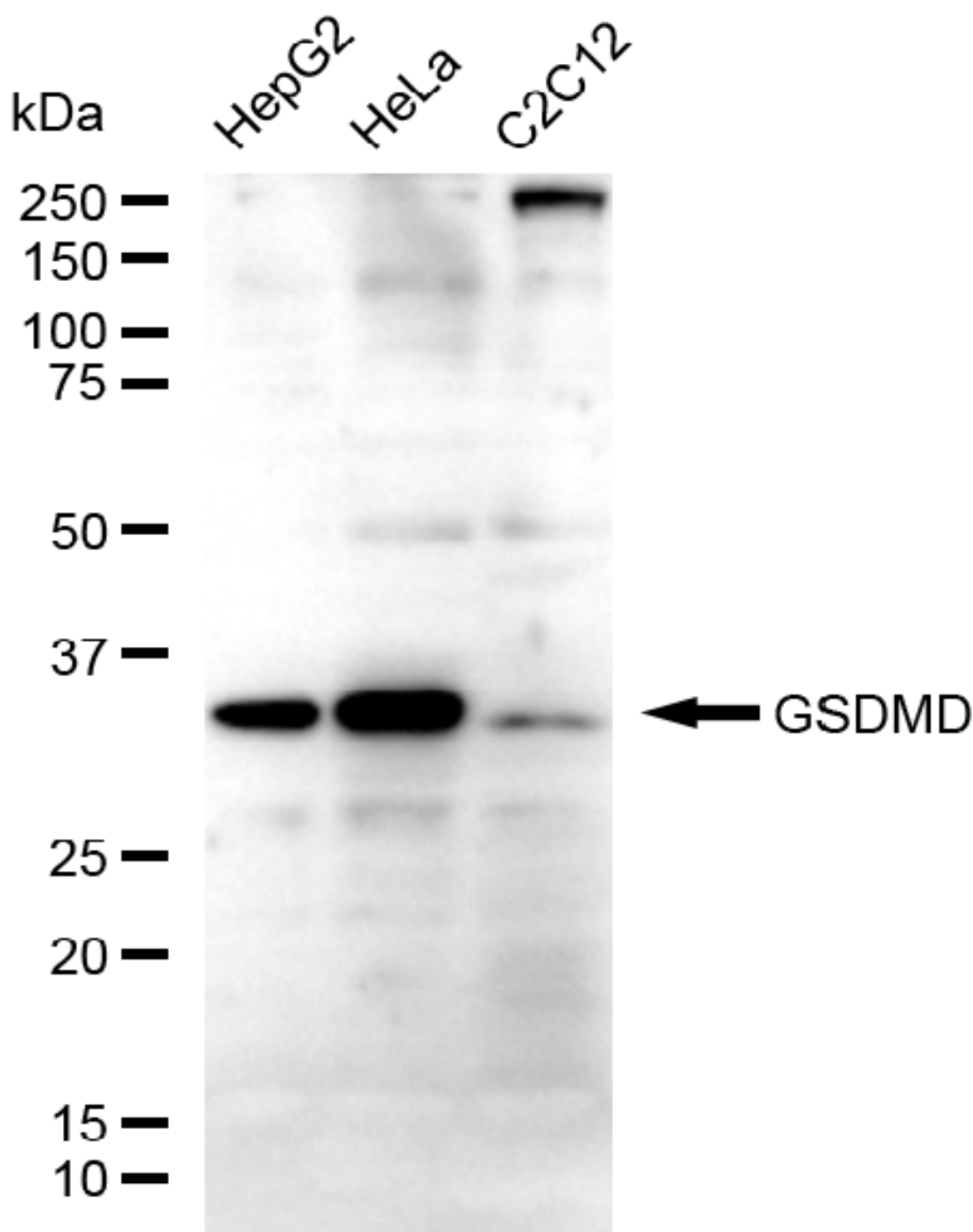
SUPPORT

SUPPORT@GENUINBIOTECH.COM
TEL: +1-540-855-7041

ORDERS

SALES@GENUINBIOTECH.COM
FAX: +1-540-855-7041

WWW.GENUINBIOTECH.COM



Copyright ©2025 Genuin Biotechnologies LLC

Western blotting analysis using anti-GSDMD antibody (Cat#52857). Total lysates (30 μ g) were loaded and separated by SDS-PAGE. The blot was incubated with anti-GSDMD antibody (Cat#52857, 1:2,500) and HRP-conjugated goat anti-rabbit secondary antibody (Cat#201, 1:20,000) respectively. Image was developed using FeQ™ ECL Substrate Kit (Cat#226).

SUPPORT

SUPPORT@GENUINBIOTECH.COM
TEL: +1-540-855-7041

ORDERS

SALES@GENUINBIOTECH.COM
FAX: +1-540-855-7041

WWW.GENUINBIOTECH.COM