

**Catalog #: 52858**

## Aliases

IRF8; Interferon Regulatory Factor 8; IRF-8; ICSBP; ICSBP1; Interferon Consensus Sequence Binding Protein 1; H-ICSBP; Interferon Consensus Sequence-Binding Protein; IMD32A; IMD32B

## Background

Gene Name: IRF8

NCBI Gene Entry: [3394](#)

UniProt Entry: [Q02556](#)

## Application Information

Molecular Weight: Predicted, 47 kDa; observed, 48 kDa

Clonality: Rabbit polyclonal antibody

Species Reactivity: Human, mouse

Applications Tested: Western blotting (WB)

## Immunogen

A synthesized peptide derived from human IRF8

## Isotype

Rabbit IgG

## Storage Buffer

Supplied in PBS containing 50% glycerol, 0.5% BSA and 0.02% sodium azide.

## Storage

Store at -20 °C for one year.

## Recommended Dilutions

Western Blotting (WB): 1:500-1:2,500

**Note:** This product is for research use only.

## Validation Data

---

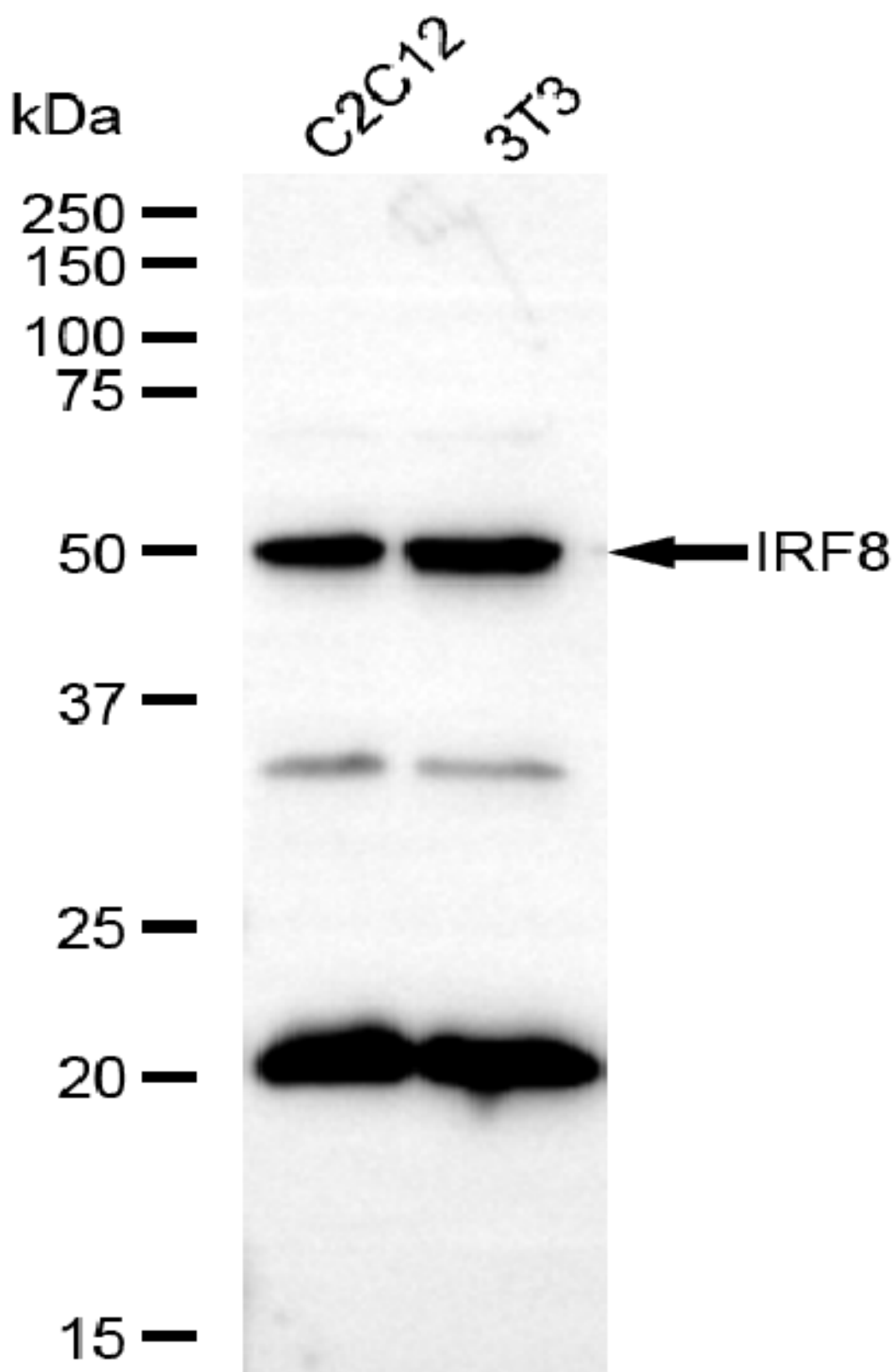
### SUPPORT

SUPPORT@GENUINBIOTECH.COM  
TEL: +1-540-855-7041

### ORDERS

SALES@GENUINBIOTECH.COM  
FAX: +1-540-855-7041

[WWW.GENUINBIOTECH.COM](http://WWW.GENUINBIOTECH.COM)



Copyright ©2025 Genuin Biotechnologies LLC

Western blotting analysis using anti-IRF8 antibody (Cat#52858). Total lysates (30 µg) were loaded and separated by SDS-PAGE. The blot was incubated with anti-IRF8 antibody (Cat#52858,

**SUPPORT**

SUPPORT@GENUINBIOTECH.COM  
TEL: +1-540-855-7041

**ORDERS**

SALES@GENUINBIOTECH.COM  
FAX: +1-540-855-7041

[WWW.GENUINBIOTECH.COM](http://WWW.GENUINBIOTECH.COM)

1:2,500) and HRP-conjugated goat anti-rabbit secondary antibody (Cat#201, 1:20,000) respectively. Image was developed using FeQ™ ECL Substrate Kit (Cat#226).