

Catalog #: 5286

Aliases

PPIL2; Peptidylprolyl Isomerase Like 2; CYC4; Cyp-60; UBOX7; Probable Inactive Peptidyl-Prolyl Cis-Trans Isomerase-Like 2; Peptidylprolyl Isomerase (Cyclophilin)-Like 2; RING-Type E3 Ubiquitin-Protein Ligase PPIL2; Peptidyl-Prolyl Cis-Trans Isomerase-Like 2; U-Box Domain Containing 7; Cyclophilin-60; Rotamase PPIL2; HCyP-60; PPIase; RING-Type E3 Ubiquitin Transferase Isomerase-Like 2; Peptidylprolyl Cis-Trans Isomerase; Cyclophilin-Like Protein CyP-60; Cyclophilin-Like Protein Cyp-60; Cyclophilin, 60kDa; EC 2.3.2.27; EC 5.2.1.8; CYP60; Cyp60

Background

Gene Name: PPIL2

NCBI Gene Entry: [23759](#)

UniProt Entry: [Q13356](#)

Application Information

Molecular Weight: Predicted, 59 kDa; observed, 62 kDa

Clonality: Mouse oligoclonal antibody

Species Reactivity: Human, mouse, rat

Applications Tested: Western blotting (WB), flow cytometry (FCM), immunocytochemistry (IC)

Immunogen

Recombinant protein of human PPIL2

Isotype

Mouse IgG

Storage Buffer

Supplied in PBS (pH 7.4) containing 50% glycerol, and 0.02% sodium azide.

Storage

Store at -20 °C for one year.

Recommended Dilutions

Western Blotting (WB): 1:200-1:1,000

Flow Cytometry (FCM): 1:2,000

Immunocytochemistry (IC): 1:100-1:1,000

SUPPORT

SUPPORT@GENUINBIOTECH.COM
TEL: +1-540-855-7041

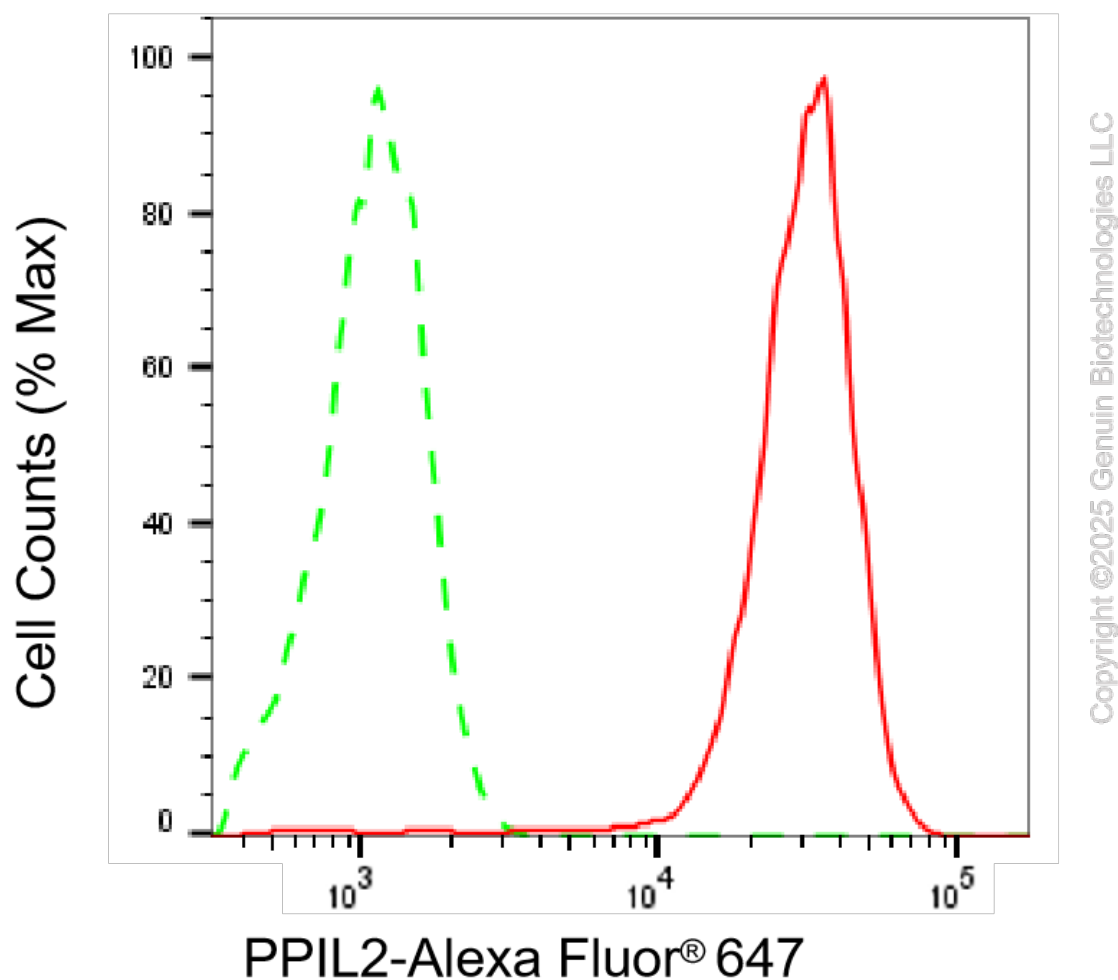
ORDERS

SALES@GENUINBIOTECH.COM
FAX: +1-540-855-7041

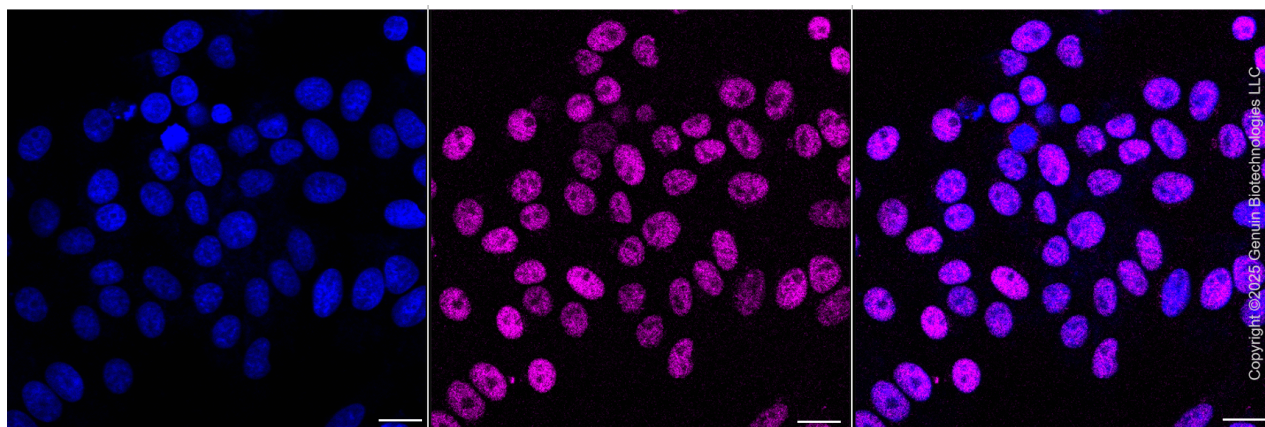
WWW.GENUINBIOTECH.COM

Note: This product is for research use only.

Validation Data



Flow cytometric analysis of PPIL2 expression in HepG2 cells using anti-PPIL2 antibody (Cat#5286, 1:2,000). Green, isotype control; red, PPIL2.



SUPPORT

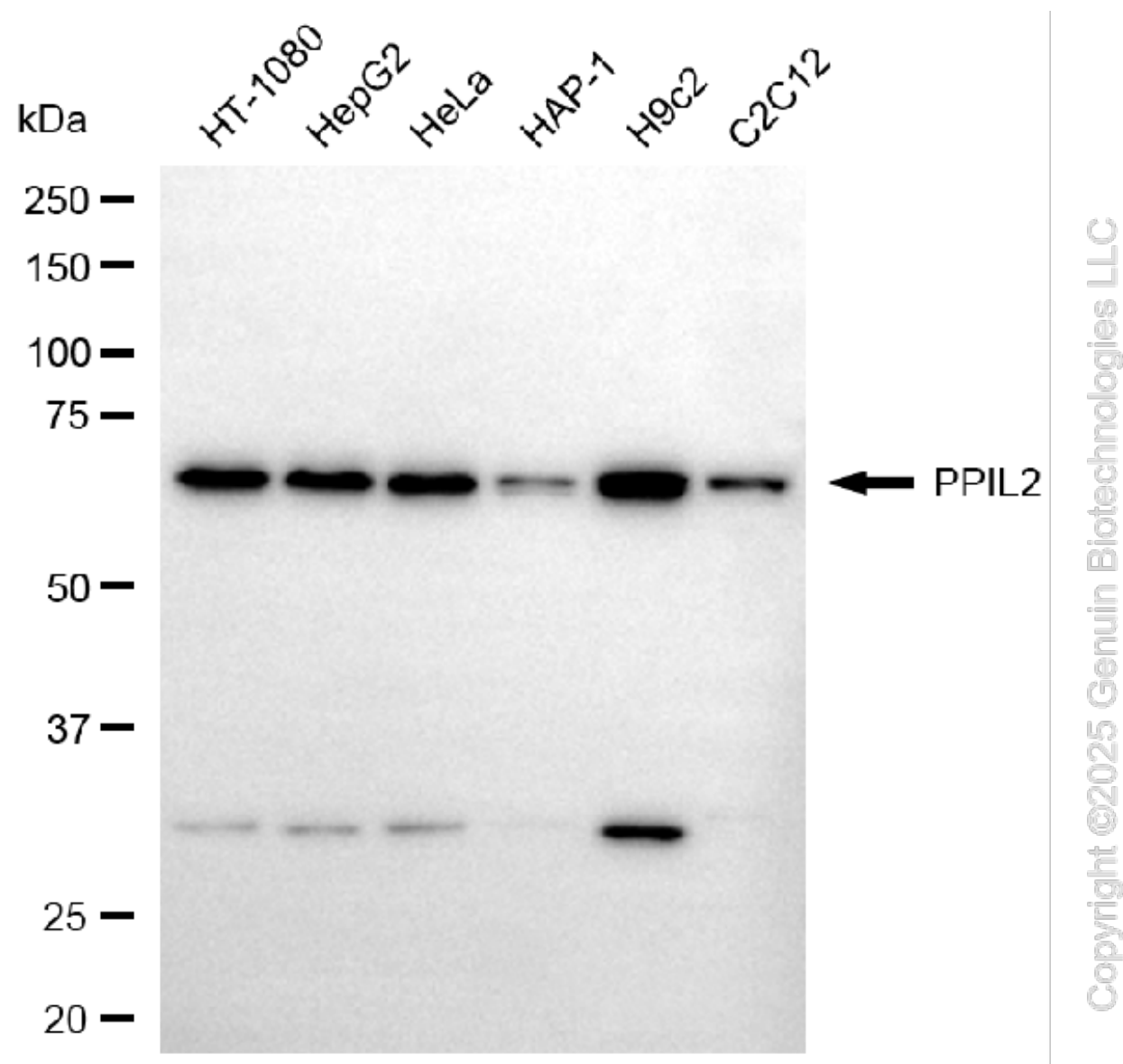
SUPPORT@GENUINBIOTECH.COM
TEL: +1-540-855-7041

ORDERS

SALES@GENUINBIOTECH.COM
FAX: +1-540-855-7041

WWW.GENUINBIOTECH.COM

Immunocytochemical staining of HepG2 cells with anti-PPIL2 antibody (Cat#5286, 1:1,000). Nuclei were stained blue with DAPI; PPIL2 was stained magenta with Alexa Fluor® 647. Images were taken using Leica stellaris 5. Protein abundance based on laser Intensity and smart gain: Medium. Scale bar, 20 µm.



Western blotting analysis using anti-PPIL2 antibody (Cat#5286). Total cell lysates (30 µg) from various cell lines were loaded and separated by SDS-PAGE. The blot was incubated with anti-PPIL2 antibody (Cat#5286, 1:1,000) and HRP-conjugated goat anti-mouse secondary antibody (Cat#101, 1:20,000) respectively. Image was developed using FeQ™ ECL Substrate Kit (Cat#226).