

## Catalog #: 52860

### Aliases

EGLN1; Egl-9 Family Hypoxia Inducible Factor 1; PHD2; C1orf12; ZMYND6; HIFPH2; SM-20; Prolyl Hydroxylase Domain-Containing Protein 2; Hypoxia-Inducible Factor Prolyl Hydroxylase 2; HIF-Prolyl Hydroxylase 2; Egl Nine Homolog 1; HIF-PH2; HPH-2; Zinc Finger MYND Domain-Containing Protein 6; Egl-9 Family Hypoxia-Inducible Factor 1; Egl Nine Homolog 1 (C. Elegans); EGL Nine (C.Elegans) Homolog 1; HIF Prolyl Hydroxylase 2; Egl Nine-Like Protein 1; EC 1.14.11.29; EC 1.14.11; ECYT3; HALAH; HPH2; SM20

### Background

Gene Name: EGLN1

NCBI Gene Entry: [54583](#)

UniProt Entry: [Q9GZT9](#)

### Application Information

Molecular Weight: Predicted, 47 kDa; observed, 47 kDa

Clonality: Rabbit polyclonal antibody

Species Reactivity: Human, mouse, rat

Applications Tested: Western blotting (WB)

### Immunogen

A synthesized peptide derived from human EGLN1

### Isotype

Rabbit IgG

### Storage Buffer

Supplied in PBS containing 50% glycerol, 0.5% BSA and 0.02% sodium azide.

### Storage

Store at -20 °C for one year.

### Recommended Dilutions

Western Blotting (WB): 1:500-1:2,500

**Note:** This product is for research use only.

---

#### SUPPORT

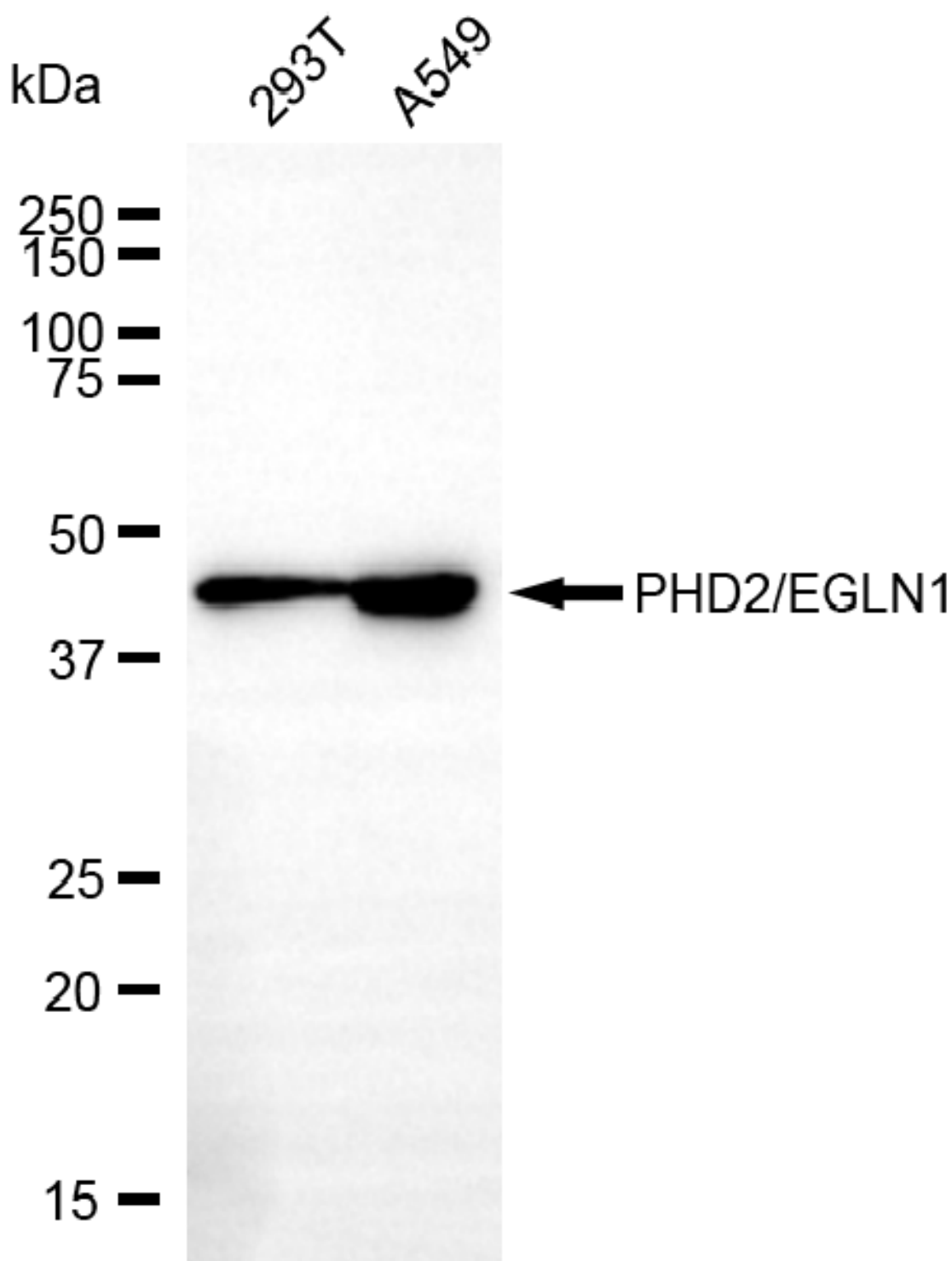
SUPPORT@GENUINBIOTECH.COM  
TEL: +1-540-855-7041

#### ORDERS

SALES@GENUINBIOTECH.COM  
FAX: +1-540-855-7041

[WWW.GENUINBIOTECH.COM](http://WWW.GENUINBIOTECH.COM)

## Validation Data



Copyright ©2025 Genuin Biotechnologies LLC

Western blotting analysis using anti-EGLN1 antibody (Cat#52860). Total lysates (30 µg) were loaded and separated by SDS-PAGE. The blot was incubated with anti-EGLN1 antibody (Cat#52860, 1:2,500) and HRP-conjugated goat anti-rabbit secondary antibody (Cat#201,

## SUPPORT

SUPPORT@GENUINBIOTECH.COM  
TEL: +1-540-855-7041

## ORDERS

SALES@GENUINBIOTECH.COM  
FAX: +1-540-855-7041

WWW.GENUINBIOTECH.COM

1:20,000) respectively. Image was developed using FeQ™ ECL Substrate Kit (Cat#226).