

Catalog #: 52861

Aliases

IGSF8; Immunoglobulin Superfamily Member 8; CD81P3; EWI2; PGRL; CD316; Keratinocytes-Associated Transmembrane Protein 4; Glu-Trp-Ile EWI Motif-Containing Protein 2; Prostaglandin Regulatory-Like Protein; CD81 Partner 3; LIR-D1; EWI-2; KCT-4; Immunoglobulin Superfamily, Member 8; CD316 Antigen; IgSF8; KCT4

Background

Gene Name: IGSF8

NCBI Gene Entry: [93185](#)

UniProt Entry: [Q969P0](#)

Application Information

Molecular Weight: Predicted, 65 kDa; observed, 65 kDa

Clonality: Rabbit polyclonal antibody

Species Reactivity: Human, mouse

Applications Tested: Western blotting (WB), immunohistochemistry (IHC)

Immunogen

A synthesized peptide derived from human CD316

Isotype

Rabbit IgG

Storage Buffer

Supplied in PBS (pH 7.3) containing 30% glycerol, and 0.01% sodium azide.

Storage

Store at -20 °C for one year.

Recommended Dilutions

Western Blotting (WB): 1:500-1:2,500

Immunohistochemistry (IHC): 1:50-100

Note: This product is for research use only.

Validation Data

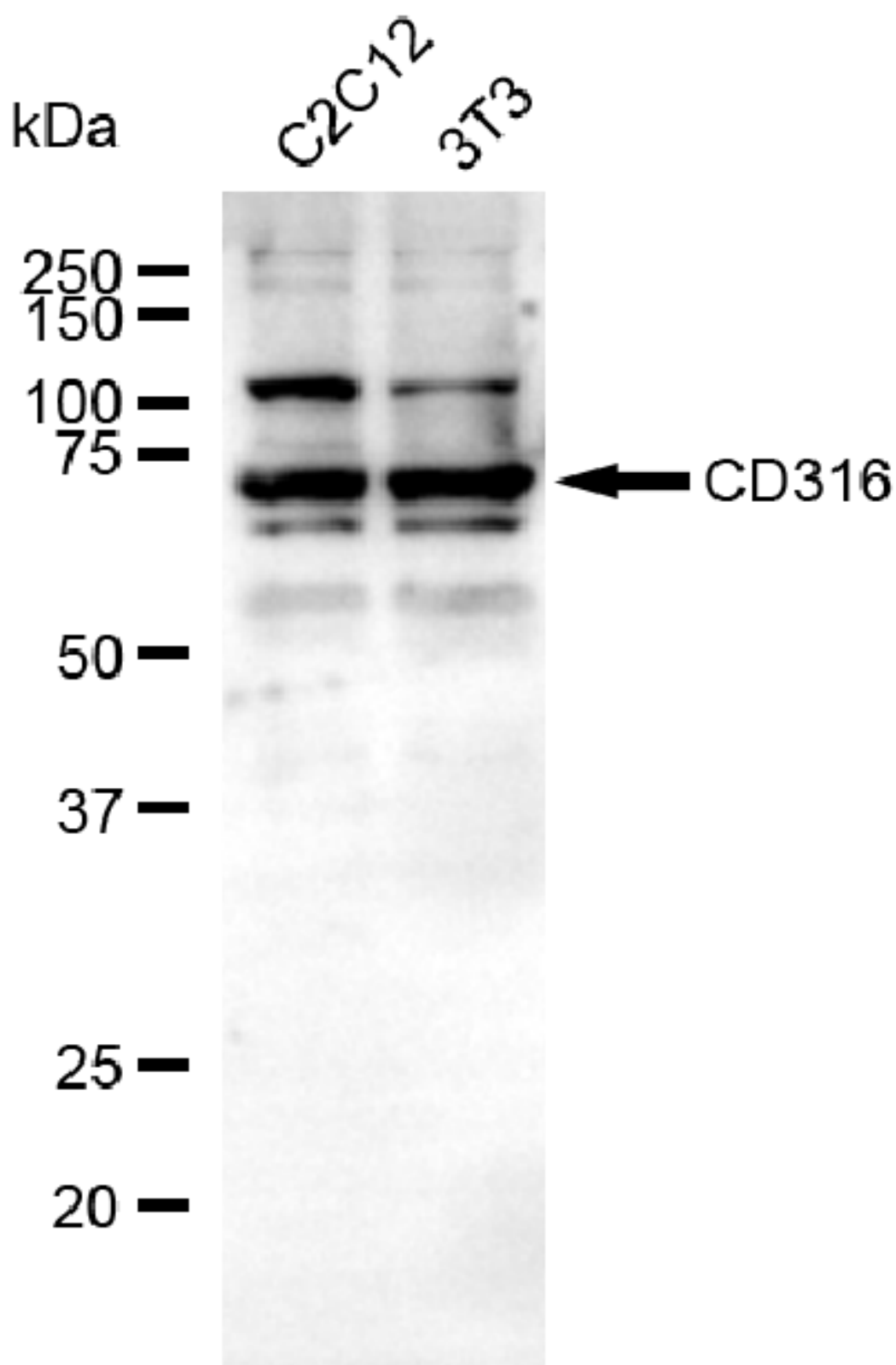
SUPPORT

SUPPORT@GENUINBIOTECH.COM
TEL: +1-540-855-7041

ORDERS

SALES@GENUINBIOTECH.COM
FAX: +1-540-855-7041

WWW.GENUINBIOTECH.COM



Copyright ©2025 Genuin Biotechnologies LLC

Western blotting analysis using anti-CD316 antibody (Cat#52861). Total lysates (30 µg) were loaded and separated by SDS-PAGE. The blot was incubated with anti-CD316 antibody

SUPPORT

SUPPORT@GENUINBIOTECH.COM
TEL: +1-540-855-7041

ORDERS

SALES@GENUINBIOTECH.COM
FAX: +1-540-855-7041

WWW.GENUINBIOTECH.COM

(Cat#52861, 1:2,500) and HRP-conjugated goat anti-rabbit secondary antibody (Cat#201, 1:20,000) respectively. Image was developed using FeQ™ ECL Substrate Kit (Cat#226).