

Catalog #: 5287

Aliases

ICA1; Islet Cell Autoantigen 1; ICAp69; ICA69; Islet Cell Autoantigen 1, 69kDa; 69 KDa Islet Cell Autoantigen; Islet Cell Autoantigen P69; P69; Diabetes Mellitus Type I Autoantigen; Testicular Tissue Protein Li 162; Islet Cell Autoantigen 1 (69kD)

Background

Gene Name: ICA1

NCBI Gene Entry: [3382](#)

UniProt Entry: [Q05084](#)

Application Information

Molecular Weight: Predicted, 55 kDa; observed, 62 kDa

Clonality: Mouse oligoclonal antibody

Species Reactivity: Human, mouse

Applications Tested: Western blotting (WB)

Immunogen

Recombinant protein of human ICA1

Isotype

Mouse IgG

Storage Buffer

Supplied in PBS (pH 7.4) containing 50% glycerol, and 0.02% sodium azide.

Storage

Store at -20 °C for one year.

Recommended Dilutions

Western Blotting (WB): 1:400-1:2,000

Note: This product is for research use only.

Validation Data

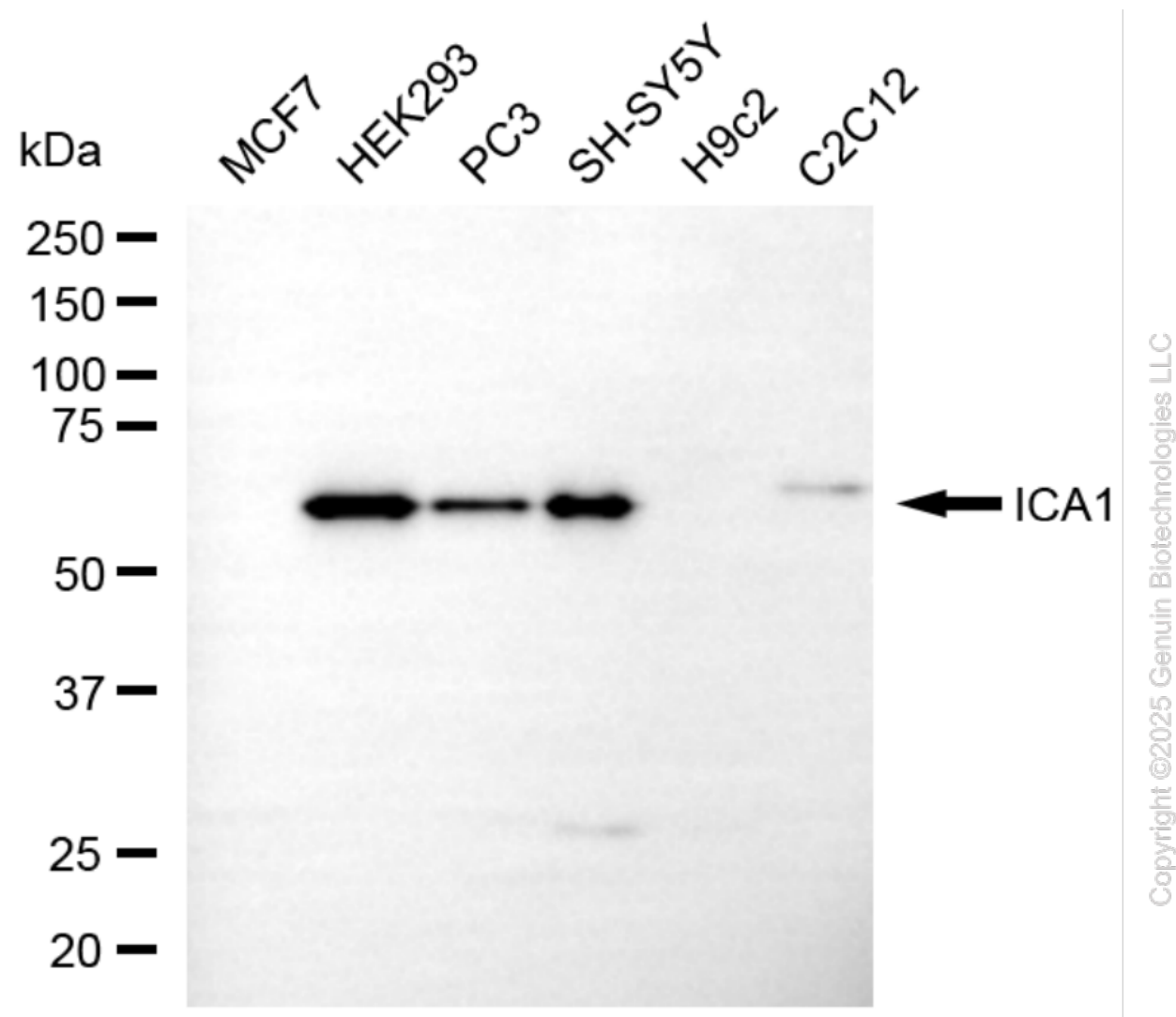
SUPPORT

SUPPORT@GENUINBIOTECH.COM
TEL: +1-540-855-7041

ORDERS

SALES@GENUINBIOTECH.COM
FAX: +1-540-855-7041

WWW.GENUINBIOTECH.COM



Western blotting analysis using anti-ICA1 antibody (Cat#5287). Total cell lysates (30 μ g) from various cell lines were loaded and separated by SDS-PAGE. The blot was incubated with anti-ICA1 antibody (Cat#5287, 1:2,000) and HRP-conjugated goat anti-mouse secondary antibody (Cat#101, 1:20,000) respectively. Image was developed using FeQ™ ECL Substrate Kit (Cat#226).