

Catalog #: 5288

Aliases

SNRPB; Small Nuclear Ribonucleoprotein Polypeptides B And B1; Sm-B/B'; SnRNP-B; COD; SmB/SmB'; SNRPB1; Small Nuclear Ribonucleoprotein-Associated Proteins B And B'; Sm Protein B/B'; SmB/B'; Small Nuclear Ribonucleoprotein Polypeptides B And B'; Small Nuclear Ribonucleoprotein Polypeptide B; B Polypeptide Of Sm Protein; Sm-B/Sm-B'; CCMS

Background

Gene Name: SNRPB

NCBI Gene Entry: [6628](#)

UniProt Entry: [P14678](#)

Application Information

Molecular Weight: Predicted, 25 kDa; observed, 25 kDa

Clonality: Mouse oligoclonal antibody

Species Reactivity: Human, mouse, rat

Applications Tested: Western blotting (WB), flow cytometry (FCM), immunocytochemistry (IC)

Immunogen

Recombinant protein of human SNRPB

Isotype

Mouse IgG

Storage Buffer

Supplied in PBS (pH 7.4) containing 50% glycerol, and 0.02% sodium azide.

Storage

Store at -20 °C for one year.

Recommended Dilutions

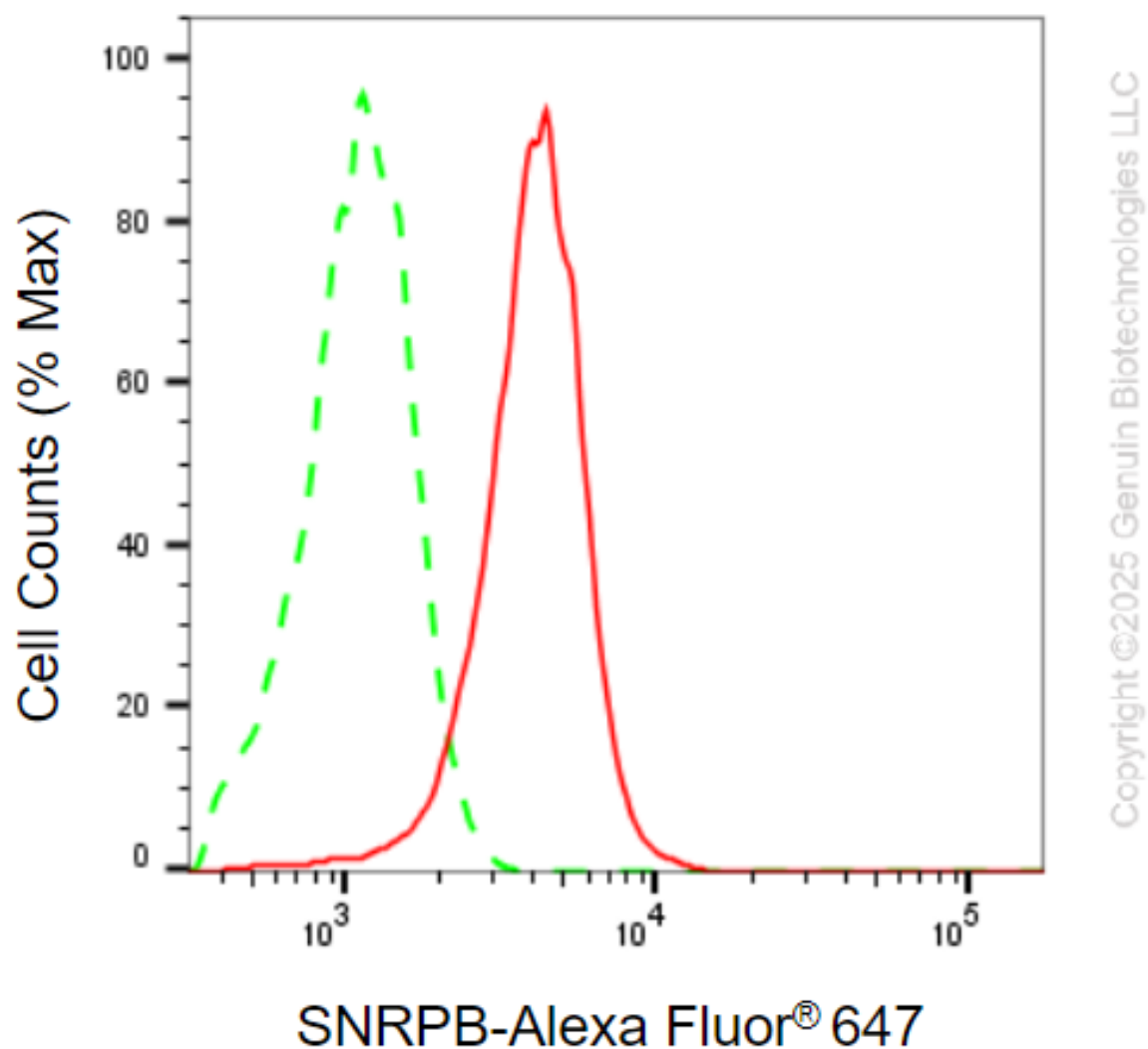
Western Blotting (WB): 1:400-1:2,000

Flow Cytometry (FCM): 1:2,000

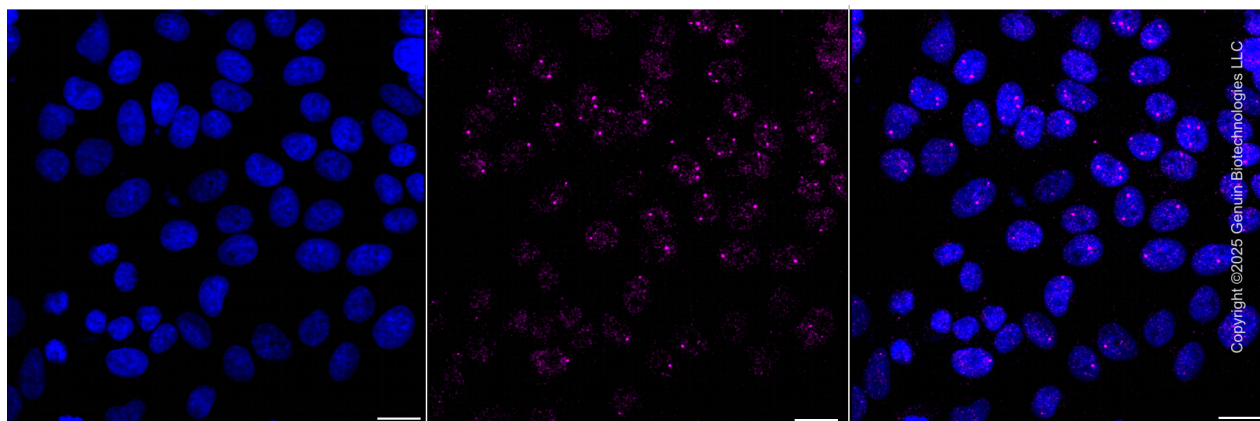
Immunocytochemistry (IC): 1:100-1:1,000

Note: This product is for research use only.

Validation Data



Flow cytometric analysis of SNRPB expression in HepG2 cells using anti-SNRPB antibody (Cat#5288, 1:2,000). Green, isotype control; red, SNRPB.



SUPPORT

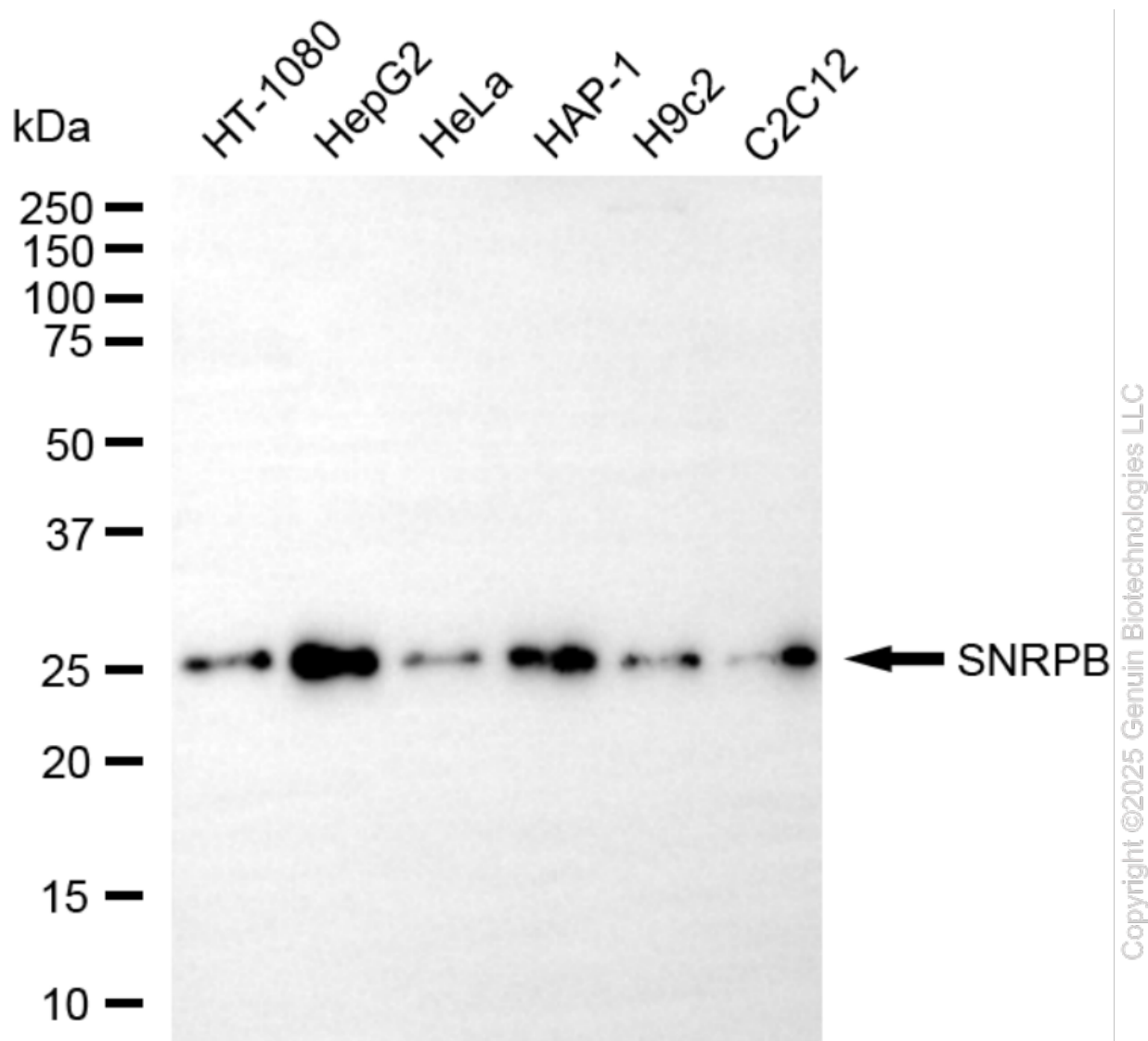
SUPPORT@GENUINBIOTECH.COM
TEL: +1-540-855-7041

ORDERS

SALES@GENUINBIOTECH.COM
FAX: +1-540-855-7041

WWW.GENUINBIOTECH.COM

Immunocytochemical staining of HepG2 cells with anti-SNRPB antibody (Cat#5288, 1:1,000) . Nuclei were stained blue with DAPI; SNRPB was stained magenta with Alexa Fluor® 647. Images were taken using Leica stellaris 5. Protein abundance based on laser Intensity and smart gain:Medium . Scale bar, 20 μ m.



Western blotting analysis using anti-SNRPB antibody (Cat#5288). Total cell lysates (30 μ g) from various cell lines were loaded and separated by SDS-PAGE. The blot was incubated with anti-SNRPB antibody (Cat#5288, 1:2,000) and HRP-conjugated goat anti-mouse secondary antibody (Cat#101, 1:20,000) respectively. Image was developed using NaQ™ ECL Substrate Kit (Cat#716).